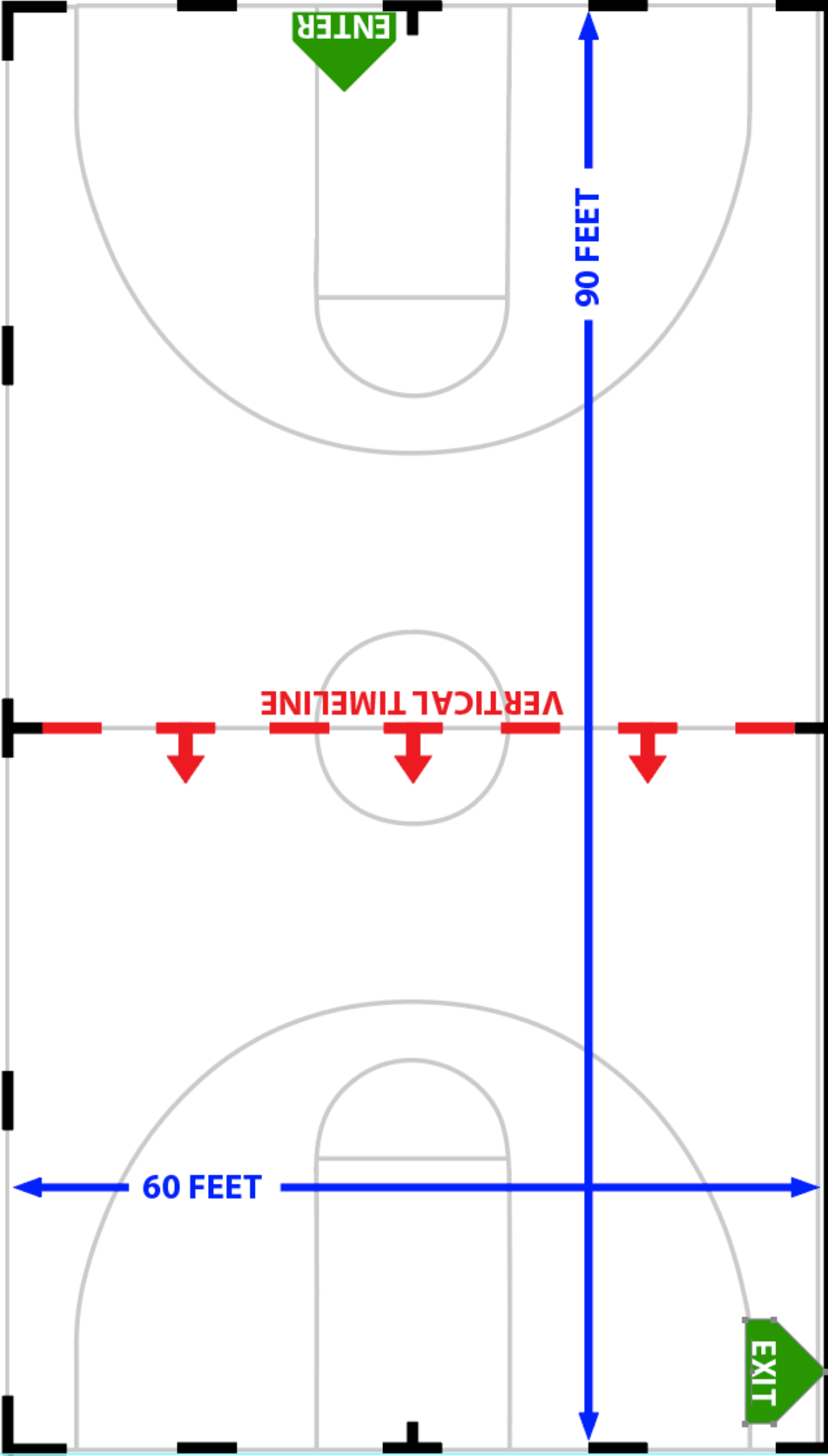


PLEASE NOTE: All CWEA contest sites must have a minimum of 70'x100' to accommodate a "safety zone" of 5' from any spectator seating. If no spectators are seated on the left and right sides, then the safety zone will be eliminated on the left and right sides of the competition area and could extend to a maximum of 78'x106'. The "competition area" at this event is shown below. All performing groups must be prepared to perform in that area. Floor tarps may not extend into the safety zones per rules found in the WGI Adjudication Manual and Rulebook.



5-FOOT SAFETY ZONE

SPECTATOR SEATING