

# 2018 CSBC Semi Finals 2A/5A at Fred Kelly Stadium

November 10, 2018

Dear Directors,

## Welcome to the 2018 CSBC Semi Finals 2A/5A at Fred Kelly Stadium!

Please take time to familiarize yourself with the following information.

If you have further questions, please call me at (714) 628-5317.

**Emergency Phone:** There will be an emergency cellular phone for calls during the day.  
Prelims Co-Chairs: 714-869-8062 (Lisa Garrett), 714-423-2122 (Agnes Tu)

Please note that the information provided in this packet is supplemental to that in the CSBC 2018 Field Tournament Rules and CSBC Field Conditions Policy found online at <http://csbc.compsuite.io/downloads>

### 1. PARKING (See Map)

- Spectator Parking: Staff Parking & Softball Lots, Prospect Elementary, and Grijalva Park
- Handicapped Parking: VIP Lot
- Bus Parking: Main Lot (2nd driveway on the right heading east on Spring St)

### 2. GROUP ARRIVAL and CHECK-IN

Please plan to arrive with plenty of time to park, unload, and prepare for your performance. Upon your arrival, you will meet your student guides (see section 6 below), and we will provide wristbands for students, staff, chaperones and essential parent volunteers. Please be sure to check your packet upon arrival to see if any changes or updates have been made to the performance schedule. One wristband will be given to each band for every 10 students performing. After each group completes its performance, all parents must have a wristband or pay admission to re-enter the stadium.

### 3. ADMISSION

Performers: Free  
General: \$15.00  
Seniors (65+) & Students: \$10.00 (with ID)

### 4. CHANGING AREAS / RESTROOMS

Restrooms are available near the 200 and the 500 building. Uniform changing must be done in your buses. PLEASE DO NOT ALLOW YOUR STUDENTS TO USE THE RESTROOM AREAS FOR CHANGING IN OR OUT OF THEIR UNIFORMS.

### 5. WARM-UP AREAS

There are four warm-up areas. Your designated warm-up area will be clearly marked and your student guides will assist you in locating that area. Pit sections may use the bus parking lot for warm-up. Your 45-minute warm-up time will begin 55 minutes prior to your performance. We're not going to force you to be at the staging gate a full 10 minutes prior to your performance, but anyone responsible for delaying Prelims will receive the maximum timing penalty assessed to your final score. As always, keep an eye on your watch.

### ONLY PITS MAY PLAY IN THE BUS PARKING LOT!!

Auxiliary units may use the tennis courts and any portion of the athletic fields for their warm-up. In the evening for better lighting, they may use the tennis courts near the stadium or the amphitheater east of warm-up area D.

### 6. GROUP GUIDES

Each group will be assigned two EMHS students who will remain with that group.

They will answer any questions you might have on the day of the performance as well as help to keep a line of communication open between you and the show director. It is your responsibility, as always, to keep an eye on your times.

### 7. FOOD - please read this

We do not allow preparation of large amounts of food on the EMHS campus. This is per school district policy and will be enforced during Prelims. I do not have the authority to change this policy.

Delicious food will be available at very reasonable prices at the concession stands. We will offer a variety of food, drinks, and snacks that are sure to please the most finicky palate.

We are proud to host the 2018 CSBC Semi Finals 2A/5A, and work hard to bring a consistently successful competition for the students and their parents. *However, the sale of food and beverages is the single largest source of income for our entire event.* Please support our El Modena Vanguard Band Booster Club as they support our performers in all of their endeavors.

#### 8. **JUDGING AND RECOGNITION CEREMONY**

Judges will be provided by CSBC: Head Judge, Music Performance, Music Effect, Visual Performance, Visual Effect, Percussion, Color Guard, Tabulator.

Only the top 8 highest total scores after penalties advance to Divisional Finals on November 17, 2018. The top 8 will be announced, and performance times for finals will be read. No awards are given to the top 8 at this qualifying show as numerous awards will be earned at finals.

#### 9. **ANNOUNCER**

All announcements will be made by the announcer provided by CSBC from the press box.

#### 10. **FIRST AID**

There will be an EMT present throughout the entire duration of the event. There will be radios and cellular phones on site for emergencies.

#### 11. **PIT CARTS / ASSISTANCE** (Steps for Success)

- Drop large props in Holding Area
- Move to field entrance 20 minutes before performance.
- Move to Staging Area inside fence area on the track (north-east end of the field) 10 minutes before performance.
- When the previous band's performance is finished, proceed forward and unload equipment.
- After unloading, pull forward beyond the goalposts, turn around, and wait for the end of your show.
- You will exit through the same gate you entered.
- Motorized vehicles are NOT allowed on the track per the OUSD Stadium use policy.

#### 12. **ELECTRICAL POWER**

Electrical power is available at the field level on the front of the field near the 50 yard line.

**If we blow a fuse, it is the competitor's responsibility to have a back-up source of electrical power.**

#### 13. **PERFORMER RE-ENTRY AND SEATING**

Performers may re-enter the stadium after their performance and sit in the visitor's stands. Room permitting, they may sit on the far ends of the front sidelines. This will be determined on the day of the event.

#### 14. **PERUSAL PERIOD**

The 5-minute perusal period will take place during the recognition ceremony. You may approach the head judge to speak with an adjudicator as inclined.

#### 15. **DIRECTOR'S HOSPITALITY ROOM**

The Director's Hospitality Room will be located on the visitor's side, north-west of the stadium. Enjoy some relaxing down-time to visit with or make new friends while you feast on some catered meals prepared especially for you.

#### 16. **RAIN**

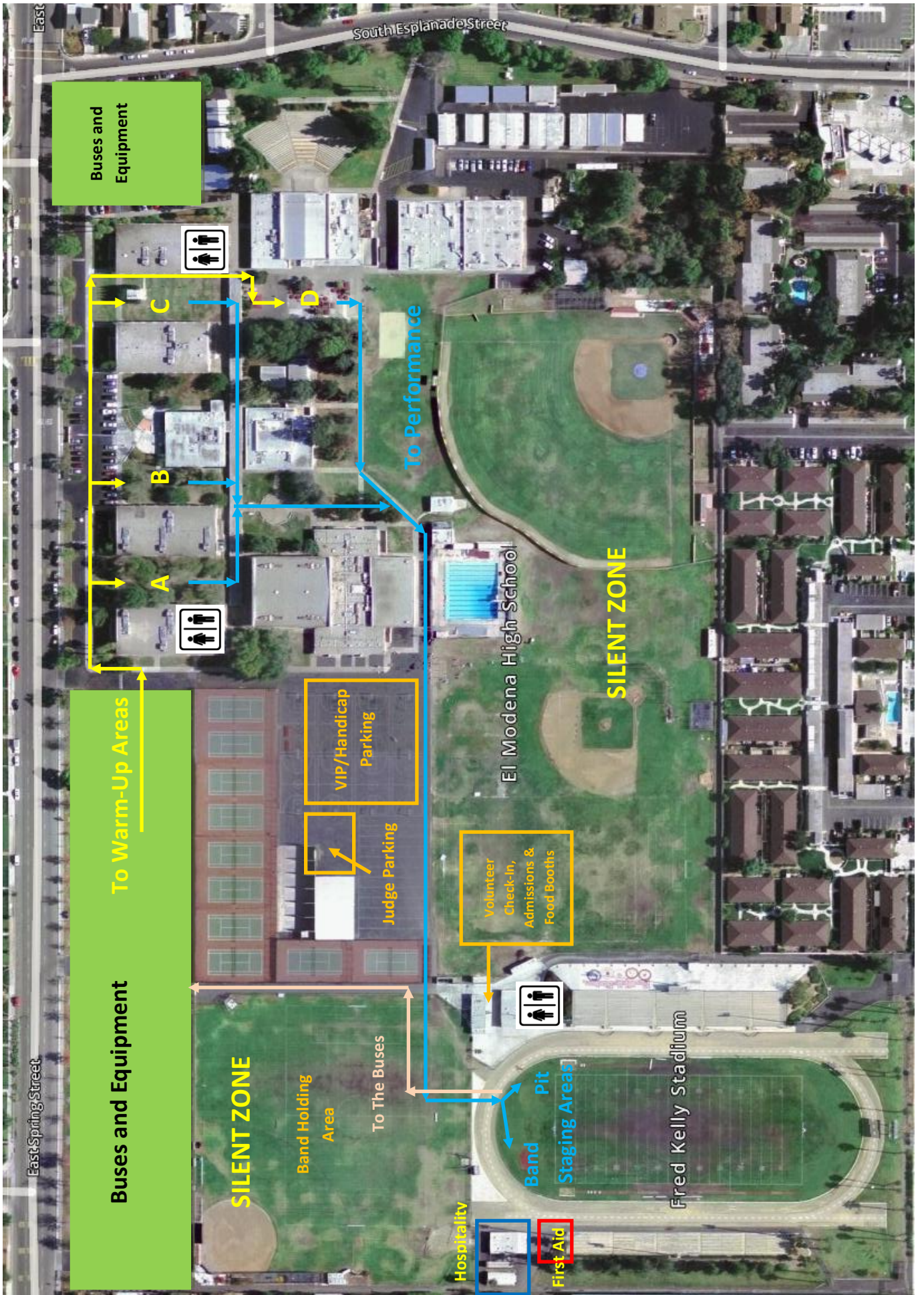
The forecast predicts Saturday, Nov. 10th, to be mostly sunny with zero per cent chance of rain.

We wish the best of luck to you and your team at the 2018 CSBC Semi Finals 2A/5A at Fred Kelly Stadium. I look forward to seeing your performance at Prelims and, hopefully, at Champs!

Best Regards,

Brian Glahn  
Instrumental Music Director  
El Modena High School  
(714) 628-5317  
elmodenaband@gmail.com

<https://www.google.com/maps/dir/Costa+Mesa+Fwy,+California/El+Modena+High+School,+3920+E+Spring+St,+Orange,+CA+92869/@33.766713,-117.8238835,13z/am=t/data=!4m1!3!4m1!2!1m5!1m1!1s0x80dcd90684a4baf1:0xc2f03d82d8b6b16a!2m2!1d-117.8339009!2d33.7428726!1m5!1m1!1s0x80dca13ef3a132b:0x89c9e36e6ad409c!2m2!1d-117.811892!2d33.791166>





*El Modena High School*

*2018 CSBC Semi-Finals at Fred Kelly Stadium*

*Hospitality Menu*

*Tacos*

*Enchiladas*

*Rice & Beans*

*Pepperoni Pizza*

*Lasagna*

*Salad*

*Desserts*

*Bottled Water*

*Assorted Sodas*

*Coffee & Tea*

