



## **Valhalla High School Field Tournament 2018**

Saturday, October 27, 2018  
Performances: 4:45pm – 8:45pm  
Awards Ceremony: 9:00pm

# **Director's Packet**

### **Important Contacts**

**Adam Pezdek**, Instrumental Music Director

Cell: (858) 405-7620

Email: [apezdek@guhdsd.net](mailto:apezdek@guhdsd.net)

**Casey Hernandez**, Asst. Band Director

Cell: (619) 277-5692

Email: [hernandezc@cajonvalley.net](mailto:hernandezc@cajonvalley.net)

**Steve Wilson**, RSDMF President

Cell: (619) 709-7542

Email: [president@valhallamusic.org](mailto:president@valhallamusic.org)

## General Tournament Information

### Director Welcome

Thank you for choosing to participate in the First Annual Valhalla High School Field Tournament. We hope that you and your students have a great performance and enjoy your evening with us. Please review the information we have enclosed and let us know if you have any questions. You may contact any of the Valhalla Staff, Volunteers or Students. Welcome to our tournament!

### DIRECTIONS

Valhalla High School  
1725 Hillsdale Rd.  
El Cajon, CA 92019

#### **From North County**

Head South on I-15, I-805 or I-5  
Merge onto I-8 East  
Take exit 15 and use right lane toward El Cajon Blvd.  
Turn RIGHT onto Chase Ave.  
Chase Ave. turn into Hillsdale Rd.  
Valhalla High School will be on your RIGHT

#### **From South County**

Head North on I-15, I-805 or I-5  
Merge onto I-8 East  
Take exit 15 and use right lane toward El Cajon Blvd.  
Turn RIGHT onto Chase Ave.  
Chase Ave. turn into Hillsdale Rd.  
Valhalla High School will be on your RIGHT

**\*\*\*IMPORTANT\*\*\***

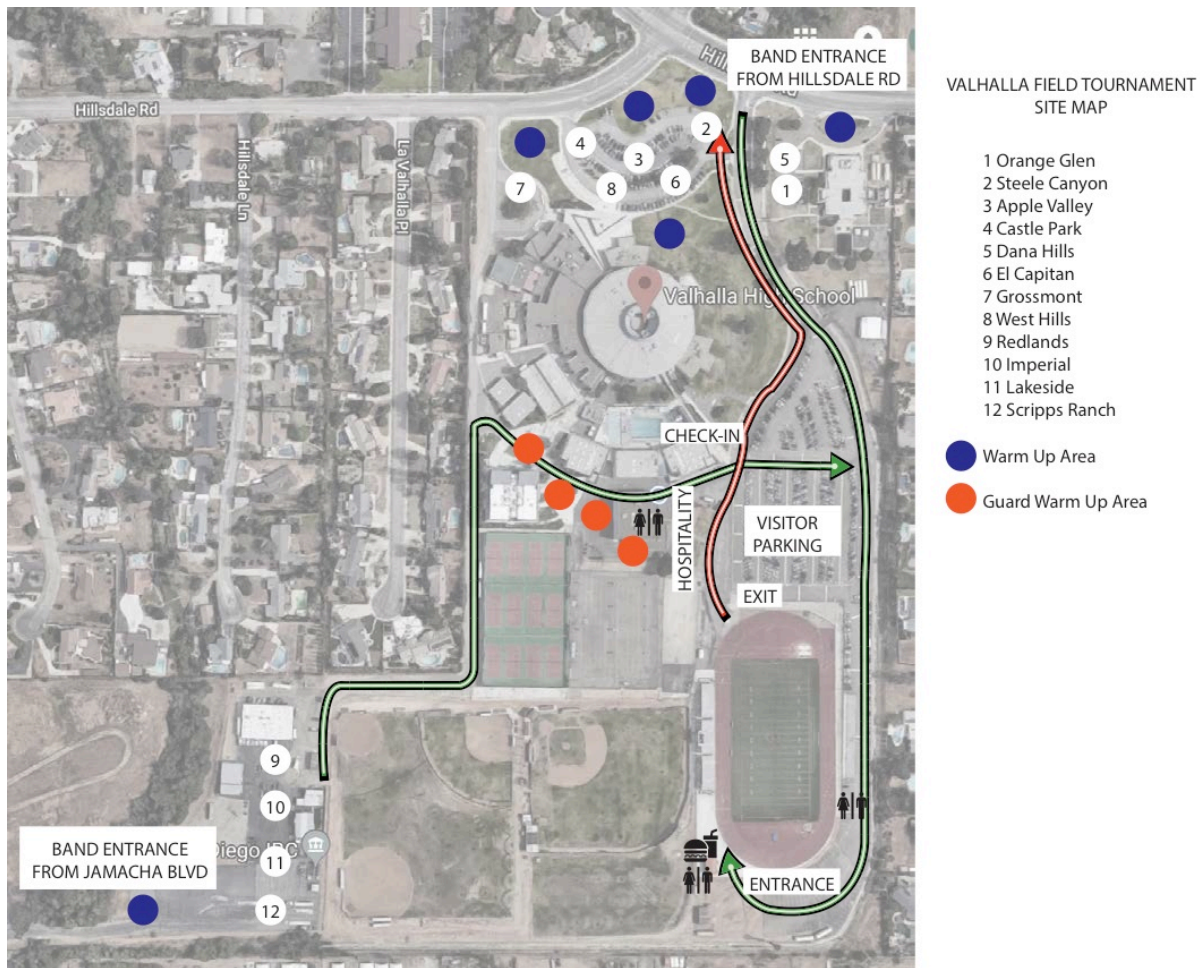
**NOTE: 1A-3A Bands use the Hillsdale Rd. Entrance (See top right corner of map)**

**4A-5A Bands use the Jamacha Rd. Entrance**

**From Chase Ave. turn right onto Jamacha Rd.**

**At .8 miles turn left towards the DMV/Rancho San Diego IBC (See lower left corner of map)**

**\*\*\*SEE DETAILED PARKING INSTRUCTIONS BELOW MAP\*\*\***



**PARKING**

All buses, trailers, and parent support vehicles will park in the designated lots/areas (see map). Again, important note

**\*\*\*IMPORTANT\*\*\***

**NOTE: 1A-3A Bands use the Hillsdale Rd. Entrance (See top right corner of map)**

**Orange Glen and Dana Hills will use the driveway/parking area immediately past the main Hillsdale entrance.**

**Grossmont will turn right onto Hillsdale Rd. and then left into the second driveway.**

**4A-5A Bands use the Jamacha Rd. Entrance**

**From Chase Ave. turn right onto Jamacha Rd.**

**At .8 miles turn left towards the DMV/Rancho San Diego IBC (See lower left corner of map)**

## **Visitor Parking (See Map)**

Visitors will park east of the school and north of the stadium in the lot with the solar panels (see map).

## **DIRECTOR CHECK-IN**

Director Check-In is located across from the parking lot with the solar panels and will be beneath the Alma Mater mural painted on the side of the locker room. At Check-in, band directors or their representatives will receive a copy of this Director's Packet along with materials needed for the tournament. You will be assigned a volunteer, who will guide you and your band around VHS and help you monitor time. Each packet will include the following: one Directors' badge, a set of staff badges, and student/volunteer/chaperone wristbands. You will receive 1 volunteer/chaperone wristband for every 8 students.

## **WARM-UP**

Bands, percussion, and pit will warm up in the grassy islands and lawn areas (blue dots on map). There are no assigned warm-up areas. If you require power, ensure you have a generator. When warming up, ensure you are facing away from the stadium. Guard will warm up on the south side of the campus (orange dots on map).

## **STAGING AND ENTERING/EXITING THE FIELD**

From warm-up, each band will proceed to the stadium. Once at the stadium, they will be directed to a holding area until the field is cleared of the previous band. When ready, each band will enter the field from side 2. Props and Pit instruments can be pre-staged south of the end zone on side 2 while the previous band is performing. Bands, along with props and pit instruments will depart the field from Side 1

## **AWARDS**

Following the conclusion of the last performance, Student Leadership for all participating bands will be called back to the stadium where they will be individually announced as they enter the field and move to their proper arch location. The Awards Ceremony will begin once the Student Leadership arch is formed and the Head Judge has signaled the end of the Scores Perusal Period. Awards will be given for Band, Auxiliary and Percussion in each class. Tournament Champion, High Music, High Visual and High General Effect awards will be given to ensembles based on their scoring in each of these areas, regardless of their classification level. Please inform Student Leaders that their salute must be no longer than four counts in length. All Student Leaders should return to their respective groups once the Awards Ceremony is finished.

## **ADJUDICATION**

The Valhalla Field Tournament is a California State Band Championship sanctioned event. Adjudication for the competition will be based on the CSBC 2018 Field Tournament Rules document and the appropriate CSBC adjudication forms for each judged caption.

### **SPECTATOR ADMISSION**

General Admission for the tournament will be \$15.00. School students (with valid school ID), military, and seniors will be \$10.00. All children 5 and under will be free. Each spectator will be issued a wristband and not be allowed to enter the viewing area without this wristband. All spectators will be sitting on the Home Side of the stadium.

### **WRISTBANDS AND BADGES**

Directors will be issued printed badges for all staff and wristbands for their students, along with separate wristbands for their chaperones and volunteers (1 for every 8 students). Individuals wearing printed badges will be allowed to enter the stadium and hospitality areas free of charge.

### **SEATING**

All seating for spectators, and chaperones and performers of 1A-3A bands will be on the Home Side of the stadium. Chaperones and performers for 4A and 5A bands will be on the visitor side. Designated chaperones, wearing the appropriate wristband, must sit with their respective school for the duration of the tournament. All performers should sit in their assigned areas in the stadium, seats will be marked and a diagram will be included at the show. The stadium gates will open at 3:00pm.

### **HOSPITALITY AREA**

The Hospitality Area will be located across from the parking lot with the solar panels, directly east of the stadium entrance, in front of the gym, just below the "Thunderdome" sign. This area is reserved for directors, their significant others, staff members with appropriate badges, judges, and select VIPs. Light snacks will be served starting at 3:30 pm and dinner will be served starting at 5:30pm. The Hospitality Area will close at 9:00pm.

### **CONCESSIONS**

Food and drinks will be available for purchase at the Concession Stand located at the South end of the stadium. The Concession Stand will be open from 3:00pm to 9:30pm.

### **FIRST AID**

Basic First Aid will be available at the South end of the field, behind the Concession Stand. If additional medical assistance is required, local emergency medical services will be contacted.

### **EMERGENCY PHONE NUMBERS**

Adam Pezdek: (858) 405-7620

Casey Hernandez: (619) 277-5692

Steve Wilson: (619) 709-7542

### **WEATHER CONDITIONS**

In the case of inclement weather, the Tournament Host and Head Judge will determine if the competition will proceed, will be halted temporarily, or will be terminated.

### **ADDITIONAL NOTES**

BBQ's and other open flames are not allowed on the school campus. No outside food or drink will be allowed in the stadium. All food and drink must be purchased at the concession stand. No regular sized vehicles will be allowed to enter the stadium. Only golf carts or small ATV's may be used to pull equipment onto the field.

**SCHEDULE**

Orange Glen High School	Escondido, CA	1A	4:45pm
Castle Park High School	Chula Vista, CA	1A	4:58pm
Steele Canyon High School	Spring Valley, CA	2A	5:11pm
Apple Valley High School	Apple Valley, CA	2A	5:11pm

**BREAK****5:37pm**

Dana Hills High School	Dana Point, CA	3A	6:03pm
El Capitan High School	Lakeside, CA	3A	6:16pm
Grossmont High School	El Cajon, CA	3A	6:29pm
West Hills High School	Santee, CA	3A	6:42pm
Valhalla High School	El Cajon, CA	3A	6:55pm

**BREAK****7:08pm**

Redlands High School	Redlands, CA	4A	7:45pm
Imperial High School	Imperial, CA	5A	7:52pm
Lakeside High School	Lake Elsinore, CA	5A	8:15pm
Scripps Ranch High School	San Diego, CA	5A	8:30pm

**AWARDS****9:00pm**