



## **Grossmont High School Field Tournament 2018**

Saturday, October 20, 2018  
Performances: 6:00pm – 8:00pm  
Awards Ceremony: 8:15pm

# **Director's Packet**

### **Important Contacts**

**Ray Webb**, Instrumental Music Director

Cell: (719) 332-1832

Email: [rwebb@guhdsd.net](mailto:rwebb@guhdsd.net)

**Jonathan Boots**, Asst. Band Director

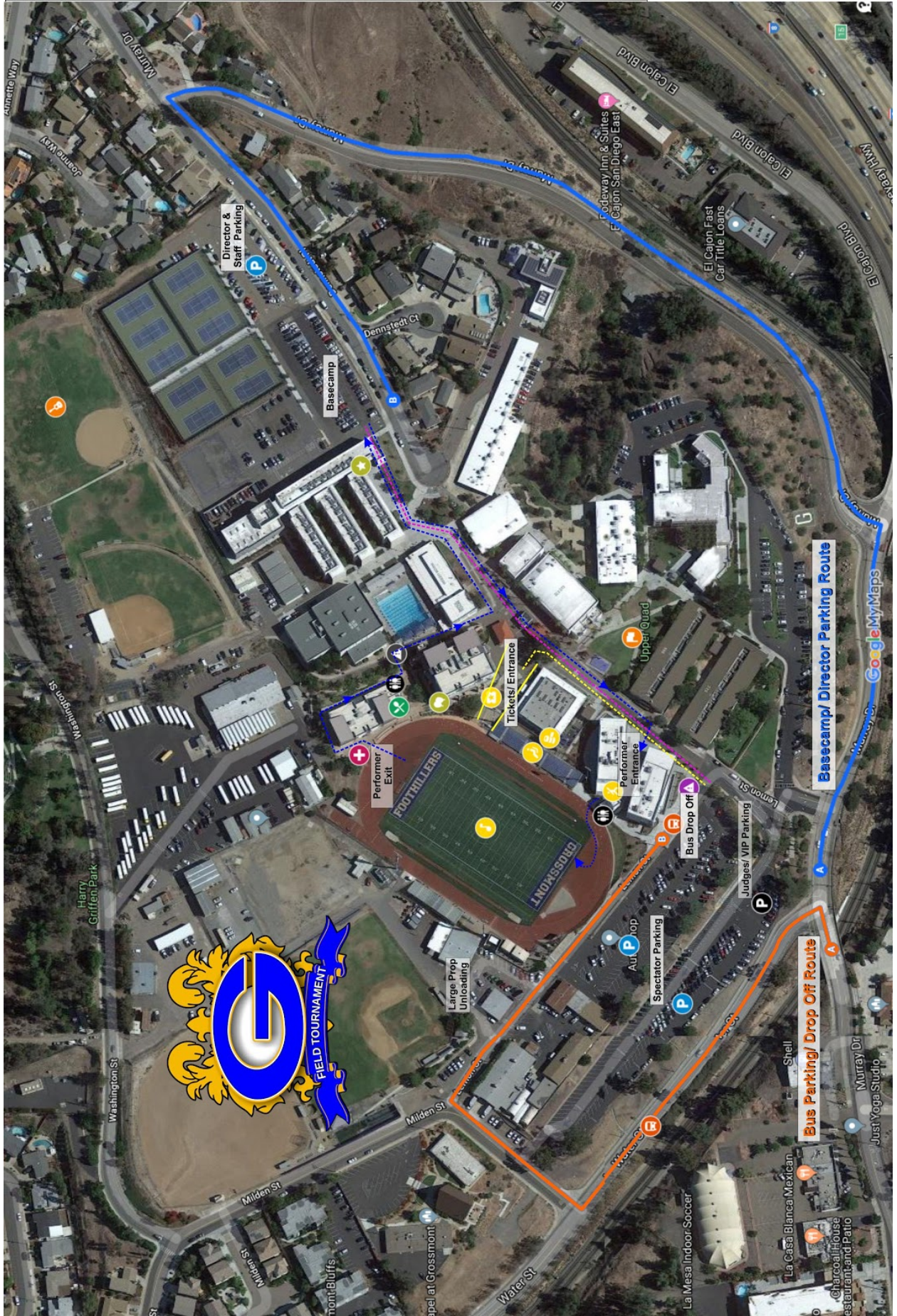
Cell: (619) 850-3075

Email: [jonathan.boots@gmail.com](mailto:jonathan.boots@gmail.com)

**Misty Diamond**, GIMA President

Cell: (619) 627-5637

Email: [president@ghsmusic.org](mailto:president@ghsmusic.org)



## **General Tournament Information**

### **Director Welcome**

Thank you for choosing to participate in the First Annual Grossmont High School Field Tournament. We hope that you and your students have a great performance and enjoy your evening with us. Please review the information we have enclosed and let us know if you have any questions. You may contact any of the Grossmont Staff, Volunteers or Students. Welcome to our tournament!

### **DIRECTIONS**

School Address

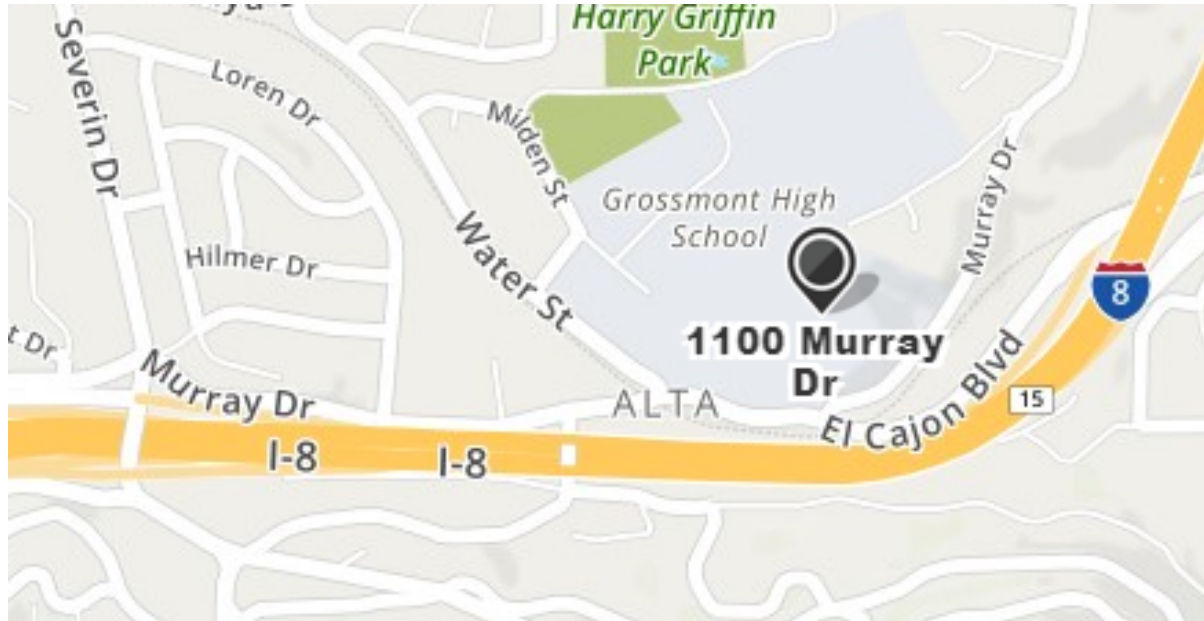
Grossmont High School  
1100 Murray Ave.  
El Cajon, CA 92020

#### **From North County**

Head South on I-15  
Merge onto I-8 East  
Take the Severin exit, EXIT 14C towards Fuerte Dr.  
Turn LEFT onto Severin Dr.  
Turn RIGHT onto Murray Dr.  
Grossmont High School will be on your LEFT

#### **From South County**

Head North on 1-805  
Take EXIT 8 for CA-54 E  
Take CA-125 N  
Take exit 17B for Grossmont Blvd  
Turn RIGHT onto Grossmont Blvd  
Grossmont High School will be on your LEFT



## **PARKING**

### **Student Drop Off (See Map)**

Upon arrival, busses will drop students off at the bus drop off location.

### **Trailer and Support Vehicle Parking (See Map)**

All trailers and parent support vehicles will proceed to the band Base Camp Parking Area. To get to the Base Camp Parking Area, follow Murray Drive, which merges with Water Street. At the STOP sign, take a left onto Murray Drive and proceed up the hill to Dennstedt Place. Turn left at Dennstedt Place. Note: Dennstedt Place is not a through street. You will continue on Dennstedt Place to the Base Camp Parking Area, the last parking lot on your right. When you arrive at the Base Camp Parking Area, you will be instructed where to park.

### **Spectator Parking (See Map)**

Spectators will park at the front entrance to the school (see map)

## **DIRECTOR CHECK-IN**

Director Check-In is located in the south side of the Base Camp Parking Lot. At Check-in, band directors or their representatives will receive a copy of this Director's Packet along with materials needed for the tournament. You will be assigned a volunteer, who will guide you and your band around GHS and help you monitor time. Each packet will include the following: one Directors' badge, a set of staff badges, and student/volunteer/chaperone wristbands. You will receive 1 wristband for every 8 students.

## **WARM-UP**

Percussion and Color Guard will have separate warm-up areas. Band warm-up will take place in the softball field area (see map). Percussion warm-up will take place in the tennis courts adjacent to the Band Camp Parking Lot. Color Guard will warm up in the grassy area adjacent to the blue stage in the school quad.

## **STAGING**

From warm-up, each band will proceed to the stadium. Once at the stadium, they will be directed to a holding area until the field is cleared of the previous band. When ready, each band will enter the field from side 1. Props and Pit instruments can be pre-staged south of the end zone on side 1 while the previous band is performing.

## **AWARDS**

Following the conclusion of the last performance, Student Leadership for all participating bands will be called back to the stadium where they will be individually announced as they enter the field and move to their proper arch location. The Awards Ceremony will begin once the Student Leadership arch is formed and the Head Judge has signaled the end of the Scores Perusal Period. Awards will be given for Band, Auxiliary and Percussion in each class. Tournament Champion, High Music, High Visual and High General Effect awards will be given to ensembles based on their scoring in each of these areas, regardless of their classification level. Please inform Student Leaders that their salute must be no longer than four counts in length. All Student Leaders should return to their respective groups once the Awards Ceremony is finished.

## **ADJUDICATION**

The Grossmont Field Tournament is a California State Band Championship sanctioned event. Adjudication for the competition will be based on the CSBC 2018 Field Tournament Rules document and the appropriate CSBC adjudication forms for each judged caption.

## **SPECTATOR ADMISSION**

General Admission for the tournament will be \$15.00. School students (with valid school ID) and seniors will be \$10.00. All children 5 and under will be free. Each spectator will be issued a wristband and not be allowed to enter the viewing area without this wristband. All spectators will be sitting on the Home Side of the stadium.

## **WRISTBANDS AND BADGES**

Directors will be issued printed badges for all staff and wristbands for their students along with additional wristbands for their chaperones and volunteers (1 for every 8 students). Individuals wearing printed badges will be allowed to enter the stadium and hospitality areas free of charge.

## **SEATING**

All seating for spectators, chaperones and performers will be on the Home Side of the stadium. Designated chaperones, wearing the appropriate wristband, must sit with their respective school for the duration of the tournament. All performers should sit in their assigned areas in the stadium. The stadium gates will open at 5:30pm.

## **HOSPITALITY AREA**

The Hospitality Area will be located on the second floor of the Science building (just south of the stadium concession area). This area is reserved for directors, their significant others, staff members with appropriate badges, judges, and select VIPs. Light snacks will be served starting at 5pm and dinner will be served starting at 6:30pm. The Hospitality Area will close at 8:15pm.

## **CONCESSIONS**

Food and drinks will be available for purchase at the Café Royal Blue Concession Stand located at the North end of the stadium. The Concession Stand will be open from 5:30pm to 9pm.

## **FIRST AID**

Basic First Aid will be available near the North end zone of the field, just below the Concession Stand. If additional medical assistance is required, local emergency medical services will be contacted.

## **EMERGENCY PHONE NUMBERS**

Ray Webb: (719) 332-1832  
Jonathan Boots: (619) 850-3075  
Misty Diamond: (619) 627-5637

## **WEATHER CONDITIONS**

In the case of inclement weather, the Tournament Host and Head Judge will determine if the competition will proceed, will be halted temporarily, or will be terminated.

## **ADDITIONAL NOTES**

BBQ's and other open flames are not allowed on the school campus. No outside food or drink will be allowed in the stadium. All food and drink must be purchased at the concession stand. No regular sized vehicles will be allowed to enter the stadium. Only golf carts or small ATV's may be used to pull equipment onto the field.

**SCHEDULE**

Orange Glen High School	Escondido, CA	1A	6:00pm
Castle Park High School	Chula Vista, CA	1A	6:13pm
West Hills High School	Santee, CA	2A	6:26pm

**BREAK**

**6:39pm**

El Capitan High School	Lakeside, CA	3A	7:09pm
Grossmont High School	El Cajon, CA	3A	7:22pm
Valhalla High School	San Diego, CA	3A	7:35pm
Patrick Henry High School	San Diego, CA	4A	7:45pm

**AWARDS**

**8:15pm**

## 2018 Grossmont Field Tournament Extended Schedule

Order	Band	Class	Warm-Up	To Stadium	Pit Gate Entry	Band Gate Entry	Performance
1	Orange Glen	1A	4:50pm	5:35pm	5:45pm	5:55pm	6:00pm
2	Castle Park		5:03pm	5:48pm	5:58pm	6:08pm	6:13pm
3	West Hills	2A	5:16pm	6:01pm	6:11pm	6:21pm	6:26pm
Break							
4	El Capitan	3A	5:59pm	6:44pm	6:54pm	7:04pm	7:09pm
5	Grossmont	3A	6:12pm	6:57pm	7:07pm	7:17pm	7:22pm
6	Valhalla	3A	6:25pm	7:10pm	7:20pm	7:30pm	7:35pm
7	Patrick Henry	4A	6:38pm	7:23pm	7:33pm	7:43pm	7:48pm
Awards							8:15pm