



3rd Annual
Escondido High School
Marching Band Tournament
Saturday, October 14 2023

1535 North Broadway - Escondido, CA 92026 - (760)291-4066 - gguzevich@euhsd.org

Welcome to Escondido!

We are genuinely glad you are here! It's been quite a year for everyone and we just want to tell you how happy we are that you decided to join us for the 3rd Annual EHS Tournament.

Regardless of how prepared you think you are (or aren't, as the case may be...) what matters most is that we are together enjoying the music, the spectacle, and the camaraderie that makes the marching arts unique among all school activities.

We hope to make your stay with us as comfortable as possible (or at least as comfortable as school buses and box trucks can make us...). Let us know if you need anything while we're here and I promise we will do everything we can to serve you and your amazing students.

Visit the hospitality room when you finally get to relax and breathe.

Make sure you and your staff are wearing your CSBC provided lanyards as that is the ticket to the hospitality room, as well as making sure your parents and students are wearing the provided wristbands at all times.

We hope to exceed your expectations.

Thanks for being here,

Greg Guzevich

Director of Music | Escondido High School



DIRECTIONS:

From the SOUTH:

- Travel NORTH on I-15
- Exit at "El Norte Parkway"
- Turn RIGHT and travel EAST on El Norte Parkway.
- Turn LEFT and travel NORTH on Broadway
- Travel to the THIRD Gate parking lot entrance.
- You will be directed to your parking zone

From the WEST:

- Travel EAST on CA-78 until the freeway ends
- Continue EAST to the light at BROADWAY
- Turn LEFT and travel NORTH on Broadway
- Travel to the THIRD Gate parking lot entrance.
- You will be directed to your parking zone

From the NORTH:

- Travel SOUTH on I-15
- Exit at "El Norte Parkway"
- Turn LEFT and travel EAST on El Norte Parkway.
- Turn LEFT and travel NORTH on Broadway
- Travel to the THIRD Gate parking lot entrance.
- You will be directed to your parking zone

FOR ALL TRUCKS AND BUSES:

Buses and Trucks will park in the lot immediately adjacent to the stadium and the warm-up zones provided for each group. We will work with your group to make sure you park together. Warm-up zones are shown on the next page.

CHECK-IN:

The CHECK-IN tent is located just outside the main stadium ticket gate. It is labeled "1" on the map.

WRISTBANDS:

We are happy to provide chaperone support passes. You should have 1 for every 10 performers.

LOGISTICAL SCHEDULE FOR OUR EVENT

Escondido High School Field Tournament

Saturday, October 14, 2023 - Escondido, Ca

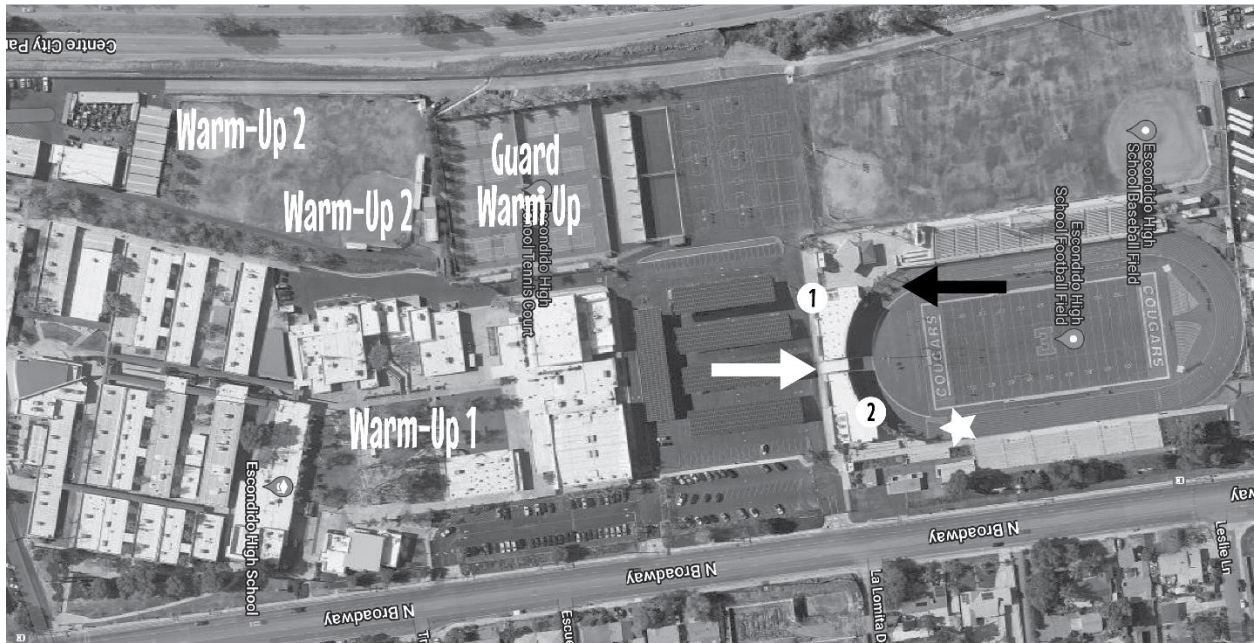
Group Name	Class	Perform	Band Gate Entry	Pit Gate Entry
Santana Royal Regiment Marching Band and Color Guard	2A	5:00 PM	4:56 PM	4:50 PM
Oceanside High School Pirate Regiment	2A	5:13 PM	5:09 PM	5:03 PM
Valhalla High School	2A	5:26 PM	5:22 PM	5:16 PM
Classical Academy High School	2A	5:39 PM	5:35 PM	5:29 PM
El Capitan High School Marching Vaqueros	2A	5:52 PM	5:48 PM	5:42 PM
78th Regiment	2A	6:05 PM	6:01 PM	5:55 PM

DINNER		6:18 PM		
---------------	--	----------------	--	--

Scripps Ranch High School	3A	7:18 PM	7:14 PM	7:08 PM
Sultana High School	3A	7:31 PM	7:27 PM	7:21 PM
Imperial High School	4A	7:44 PM	7:40 PM	7:34 PM
The Spirit of Great Oak	5A	7:59 PM	7:55 PM	7:49 PM

AWARDS		8:30 PM		
---------------	--	----------------	--	--

Generation Date: 9/28/2023 12:29 PM



BAND ENTRANCE/EXIT FOR PERFORMANCE:

ALL Bands enter and exit on SIDE 2. Enter through the “tunnel” (WHITE ARROW) and exit through the main gate (BLACK ARROW). Bands “on deck” will pre-set on the track outside the south zone.

Front ensembles need to arrive at least ONE BAND prior to your performance time.

PROP STAGING:

Props can be staged beforehand in the area indicated by the WHITE STAR. Please make sure you have enough staff and assistance to move your percussion equipment and props to and from the stadium performance area. NO trucks or vehicles of significant weight will be allowed on the track.

WARM-UP ZONES:

Warm-up Zones have been designated for each group. The entire campus is available for Battery, Front Ensembles, and Guard. Please make sure any metronomes and full ensembles are aimed away from the stadium so as not to interfere with performances or show logistics.

SPECTATOR PARKING:

Spectator parking is free and available in the lot located west the stadium.

ADMISSIONS:

General Admission is \$15, Military \$12, and kids 5 and under are free. Our snack bar offers a variety of food and beverages for students, chaperones, and band parents. This

tournament is a fundraiser and all participants are encouraged to support the EHS Cougar Band by purchasing food and beverages at the concession stand in the stadium.

INCLEMENT WEATHER PLAN:

Performances possibly affected by inclement weather will be moved into the gym directly across from the stadium on the opposite side of the parking lot. Unit entry will be from the NORTHWEST entrance and exit through the NORTHEAST entrance. Use of props is limited to objects that can fit through the doors.

ANNOUNCEMENTS AND SHOUTOUTS

There will be an EHS announcer for this event. We will be using the most u to date announcement forms from CSBC. Make sure your information is current and correct.

Students, Spectators, Staff and Fans will have an opportunity to purchase "SHOUT-OUTS!" to be read before and after an ensemble's performance. Shout outs are \$2 and payments can be made directly to the EHS Music Boosters through VENMO or in cash at the event. Just look for the SHOUT OUT booth.

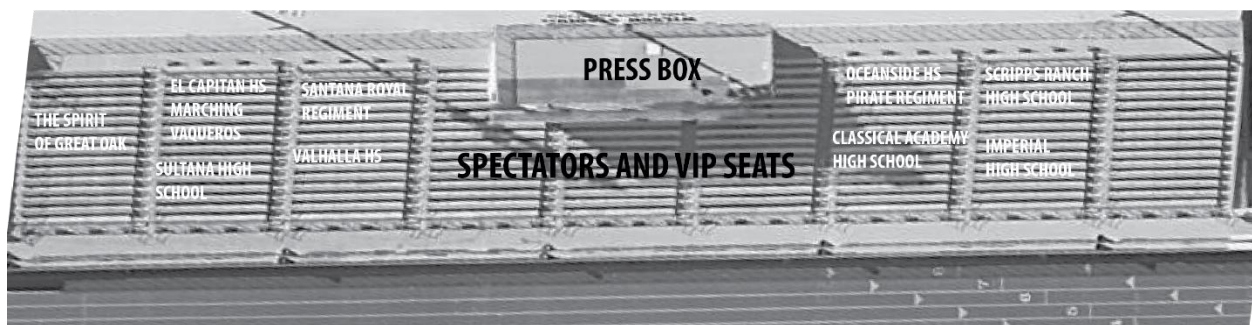
AWARDS CEREMONIES:

Please have your leaders line up on the track in performance order at the performer entrance on the south side of the stadium following the final performance of the night. Leaders will be assigned a yard line or split to parade to, and will proceed to that point (on the front sideline) when introduced by the announcer.

The awards ceremony will begin approximately 30 minutes after the last performing group finishes. A meet & greet with the CSBC Judges will be held near the Hospitality Room.

UNIT SEATING IN THE STANDS AND ENDZONE:

Upon completion of your performance, please make sure they have wristbands to re-enter the stadium. Re-entry is next to the main entrance gate and is marked. Ensembles have designated seating on the HOME side to watch the performances and the awards ceremony. Please refer to the image below:



COMMITTED TO THE HIGHEST STANDARDS:

The Escondido High School Music Boosters (EHSMB) are dedicated to hosting a well-run, enjoyable event with the goal of supporting the marching arts and music education through our event.

If you have any questions, concerns, comments, or suggestions, please contact Greg Guzevich so that we can provide the best event possible. Thank You!

gguzevich@euhsd.org Day of Event contact number 484-515-0691

WISHING YOU THE BEST OF SKILL THROUGHOUT THE 2023 SEASON!