

2022 TCGC Georgetown
Saturday, February 26
Start Time: 9:00 am

Facility: Georgetown HS
2211 N. Austin Ave.
Georgetown, TX 78626

Ticket Prices: \$10 (fees may apply)

Show Contact Info:

Contest Director

Chelsea Crochet
westcd@texascolorguardcircuit.org

Show Host Contact

Justin Smith
smithj9@georgetownisd.org

Judging Panels:

Color Guard

EQ Joey Powell
MV Curtis Uhlemann
DA Anthony Riederer
GE David Schlieve
GE Greg Llacer (LJ)

TO LISTEN TO JUDGES COMMENTARY:

Each director should be set up with an account through CompetitionSuite. This is the ONLY WAY to receive judge commentary for any TCGC event.

SOUND TESTING: One hour prior to the start of the contest and during breaks at the discretion of the contest director.

WARM-UP AREA: All maps are in this packet. Units should arrive/check-in at the time on the schedule. Please be prepared to provide your own sound equipment in the warm-up facilities.

RECAPS: Recaps will be available online within 24 hours of the end event.

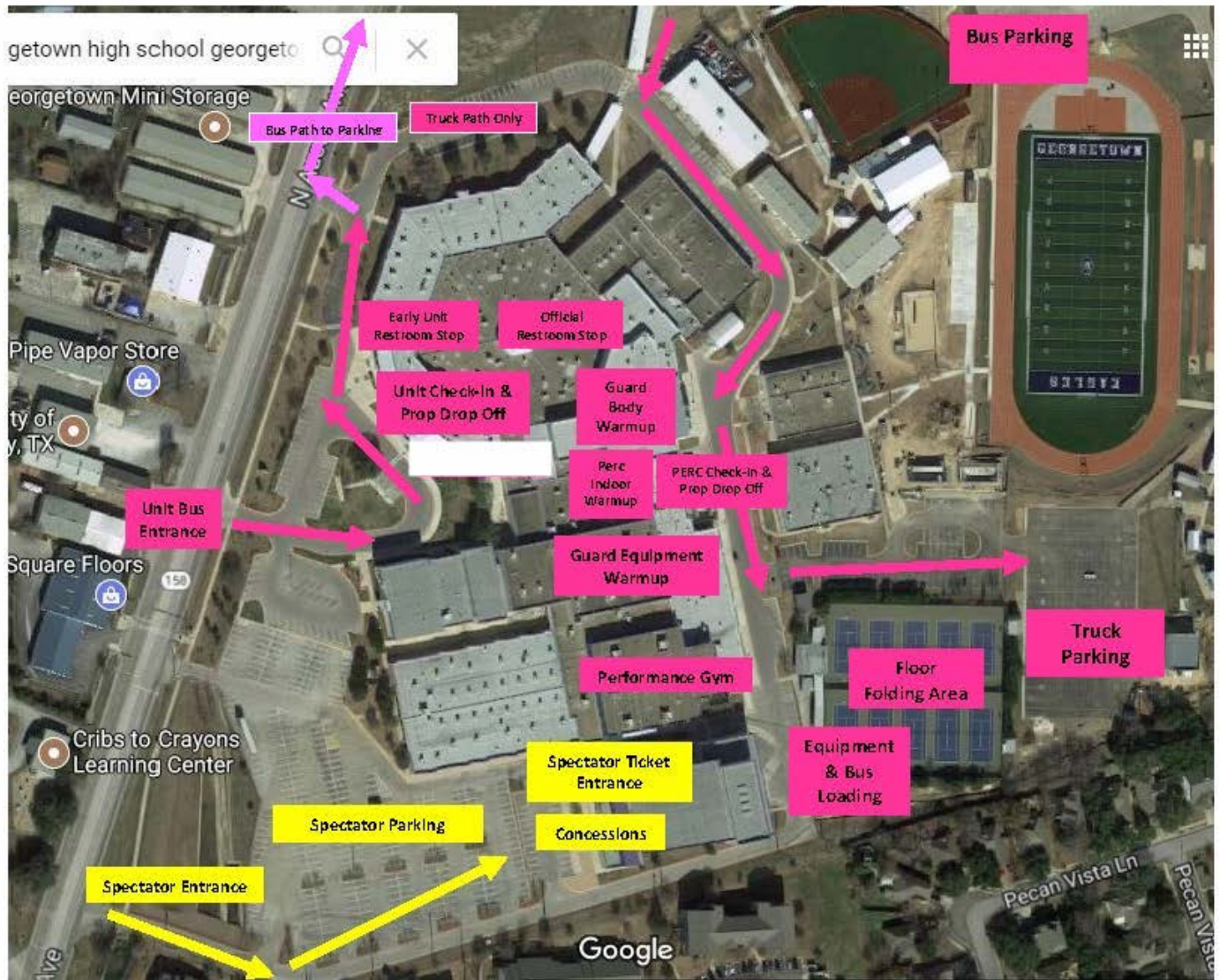
RETREAT: There will be captain's only retreat(s) throughout the day as notated on the schedule.

VIDEO TAPING:

TCGC will do everything possible to provide a video of each performance.

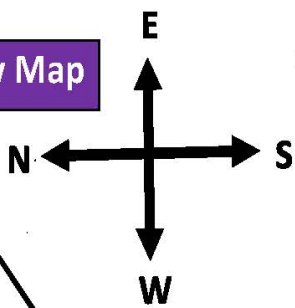
We appreciate your flexibility with the ever-changing world we live in today. We will be in close communication with the show host, and all necessary parties prior to our events, and will do our best to communicate in a timely manner any changes in circumstances surrounding our events.





Colorguard Contest Flow Map

GEORGETOWN HIGH SCHOOL Main Bldg



**BUS
PARKING
ONLY**
(STADIUM LOT)

**TRUCK
PARKING
ONLY**

TENNIS COURTS
Floor Folding Area

Truck & Bus Path Only

Truck & Bus Path Only

Prop & Unit Pickup

Performing
Arts Center

**NO ENTRY
Bus / Truck
EXIT ONLY**

Concessions

Food Trucks

Outside Eating Area

Spectator
Parking

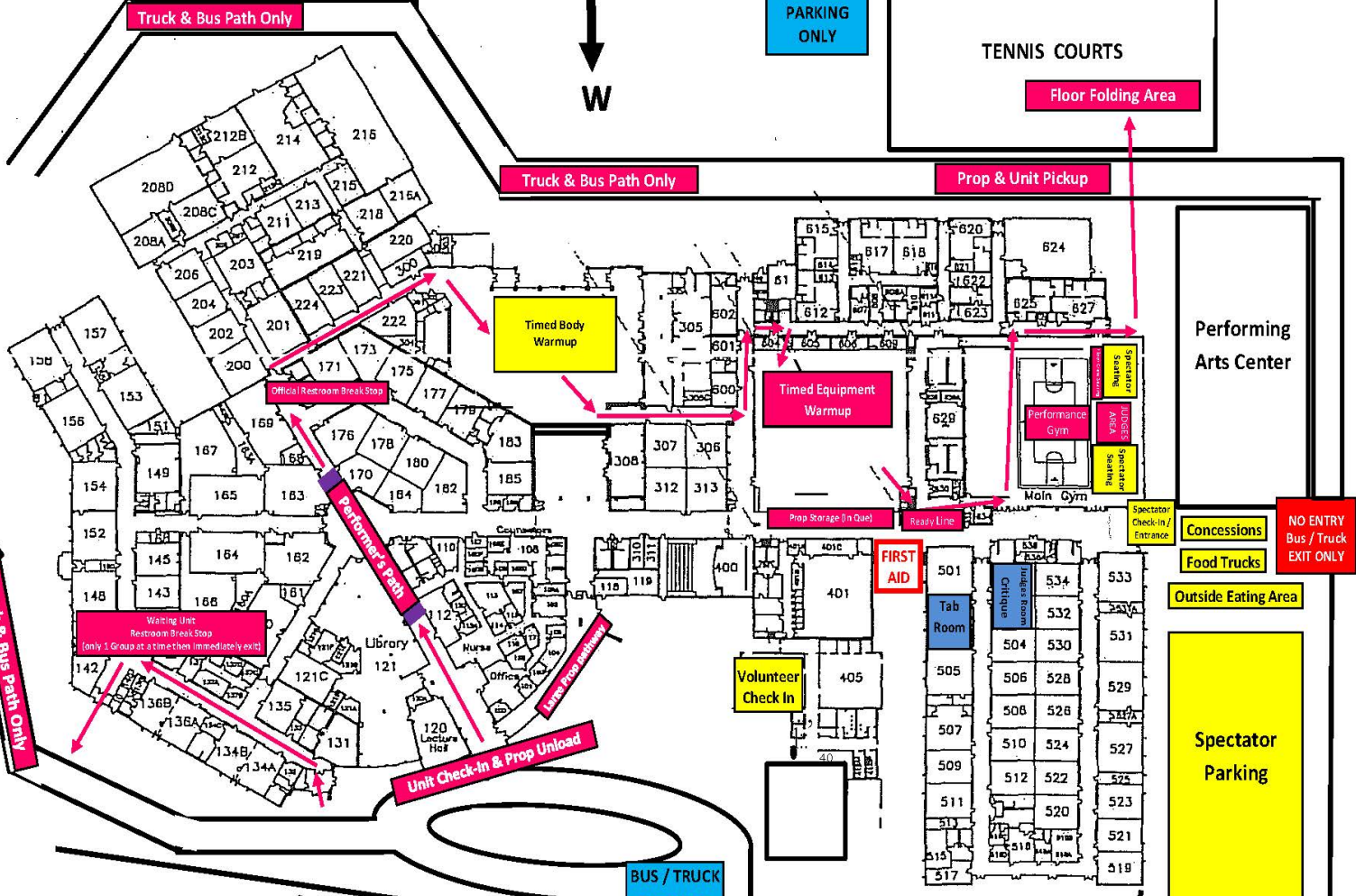
**SPECTATOR
ENTRANCE
ONLY**

**BUS / TRUCK
ENTRANCE
ONLY**

**EXIT
ONLY**

Austin Ave.

Austin Ave.



Truck & Bus Path Only

Unit Check-in & Prop Unload

Unit Check-in & Prop Unload

Waiting Unit
Restroom Break Stop
(only 1 Group at a time then immediately exit)

Official Restroom Break Stop

Timed Body Warmup

Timed Equipment Warmup

Performance Gym

Prop Storage (In Queue)

Ready Line

FIRST AID

Volunteer Check In

Tab Room

Judges Room

Spectator Check-in / Entrance

Spectator Seating

Bus / Truck Seating

Bus / Truck Seating

Bus / Truck Seating

Bus / Truck Seating

Bus / Truck Seating

Bus / Truck Seating

Bus / Truck Seating

Bus / Truck Seating

Bus / Truck Seating

Bus / Truck Seating

Bus / Truck Seating

Bus / Truck Seating

Bus / Truck Seating

Bus / Truck Seating

Bus / Truck Seating

Bus / Truck Seating

Bus / Truck Seating

Bus / Truck Seating

Bus / Truck Seating

Bus / Truck Seating

Bus / Truck Seating

Bus / Truck Seating

Bus / Truck Seating

Bus / Truck Seating

Bus / Truck Seating

Bus / Truck Seating



All TCGC contest sites must have a minimum of seventy by one hundred feet (70' x 100') to accommodate a "safety zone" of five (5) feet from any spectator seating. If no spectators are seated on the left and right sides, then the safety zone will be eliminated on the left and right sides of the competition area and can extend to a maximum of 106' x 78'.

The "competition area" at this event measures 125' X 75'. All performing groups must be prepared to perform within that area. Floors (tarps) may not extend into safety zones per rules found in the WGI Adjudication Manual and Rulebook.

**Performer
Entrance**

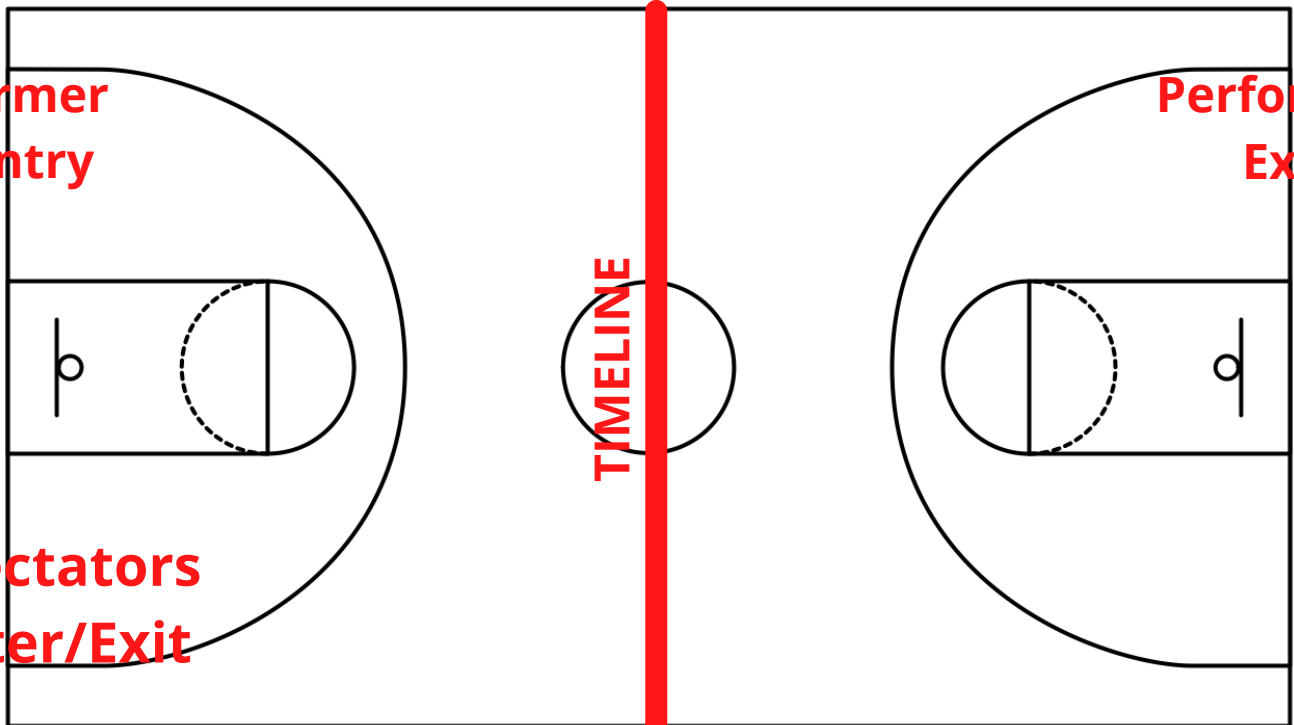
Back Seating

Sound Table

**Performer
Re-entry**

**Performer
Exit**

**Spectators
Enter/Exit**



Front Seating



