

**2023 TCGC Johnson HS  
SRA- SW  
CAD, NOV JVRA Championships Saturday, March 18, 2023  
Start Time: 10:00 AM**

**Facility:** Moe & Gene Johnson HS  
4260 FM 967  
Buda, TX 78610

**Ticket Prices:** \$15 (fees may apply)  
Online Ticket Sales  
(Prior to and day of)

**Show Contact Info:**  
**Contest Director**  
Chelsea Crochet  
westcd@texascolorguardcircuit.org

**Show Host Contact**  
Ida Musgrove  
president@johnsonbands.com

**Judging Panels:**  
**Color Guard**  
EQ Tabitha Sebastino  
MV Cheryl Myers  
DA Tate Fincher  
GE Mike Lopinto (LJ)  
GE Laura Baker

**TO LISTEN TO JUDGES COMMENTARY:**  
Each director should be set up with an account through CompetitionSuite. This is the ONLY WAY to receive judge commentary for any TCGC event.

**FEES:** All outstanding fees for area/championships, pull outs/no-shows, and senior medals must be paid before your unit will be able to perform at this event.

**SOUND TESTING:** One hour prior to the start of the contest and during breaks at the discretion of the contest director.

**Unit Storage:** The host will be providing an area to store garment bags to allow units to change for retreat quickly. This area is ONLY for costumes/clothing, and not an equipment/prop storage. This area will only be allowed for changing purposes, and not a hang out area.

**WARM-UP AREA:** All maps are in this packet. Units should arrive/check-in at the time on the schedule. Please be prepared to provide your own sound equipment in the warm-up facilities.

**RETREAT:** CAD, NOV, and JVRA championship retreat will be a full guard retreat.  
All other classes will be captains only retreat as notated on the schedules.

**VIDEO TAPING:** TCGC will do everything possible to provide a video of each performance.

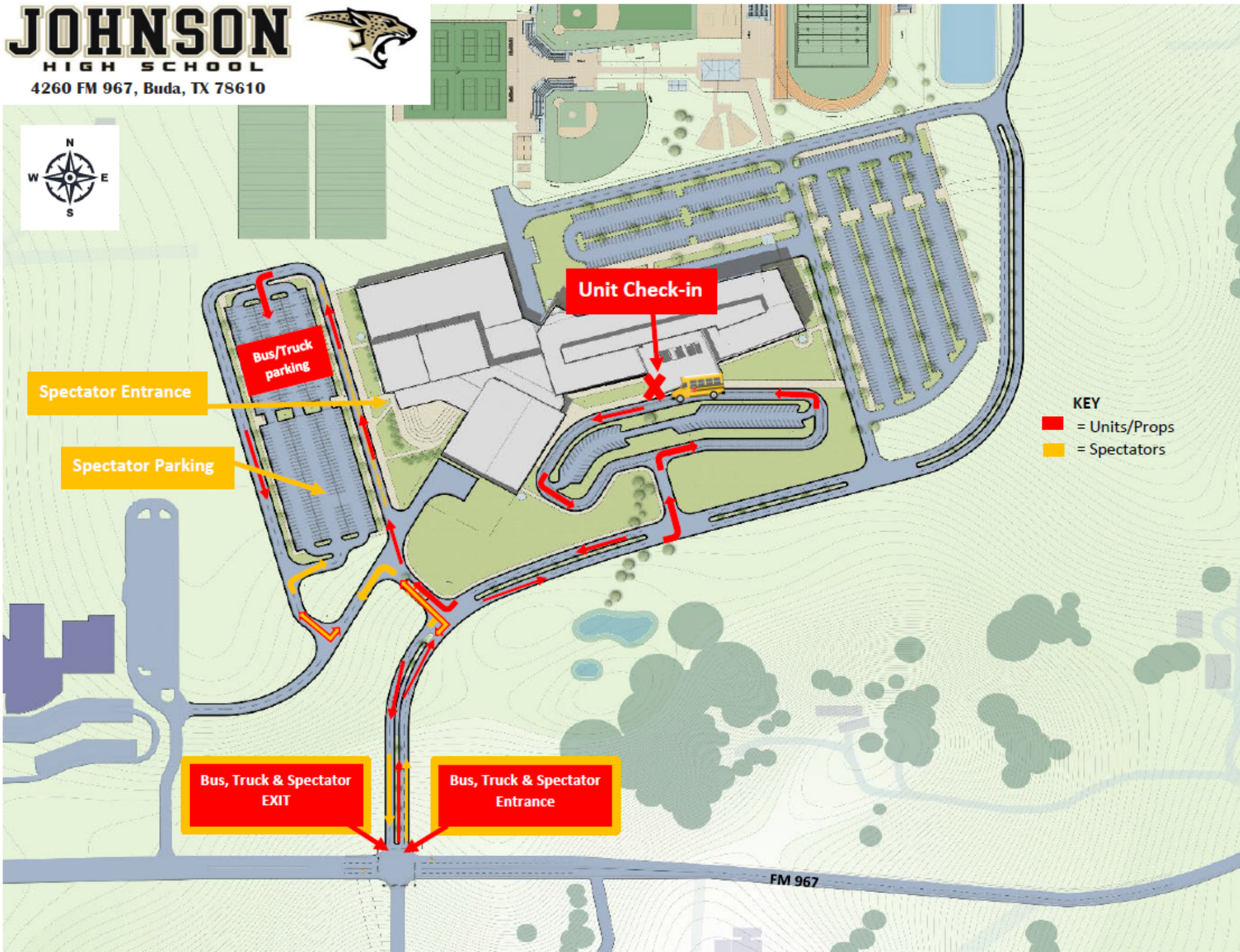
*We appreciate your flexibility with the ever-changing world we live in today. We will be in close communication with the show host, and all necessary parties prior to our events, and will do our best to communicate in a timely manner any changes in circumstances surrounding our events.*



# JOHNSON

HIGH SCHOOL

4260 FM 967, Buda, TX 78610





- = Unit Path
- = Props
- = Directors/Judges/Staff
- = Vendors
- = Spectators
- = Concessions
- = Dressing area for retreat

Pathway to DRESS AREA FOR RETREAT

PROPS must enter the building through exterior doors at group equipment warm-up time and park at waiting area marked by X

Dressing areas for retreat

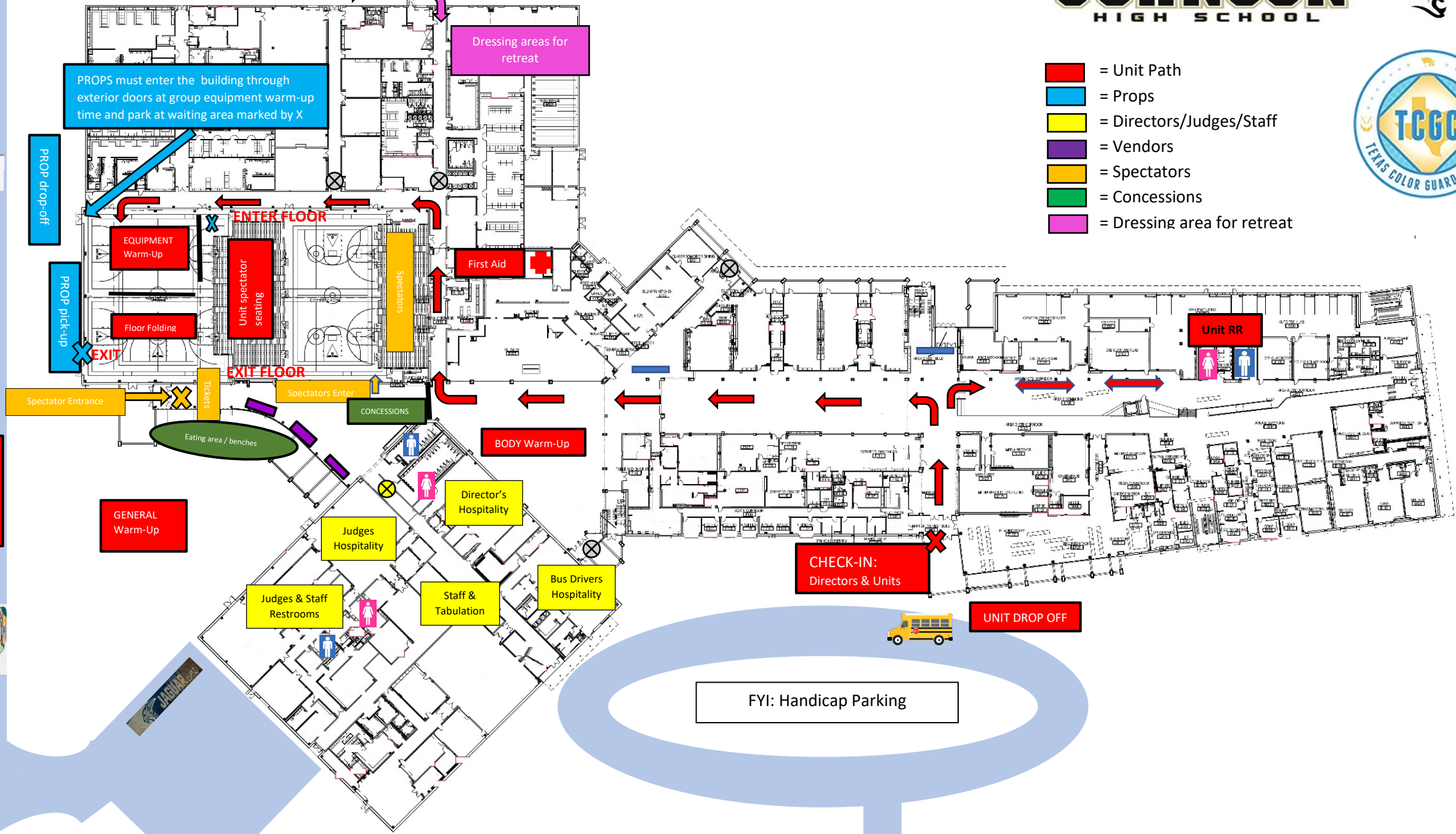
PROP drop-off

PROP pick-up

Trucks / Prop drop off

To bus parking

Kona Ice



FYI: Handicap Parking

UNIT DROP OFF

CHECK-IN:  
Directors & Units

BODY Warm-Up

Staff & Tabulation

Bus Drivers Hospitality

Director's Hospitality

Judges Hospitality

Judges & Staff Restrooms

GENERAL Warm-Up

Eating area / benches

Spectators Enter

EXIT FLOOR

Unit spectator seating

Floor Folding

EQUIPMENT Warm-Up

First Aid

Unit RR

Spectator Entrance

TICKETS

EXIT

PROP drop-off

PROP pick-up

Trucks / Prop drop off

To bus parking

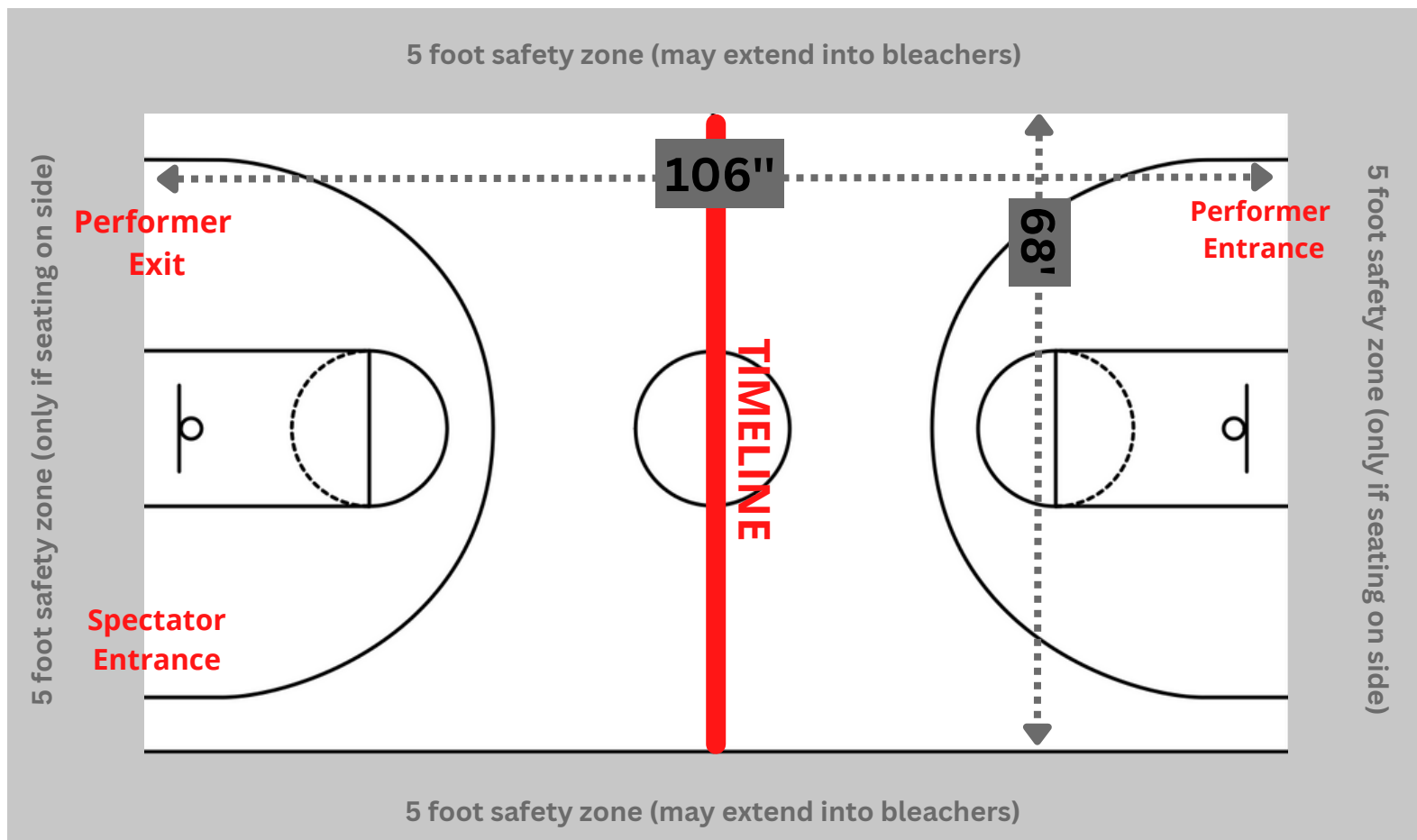
Kona Ice



At TCGC events, we strive to provide a minimum of seventy by one hundred feet (70' X 100') to accommodate a "safety zone" of five (5) feet from any spectator seating. If no spectators are seated on the left and right sides, then the safety zone will be eliminated on the left and right sides of the competition area and can extend to a maximum of 106' X 78'.

The "competition area" at this event measures 106' X 68'. All performing groups must be prepared to perform within that area. Floors (tarps) may not extend into the safety zones per rules found in the WGI Adjudication Manual and Rulebook.

## BACKSIDE SEATING



## SPECTATOR SEATING

JOHNSON BAND  
BOOSTERS

# Concession Menu

EST. 2019

## Entrees:

Sausage Wrap	\$5.00
Hamburger	\$6.00
Cheeseburger	\$6.00
Hot Dog	\$3.00

## Meal Deal: \$10.00

Includes your choice of a sausage wrap, hamburger, or cheeseburger, plus chips, soda or bottled water, and cookies.

## Snacks:

Nachos	\$4.00
Street Corn	\$3.00
Candy	\$2.00
Chips	\$1.00
Popcorn	\$2.00
Pickle	\$1.00
Fresh Fruit	\$1.00

## Beverages:

Gatorade	\$2.00
Soda	\$2.00
Bottled Water	\$1.00
Coffee	\$2.00

Soda options include Coke, Diet Coke, Sprite, Dr. Pepper, and Diet Dr. Pepper



JOHNSON BAND  
BOOSTERS

*Flowers*

EST. 2019

## *Roses: Celebrate the Day*

Celebrate an amazing show and season with  
the gift of roses!

**1 rose for \$4.00**

**-or-**

**3 roses for \$10.00**



Available while supplies last.

**JAGUAR**  
BAND BOOSTERS





JOHNSON BAND  
BOOSTERS

# Mini-Rifles

EST. 2019

## Winter Guard Souvenir Mini-Rifle



### Unique Personalization Options Available

Add personality to your mini-rifle with a selection of themed vinyl stickers in varying sizes for an additional fee. Mini-rifles are approximately 24" in length.

**JAGUAR**  
BAND BOOSTERS



JOHNSON BAND  
BOOSTERS

# Mini-Flags

EST. 2019



**\$75**

## Winter Guard Souvenir Mini-Flag

Mini-flags available in a wide variety of materials and designs. Mini-flags are approx. 20"x14" mounted on a 30" pole.

