

**2023 TCGC Clear Creek HS
AA/SCH A Area; SJVA/SRA Champs
SNA, Open, World
Saturday, March 25, 2023
Start Time: 9:00AM**

Facility: Clear Creek HS
2305 E. Main St.
League City, TX 77573

Ticket Prices: \$15 (fees may apply)
Online Ticket Sales
(Prior to and day of)

Show Contact Info:

Contest Director

Kellie Whitley
eastcd2@texascolorguardcircuit.org

Show Host Contact

Jonathan Morales
jomorales@ccisd.net

Judging Panels:

Color Guard

EQ Ben Ash
MV Jen Barton
DA Shelba Waldron
GE Kendall LeJeune (LJ)
GE Joshua Potter

TO LISTEN TO JUDGES COMMENTARY:

Each director should be set up with an account through CompetitionSuite. This is the ONLY WAY to receive judge commentary for any TCGC event.

FEES: All outstanding fees for area/championships, pull outs/no-shows, and senior medals must be paid before your unit will be able to perform at this event.

SOUND TESTING: One hour prior to the start of the contest and during breaks at the discretion of the contest director.

Unit Storage: The host will be providing an area to store garment bags to allow units to change for retreat quickly. This area is ONLY for costumes/clothing, and not an equipment/prop storage. This area will only be allowed for changing purposes, and not a hang out area.

WARM-UP AREA: All maps are in this packet. Units should arrive/check-in at the time on the schedule. Please be prepared to provide your own sound equipment in the warm-up facilities.

RETREAT: AA and A area retreat will be a full guard retreat. SJVA, and SRA championship retreat will also be a full guard retreat.
All other classes will be captains only retreat as notated on the schedules.

VIDEO TAPING: TCGC will do everything possible to provide a video of each performance.

We appreciate your flexibility with the ever-changing world we live in today. We will be in close communication with the show host, and all necessary parties prior to our events, and will do our best to communicate in a timely manner any changes in circumstances surrounding our events.



CLEAR CREEK HIGH SCHOOL ROOM MAP

Spectator Parking

Bus and EQ
Parking

Main St.

Stadium

Spectator
Entrance

Performer Only
Bathrooms

Performer
Holding
Area

Equipment
Warm Ups

Courty
ard

Courty
ard

Performance
Gym

Performer
Exit

Prop
Holding
Area

Body
Warmup

Floor
Re-Fold

EQ pickup

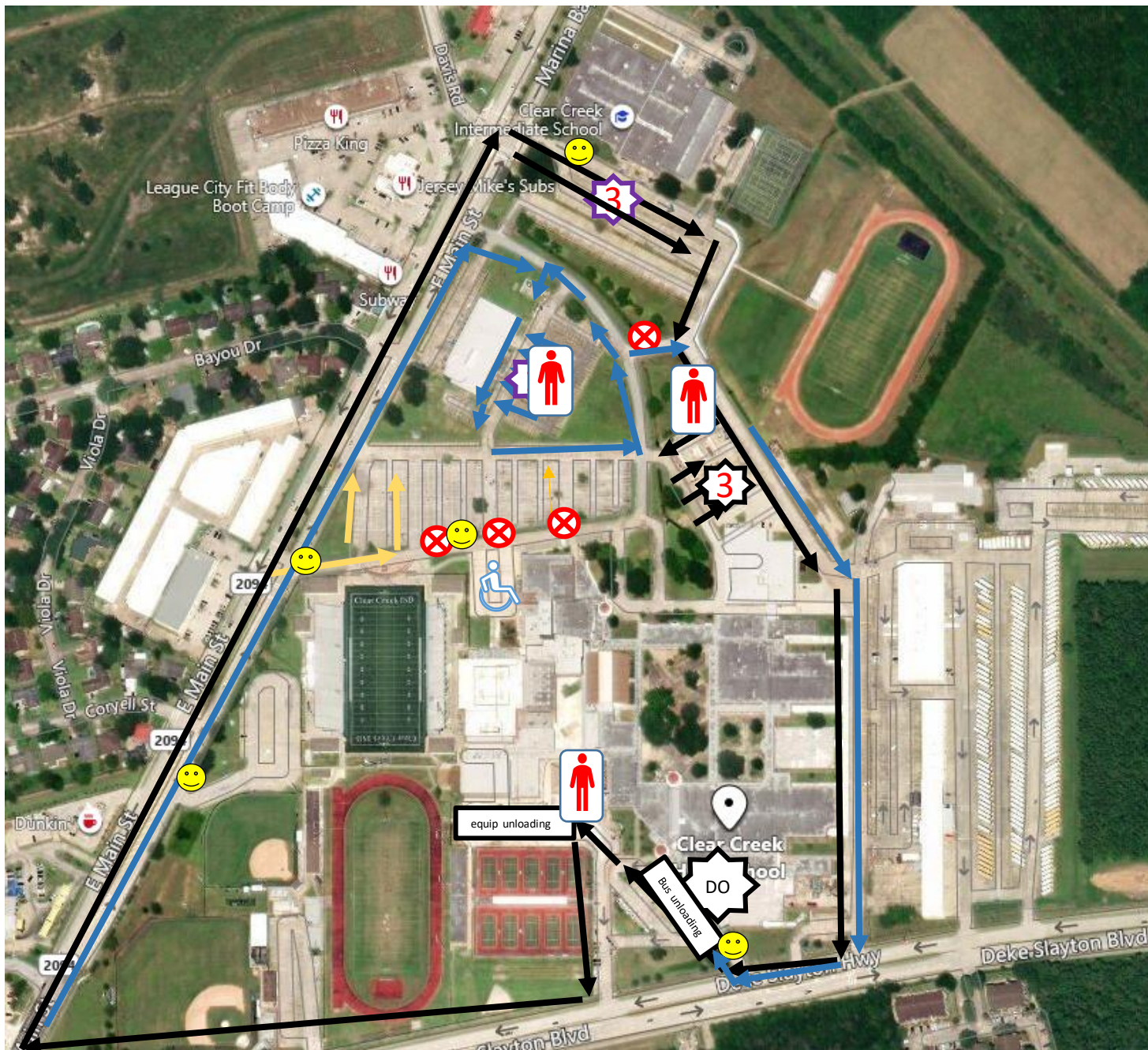
Unit check in

Performer and EQ Drop off

Performer
Props
Bus

Bus and
EQ Entrance

F.M 518



TCGCTraffic Flow



Bus parking at Admin Bldg
(Blue Route)

--Buses will drop off at the front of the school.
Then travel north on 518, turn right on 2094.
enter Bus Entrance from FM2094
just past Admin bldg., enter Admin parking lot.
Attendant to direct to parking spot.



Car Parking (Yellow Route)

Visitors to enter at Veteran's Stadium
Entrance from FM2094
Immediately turn left into parking lot
Attendant can open gate to allow
Handicapped parking in front of
Carlisle



Equipment Trucks

Equipment Trucks enter front of school
Off FM518, offload in drop off area (DO)
After drop off, turn north on FM518,
Turn Right onto FM2094
At second light, turn right in front of
Clear Creek Intermediate
Tractor Trailers will park in front of bus barn along south
End of the school bldg
Box Trucks and smaller will park by Industrial Arts bldg.



Barricade



Student Parking Attendant (yellow vest)



Handicap Parking



Adult Parking Volunteer

Bus Parking (both events) drop off points differ but parking is same



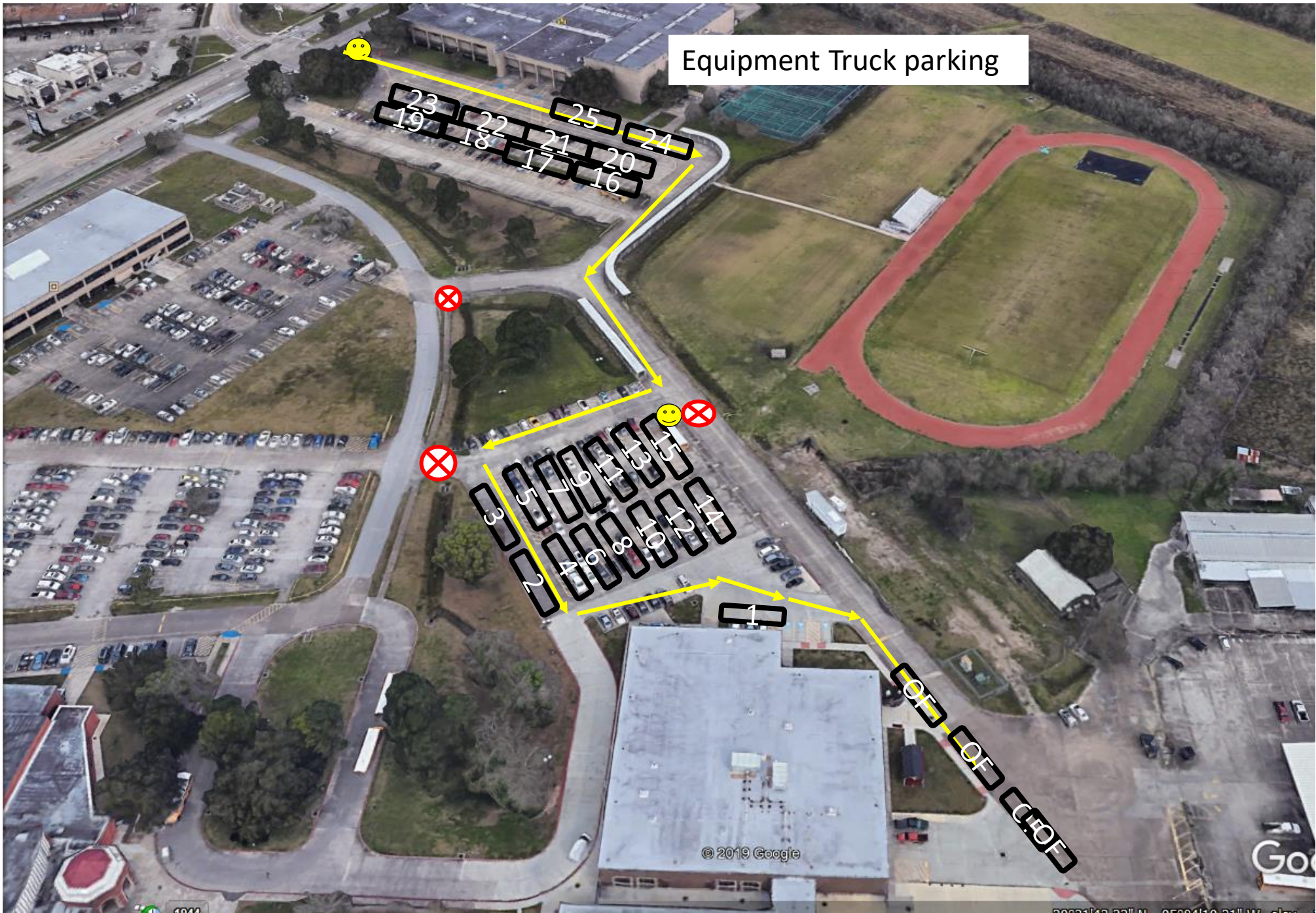
Attendant

Busses 1-15 parked using yellow route

Busses 16-20 use Blue route

Overflow busses red route

Equipment Truck parking

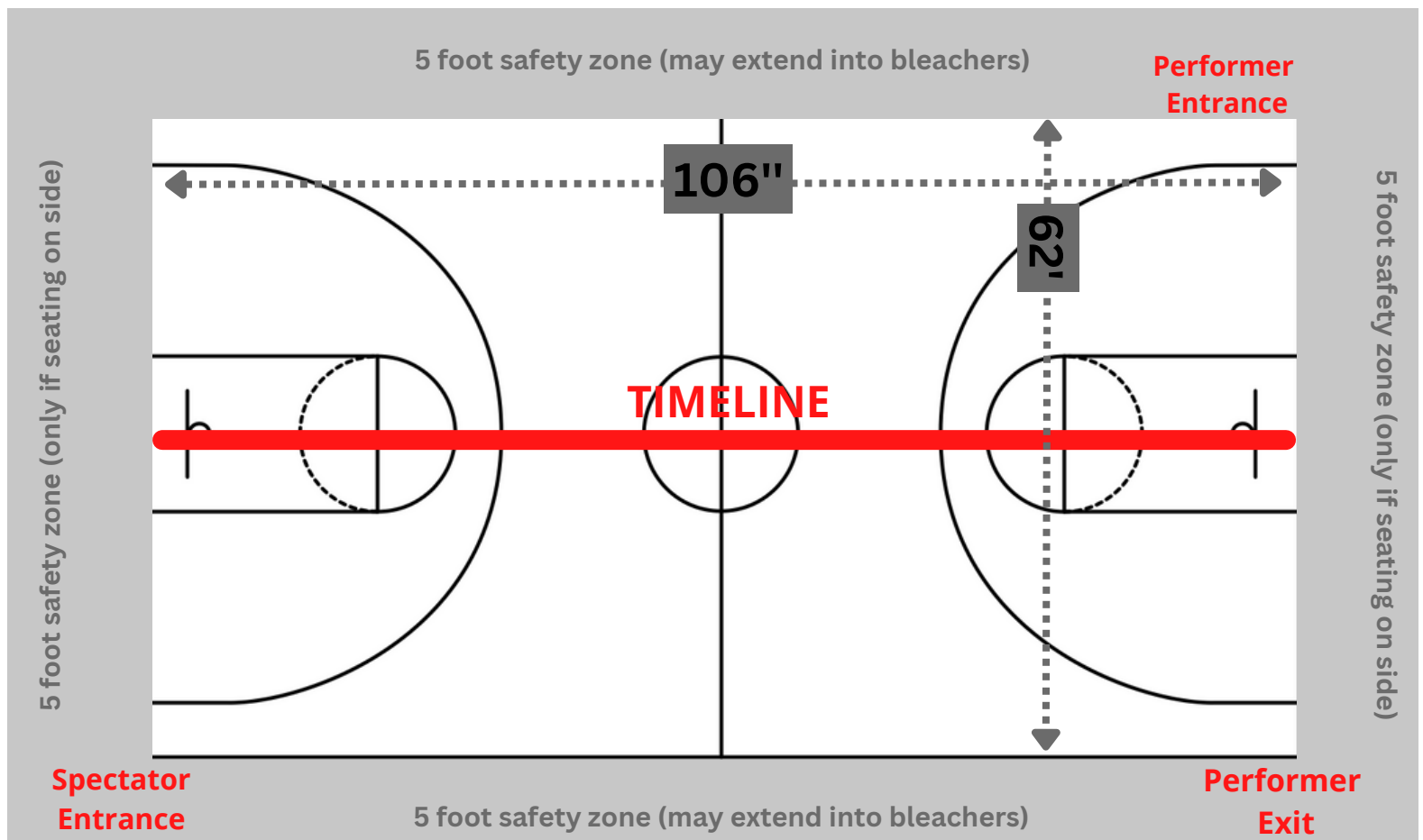




At TCGC events, we strive to provide a minimum of seventy by one hundred feet (70' X 100') to accommodate a "safety zone" of five (5) feet from any spectator seating. If no spectators are seated on the left and right sides, then the safety zone will be eliminated on the left and right sides of the competition area and can extend to a maximum of 106' X 78'.

The "competition area" at this event measures 106' X 62'. All performing groups must be prepared to perform within that area. Floors (tarps) may not extend into the safety zones per rules found in the WGI Adjudication Manual and Rulebook.

BACKSIDE SEATING



SPECTATOR SEATING