

**2022 TCGC Pasadena Memorial HS
PSAA & PSA Area Championships
Saturday, March 26
Start Time: 11:00 am**

Facility: Pasadena Memorial HS
4410 Crenshaw Rd
Pasadena, TX 77505

Ticket Prices: \$15 (fees may apply)
Online Ticket Sales ONLY

Show Contact Info:
Contest Director
Mikaila Banks
eastcd@texascolorguardcircuit.org

Show Host Contact
Holly Harris
zionworshipleader@gmail.com

Judging Panel:
M- Jeff Ausdemore
ME- Bret Cappelluti
VE- Bobby Jones
V- Bret Mascaro

TO LISTEN TO JUDGES COMMENTARY:
Each director should be set up with an account through CompetitionSuite. This is the ONLY WAY to receive judge commentary for any TCGC event.

FEES: All outstanding fees for area/championships, pull outs/no-shows, and senior medals must be paid before your unit will be able to perform at this event.

WARM-UP AREA: All maps are in this packet. Units should arrive/check-in at the time on the schedule.

RECAPS: Recaps will be available online within 24 hours of the end event.

RETREAT: The retreat for the morning groups will be captains only. The retreat for the PSAA & PSA will be a full unit, lights out retreat.

CRITIQUE: There will be two critiques- one after the morning groups, and one for the PSAA & PSA. You can sign up on the website beginning on Monday of the week of the show.

VIDEO TAPING:
TCGC will do everything possible to provide a video of each performance.

We appreciate your flexibility with the ever-changing world we live in today. We will be in close communication with the show host, and all necessary parties prior to our events, and will do our best to communicate in a timely manner any changes in circumstances surrounding our events.





We would like to welcome you to Pasadena Memorial High School. We are very excited to be hosting another TCGC Competition. We have worked very hard to ensure that your day will run as smooth as possible. Included in this packet is the flow map of the school and parking lot (please take note of Lot A (Percussion Scholastic AA and A groups) and Lot B (Scholastic Concert A, Open, World and Independent groups) entrances), and a concession stand menu. We would like to thank our directors, Mr. Harvey, Mr. Waldon, and Ms. Davis for their support of this event. Thank you to the awesome administration of Pasadena Memorial High School and the Fine Arts Directors of Pasadena Independent School District. Your support of the Fine Arts is greatly appreciated! Today would not have been possible without the help of our awesome parents! Good luck to all competing units.

Pasadena Memorial Maverick Band Booster Club

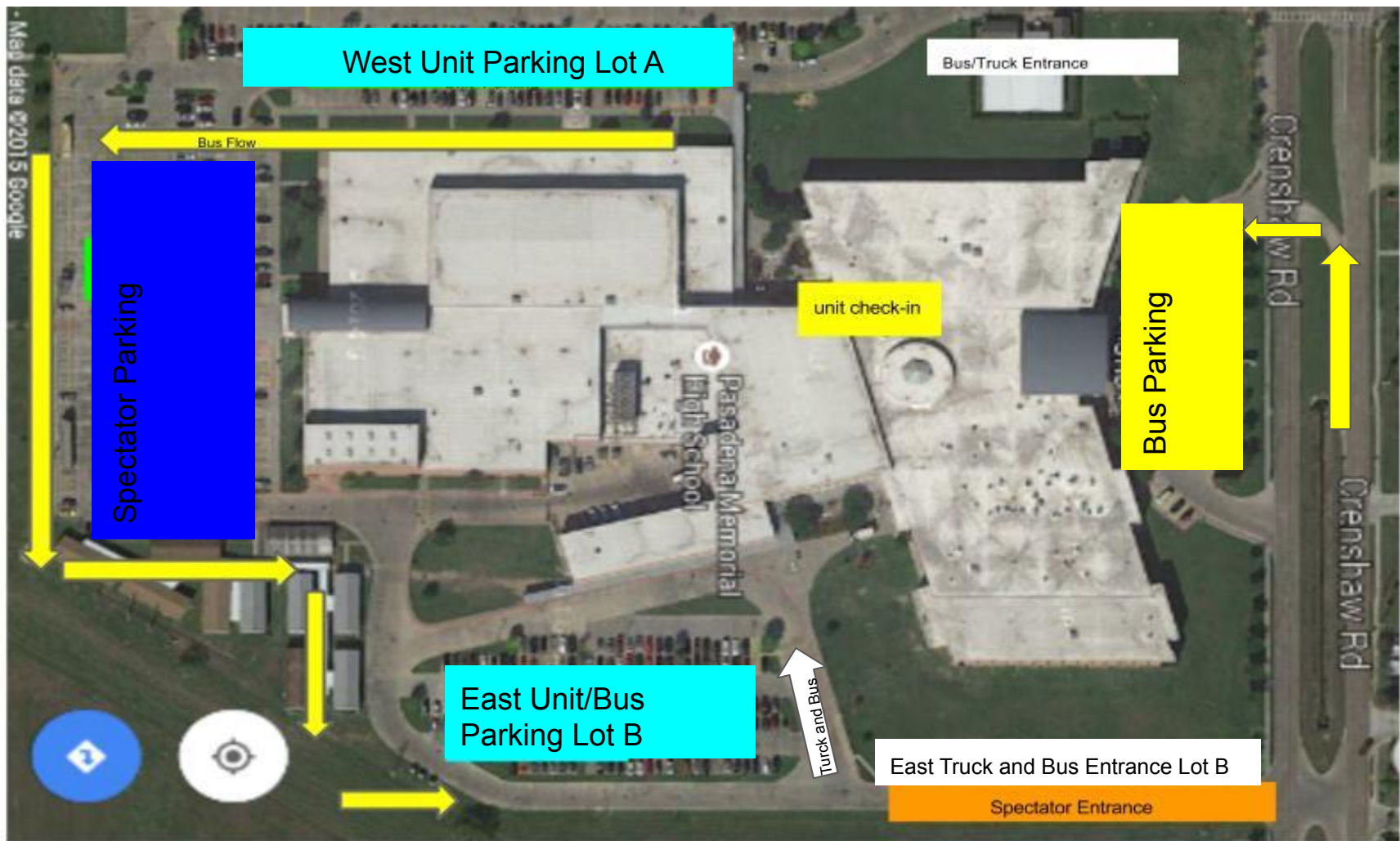
No Food or Drink is allowed in the Gym

CASH ONLY

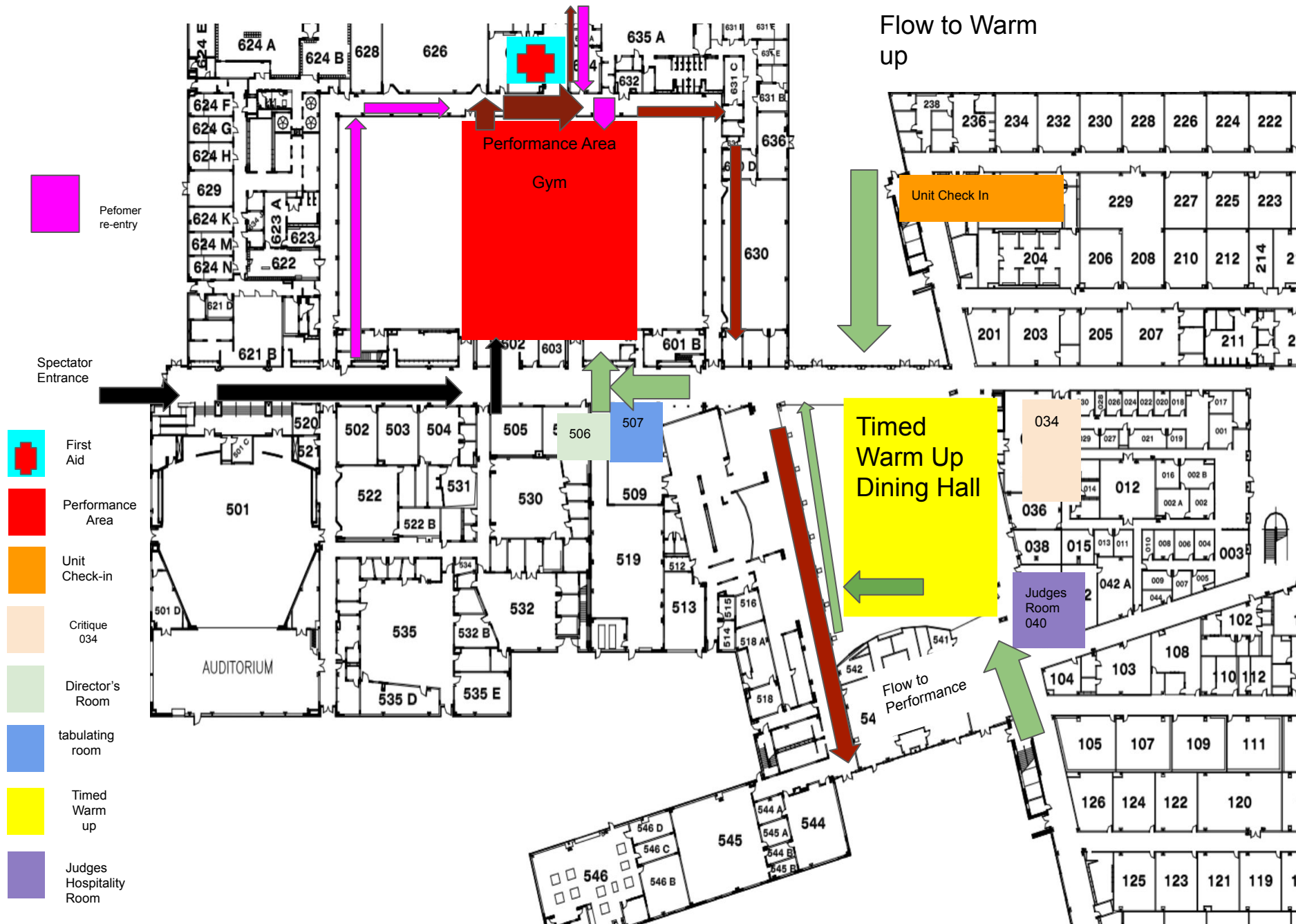
Concession Stand Menu

Service at 11am

- Chick Fil A Sandwich \$6
- Chick Fil A Combo (Sandwich, chips and drink) \$8
- Pizza (2 slices) \$3
- Pizza Combo (Slices and a drink) \$5
- Frito Pie \$3
- Nachos \$3
- Nachos with Chili \$4
- Candy \$1
- Chips \$1
- Sodas \$1
- Gatorade/Powerade \$2
- Coffee \$1



Performer Exit and Re-entry

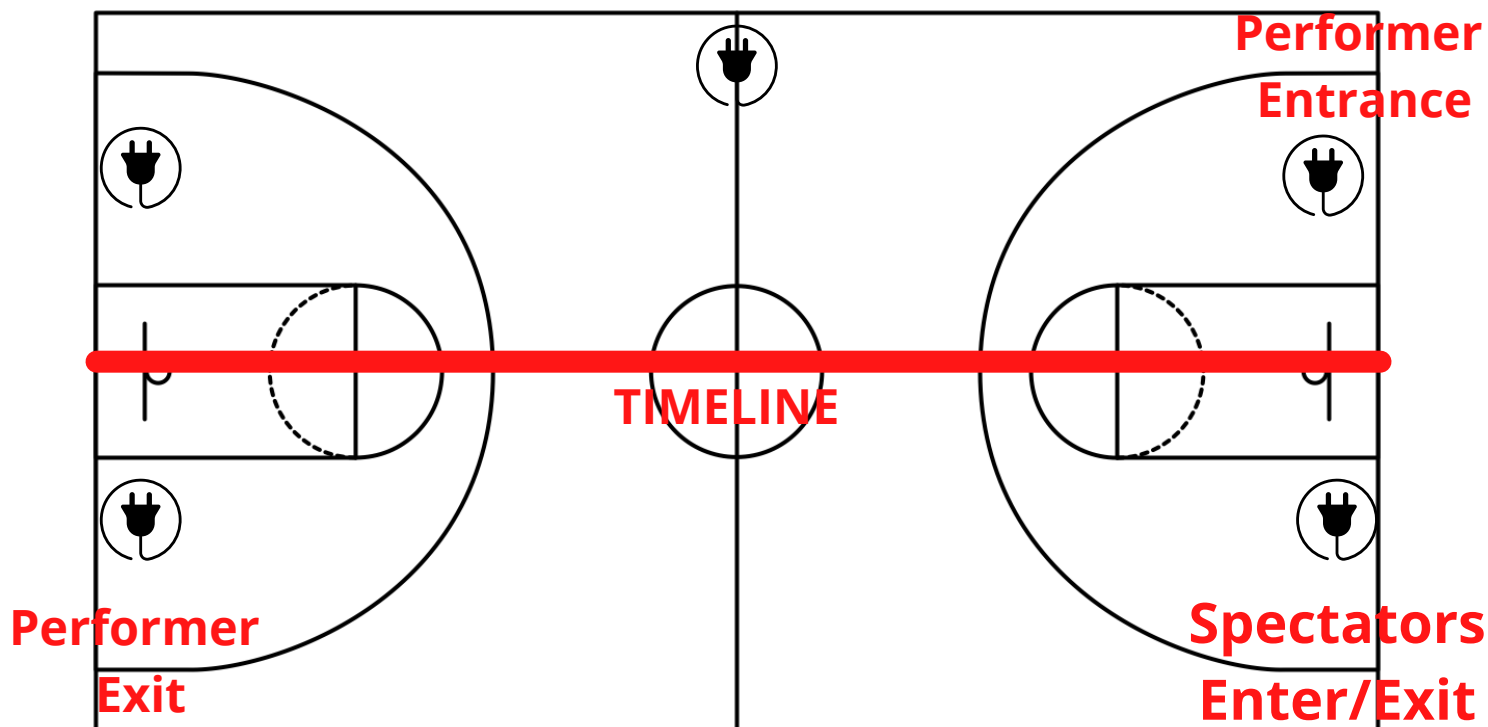




All TCGC contest sites must have a minimum of seventy by one hundred feet (70' x 100') to accommodate a "safety zone" of five (5) feet from any spectator seating. If no spectators are seated on the left and right sides, then the safety zone will be eliminated on the left and right sides of the competition area and can extend to a maximum of 106' x 78'.

The "competition area" at this event measures 110' X 67.6'. All performing groups must be prepared to perform within that area. Floors (tarps) may not extend into safety zones per rules found in the WGI Adjudication Manual and Rulebook.

Back Seating



Front Seating

 = Electric outlet