

2023 TCGC Morton Ranch Show
Saturday, February 4
Start Time: 9:00 AM

Facility: Morton Ranch High School
21000 Franz Rd
Katy, TX 77429

Ticket Prices: \$10 (fees may apply) *Online Ticket Sales*
(prior to & day of)

Show Contact Info:

Contest Director

Sara Bryant
eastcd@texascolorguardcircuit.org

Show Host Contact

Chris Brown
ChristopherMBrown@katyisd.org

Judging Panels:

Color Guard

EQ Doug Henderson (LJ)
MV John Leonard
DA Scott Montoya
GE Mike Pavlock
GE Sandra Bertelle
Overview Joe Cataneo

TO LISTEN TO JUDGES

COMMENTARY: Each director should be set up with an account through CompetitionSuite. This is the ONLY WAY to receive judge commentary for any TCGC event.

SOUND TESTING: One hour prior to the start of the contest and during breaks at the discretion of the contest director.

WARM-UP AREA: All maps are in this packet. Units should arrive/check-in at the time on the schedule. Please be prepared to provide your own sound equipment in the warm-up facilities.

RECAPS: Recaps will be available online within 24 hours of the end event.

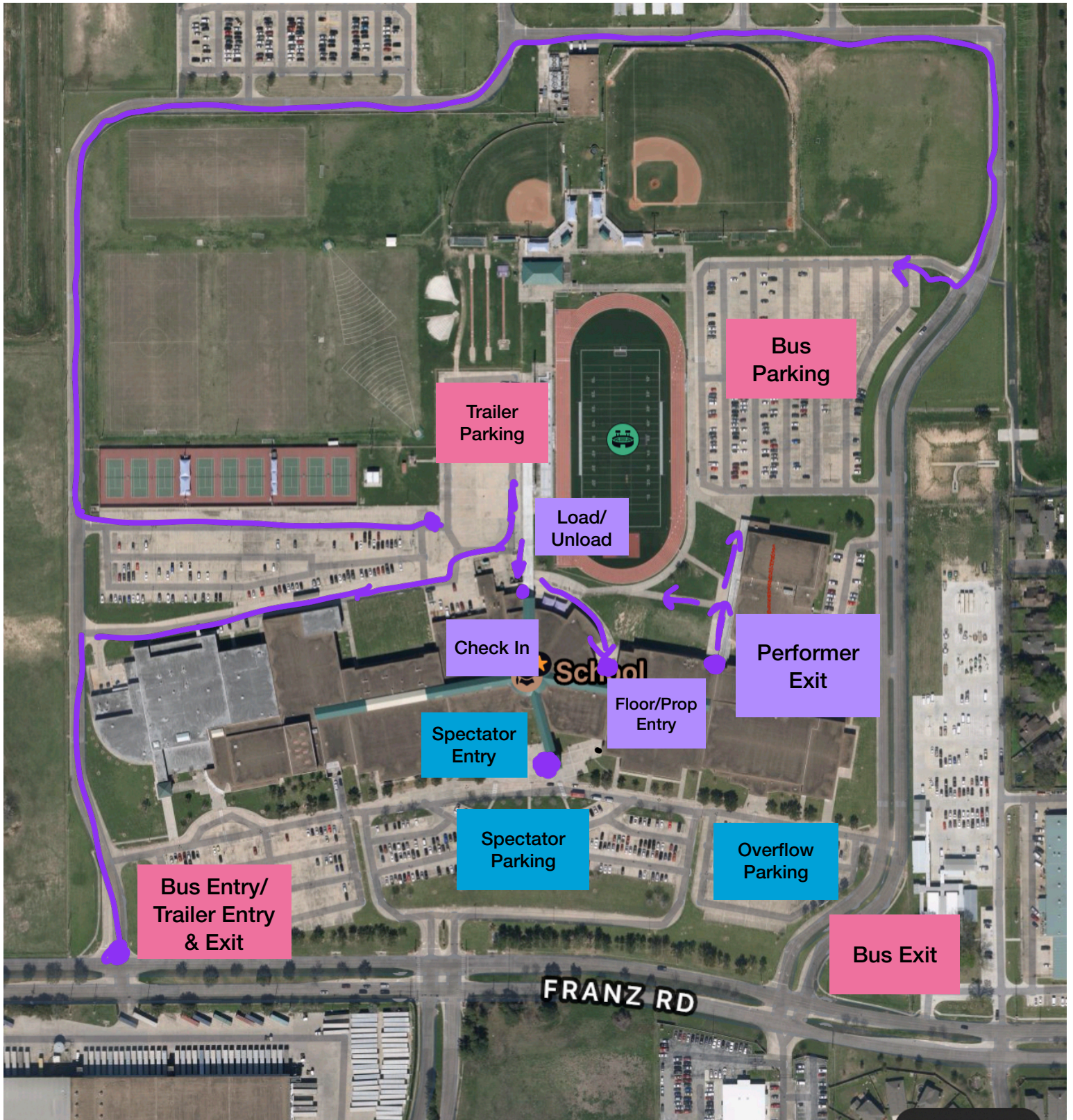
CRITIQUE: There will be “The Day After” Critique opportunity. Details came out in an email for you to sign up for this. Limited spots available.

RETREAT: There will be captain’s only retreat(s) throughout the day as notated on the schedule.

VIDEO TAPING: TCGC will do everything possible to provide a video of each performance.

We appreciate your flexibility with the ever-changing world we live in today. We will be in close communication with the show host, and all necessary parties prior to our events, and will do our best to communicate in a timely manner any changes in circumstances surrounding our events.



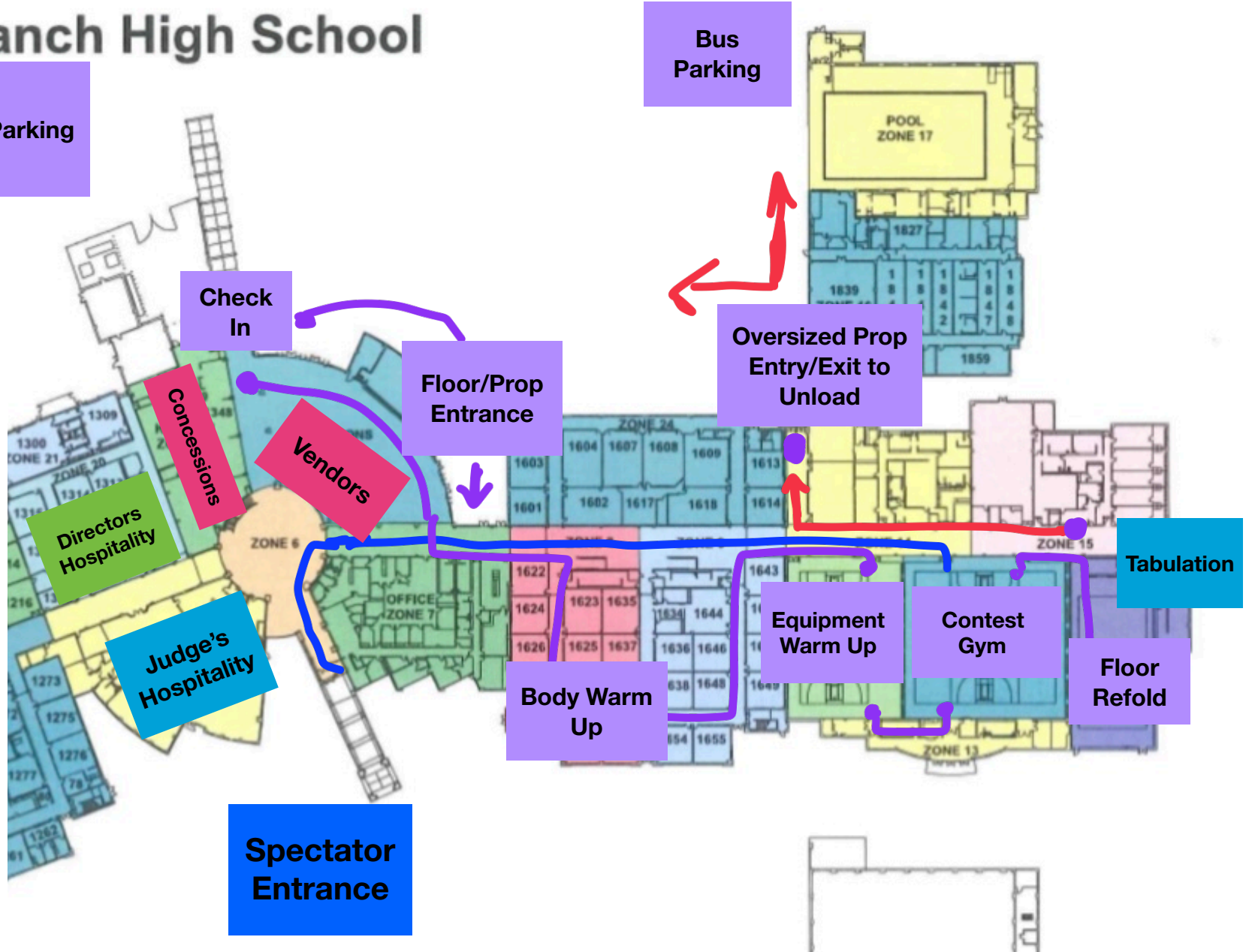


Morton Ranch High School

Truck Parking

Bus Parking

First Floor

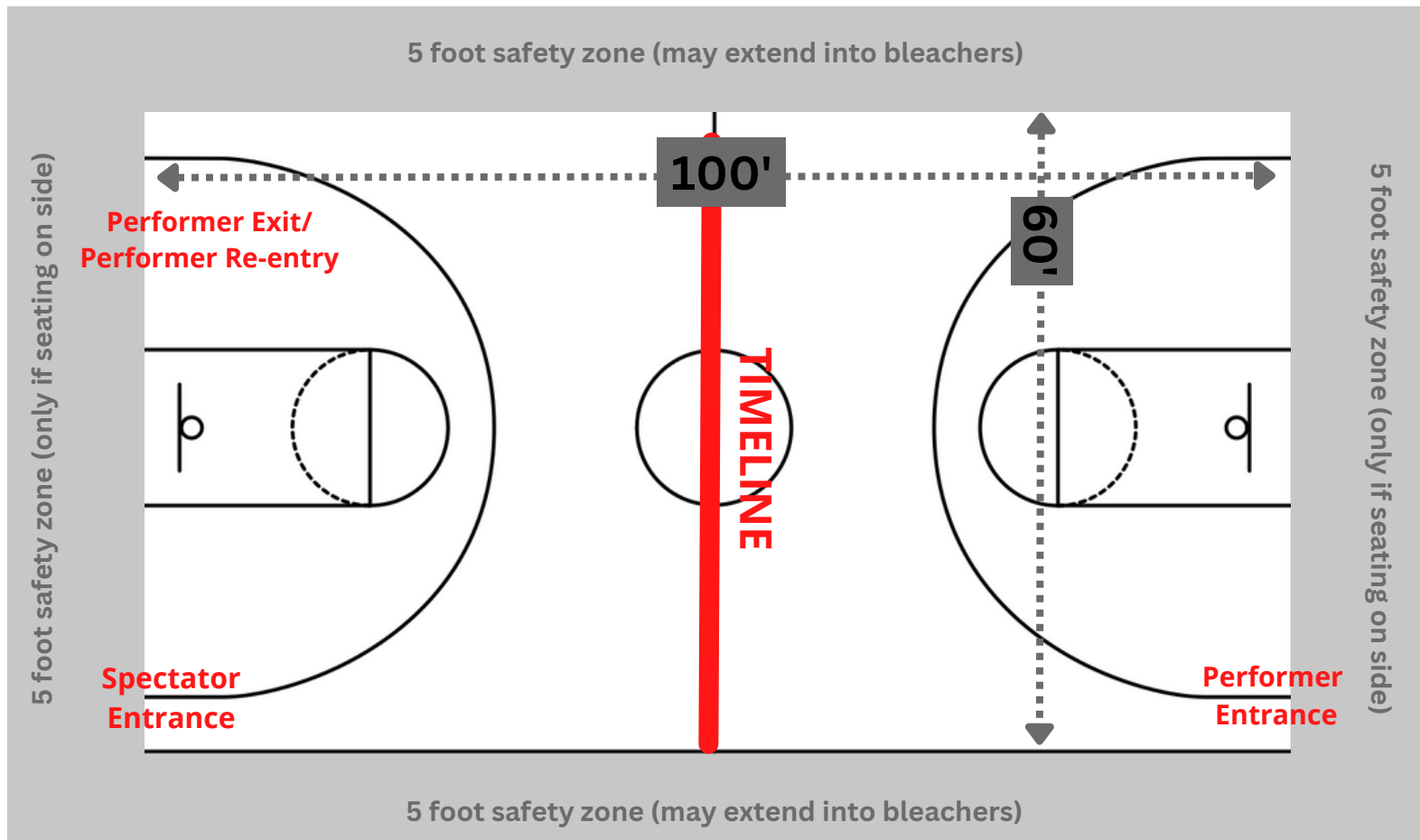




At TCGC events, we strive to provide a minimum of seventy by one hundred feet (70' X 100') to accommodate a "safety zone" of five (5) feet from any spectator seating. If no spectators are seated on the left and right sides, then the safety zone will be eliminated on the left and right sides of the competition area and can extend to a maximum of 106' X 78'.

The "competition area" at this event measures 100' X 60'. All performing groups must be prepared to perform within that area. Floors (tarps) may not extend into the safety zones per rules found in the WGI Adjudication Manual and Rulebook.

BACKSIDE SEATING



SPECTATOR SEATING

Body Warm-up



Equipment Warm-up



Performance Gym

