

2023 TCGC Willis HS
Saturday, January 21
Start Time: TBD

Facility: Willis High School
10005 TX-75
Willis, TX 77378

Ticket Prices: \$10 (fees may apply)
Online Ticket Sales
Cash & Credit accepted on site

Show Contact Info:

Contest Director

Kellie Whitley
eastcd@texascolorguardcircuit.org

Show Host Contact

Joseph Dittfurth
jdittfurth@willisisd.org

Judging Panels:

Color Guard

EQ TBD
MV TBD
DA TBD
GE TBD
GE TBD

TO LISTEN TO JUDGES COMMENTARY:

Each director should be set up with an account through CompetitionSuite. This is the **ONLY WAY** to receive judge commentary for any TCGC event.

SOUND TESTING: One hour prior to the start of the contest and during breaks at the discretion of the contest director.

WARM-UP AREA: All maps are in this packet. Units should arrive/check-in at the time on the schedule. Please be prepared to provide your own sound equipment in the warm-up facilities.

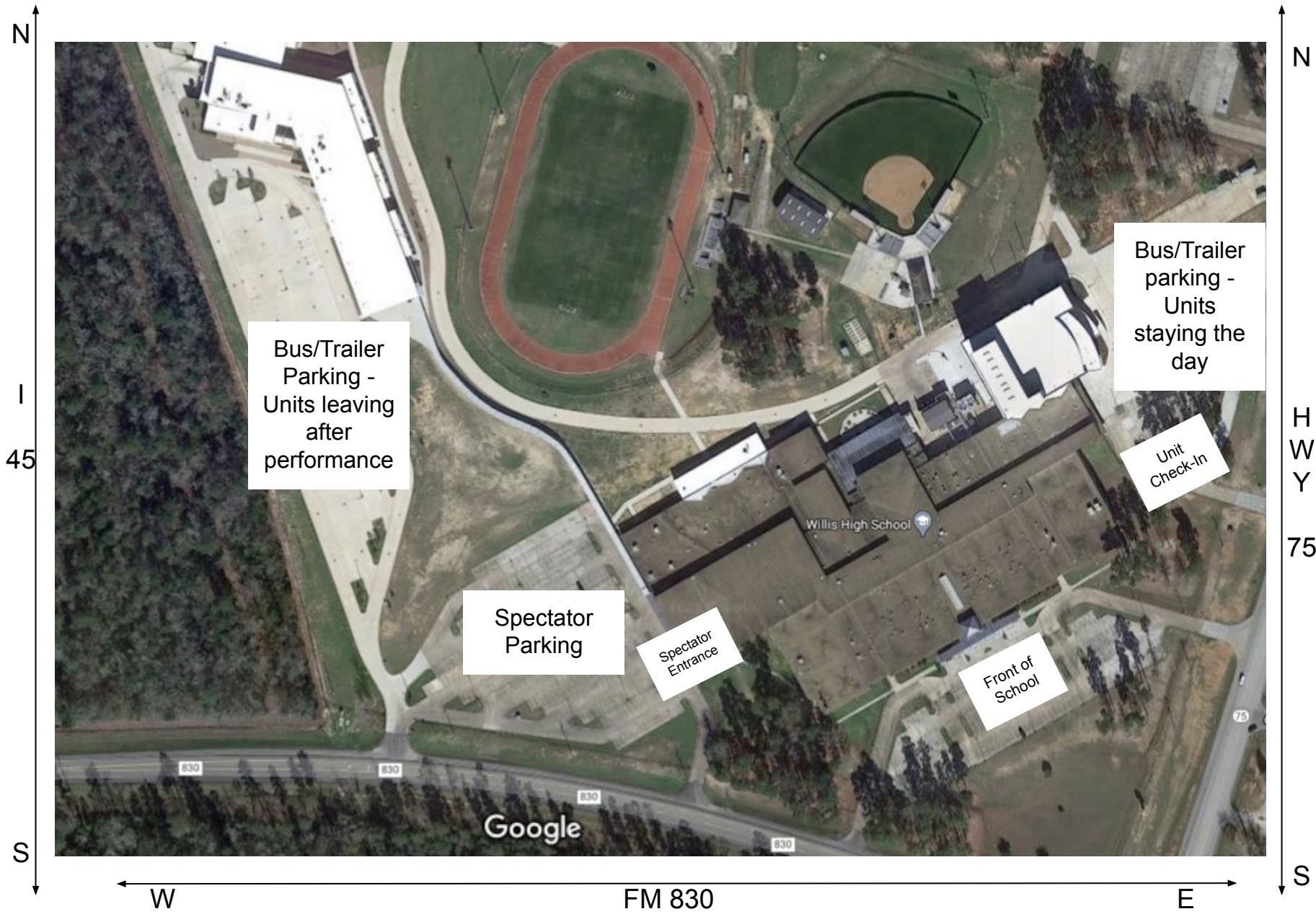
RECAPS: Recaps will be available online within 24 hours of the end event.

RETREAT: There will be captain's only retreat(s) throughout the day as notated on the schedule.

VIDEO TAPING: TCGC will do everything possible to provide a video of each performance.

We appreciate your flexibility with the ever-changing world we live in today. We will be in close communication with the show host, and all necessary parties prior to our events, and will do our best to communicate in a timely manner any changes in circumstances surrounding our events.





Bus/Trailer
Parking -
Units leaving
after
performance

Bus/Trailer
parking -
Units
staying the
day

Unit
Check-in

Spectator
Parking

Spectator
Entrance

Front of
School

Willis High School

830

830

830

830

Google

FM 830

H
W
Y
75

N

I

45

S

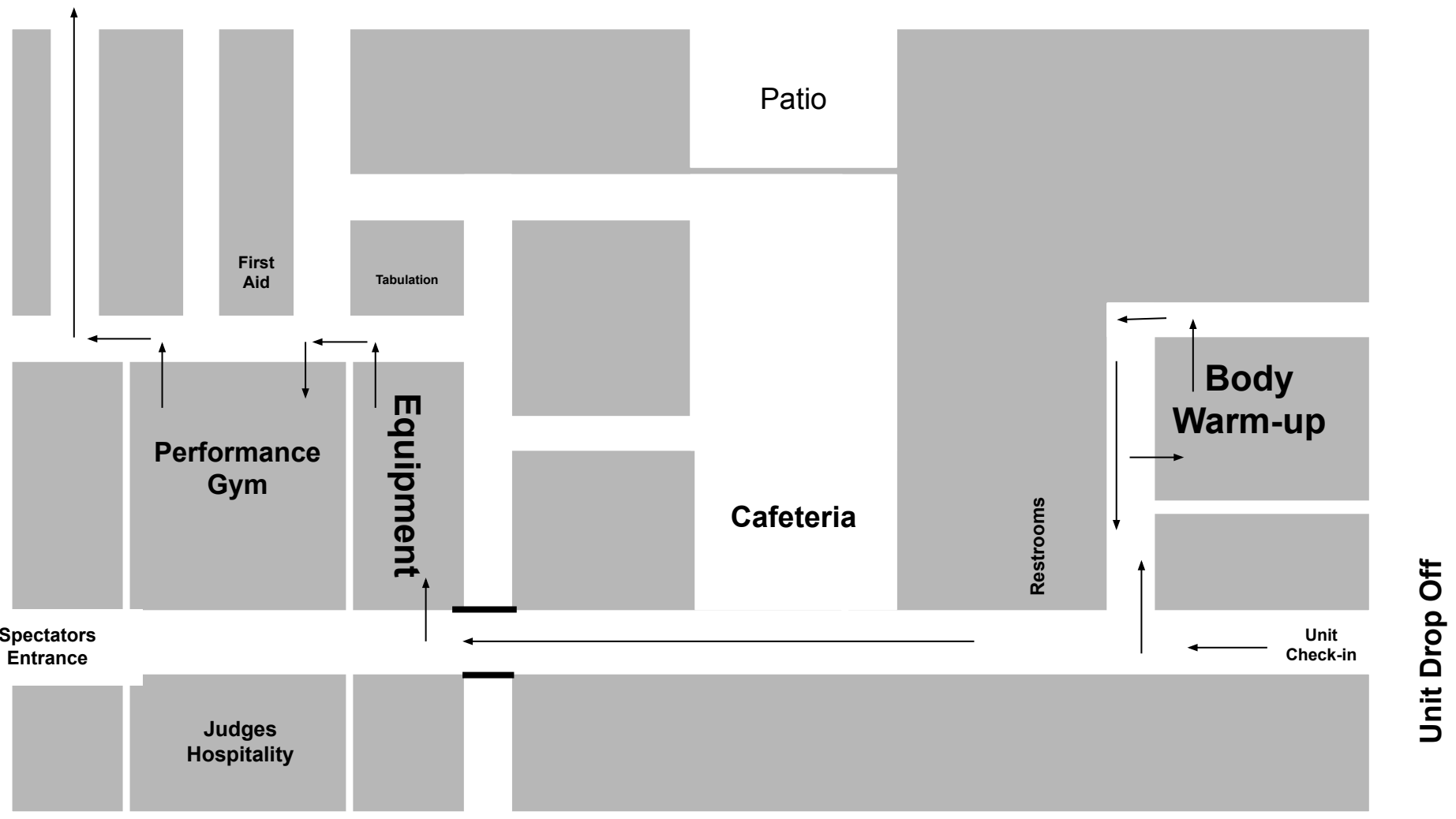
W

E

S

TCGC - Willis HS Performance Layout 3.5.22

Buses/Trucks in
CTE Parking Lot



Unit Drop Off

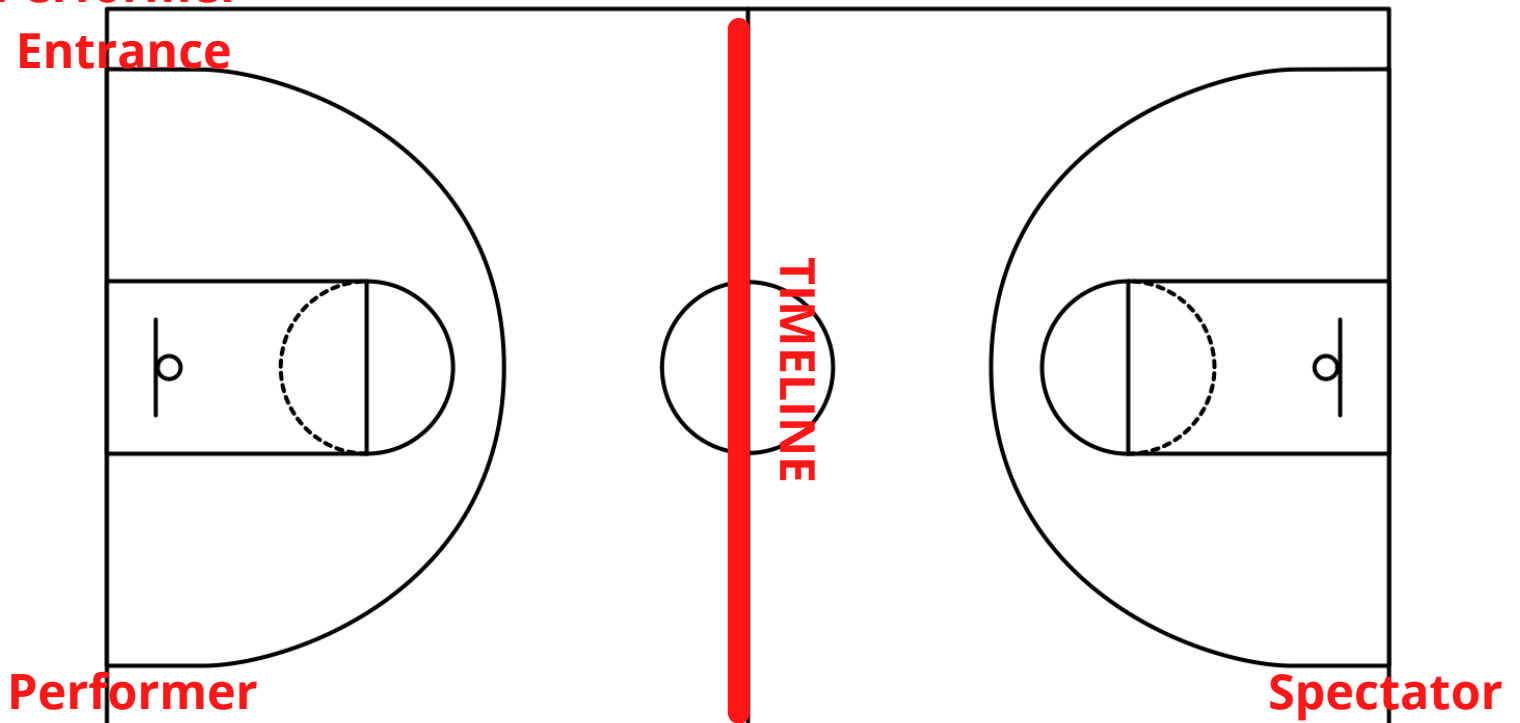
Unit Check-in



All TCGC contest sites shall have a minimum of 70' x 100' to accommodate a "safety zone" of five (5) feet from any spectator seating. If no spectators are seated on the left and right sides, then the safety zone will be eliminated on the left and right sides of the competition area and can extend to a maximum of 78' x 106.'

The venue space at this event measures 69' X 110.' All performing groups must be prepared to perform within that area. Floors (tarps) may not extend into safety zones per rules found in the WGI Adjudication Manual and Rulebook.

**Performer
Entrance**



**Performer
Exit**

**Spectator
Entrance**

Front Seating