

2022 TCGC Davenport HS
Cadet, Novice, SJV Championships
Saturday, March 12
Start Time: Perc: 9:00 am/CG 10:32 am

Facility: Davenport HS
23255 FM 3009
San Antonio, TX 78266

Ticket Prices: \$10 (fees may apply)
Online Ticket Sales
Cash, Check & Credit accepted on site

Show Contact Info:
Contest Director
Chelsea Crochet
westcd@texascolorguardcircuit.org

Show Host Contact
Jeffrey Keyes
jeffrey.keyes@comalisd.org

Judging Panels:

Color Guard

EQ Joel Dube
MV Charles Brown (LJ)
DA Kyle Coleman
GE Mike Lopinto
GE Kendall LeJeune

Percussion

M Rick Rodriguez
ME Teddy Mascari
VE Ken Giese
V Ron Hardin

TO LISTEN TO JUDGES COMMENTARY:

Each director should be set up with an account through CompetitionSuite. This is the ONLY WAY to receive judge commentary for any TCGC event.

FEES: All outstanding fees for area/championships, pull outs/no-shows, and senior medals must be paid before your unit will be able to perform at this event.

SOUND TESTING: One hour prior to the start of the contest and during breaks at the discretion of the contest director.

WARM-UP AREA: All maps are in this packet. Units should arrive/check-in at the time on the schedule. Please be prepared to provide your own sound equipment in the warm-up facilities.

RECAPS: Recaps will be available online within 24 hours of the end event.

RETREAT: For morning percussion & SAA guard units, we will do a combined captains only retreat. For the Championships portion of the event, we will do a FULL GUARD retreat at the end of the day.

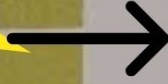
CRITIQUE: There will be a percussion critique following the last unit's performance.

VIDEO TAPING: TCGC will do everything possible to provide a video of each performance.

We appreciate your flexibility with the ever-changing world we live in today. We will be in close communication with the show host, and all necessary parties prior to our events, and will do our best to communicate in a timely manner any changes in circumstances surrounding our events.



**Restrooms
available
at Stadium**



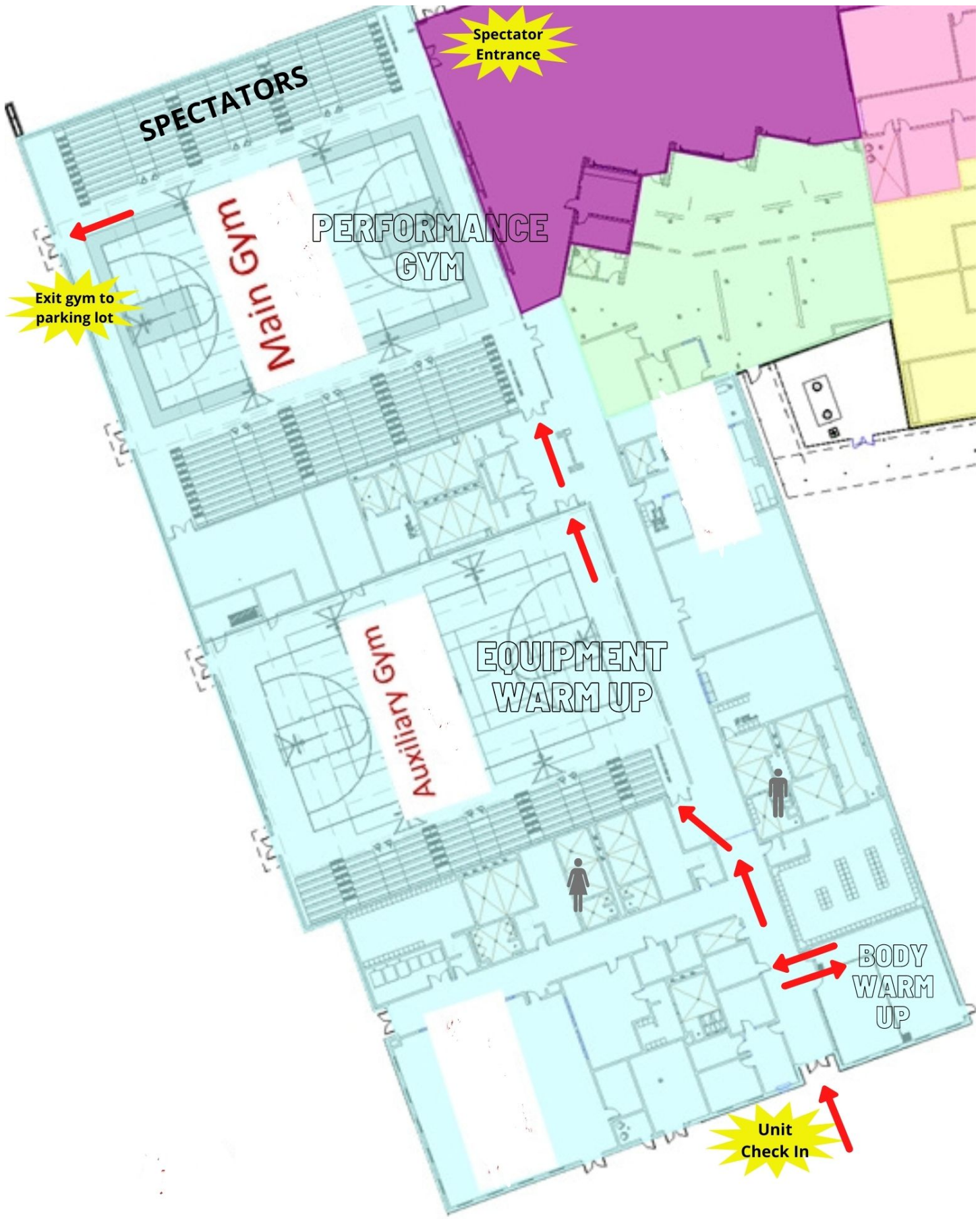
BUS AND TRUCK PARKING

**Unit
Check-In**

**SPECTATOR
PARKING**

**Spectator
Entrance**





Spectator Entrance

SPECTATORS

PERFORMANCE GYM

Main Gym

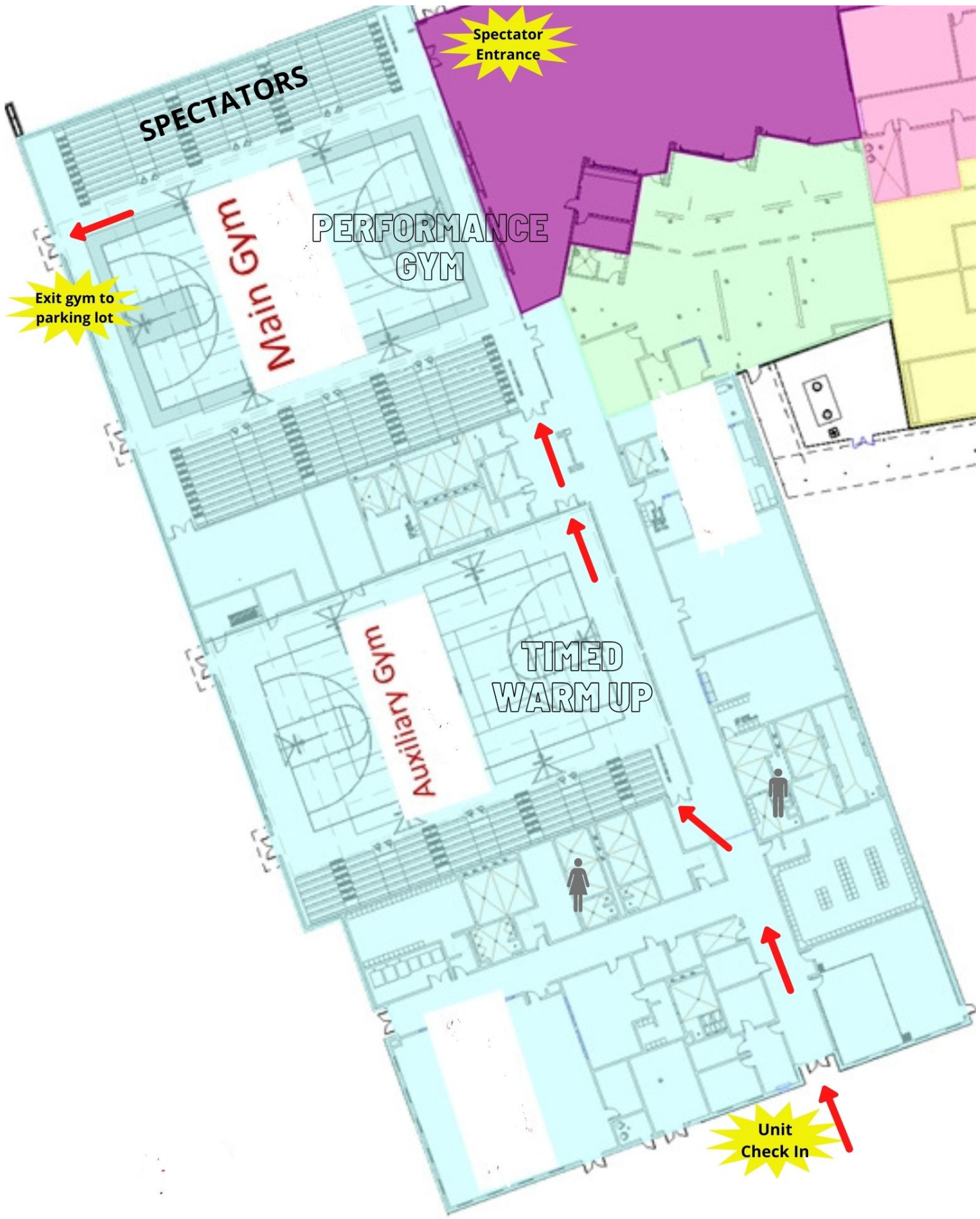
Exit gym to parking lot

Auxiliary Gym

EQUIPMENT WARM UP

BODY WARM UP

Unit Check In



Spectator Entrance

SPECTATORS

PERFORMANCE GYM

Main Gym

Exit gym to parking lot

Auxiliary Gym

TIMED WARM UP

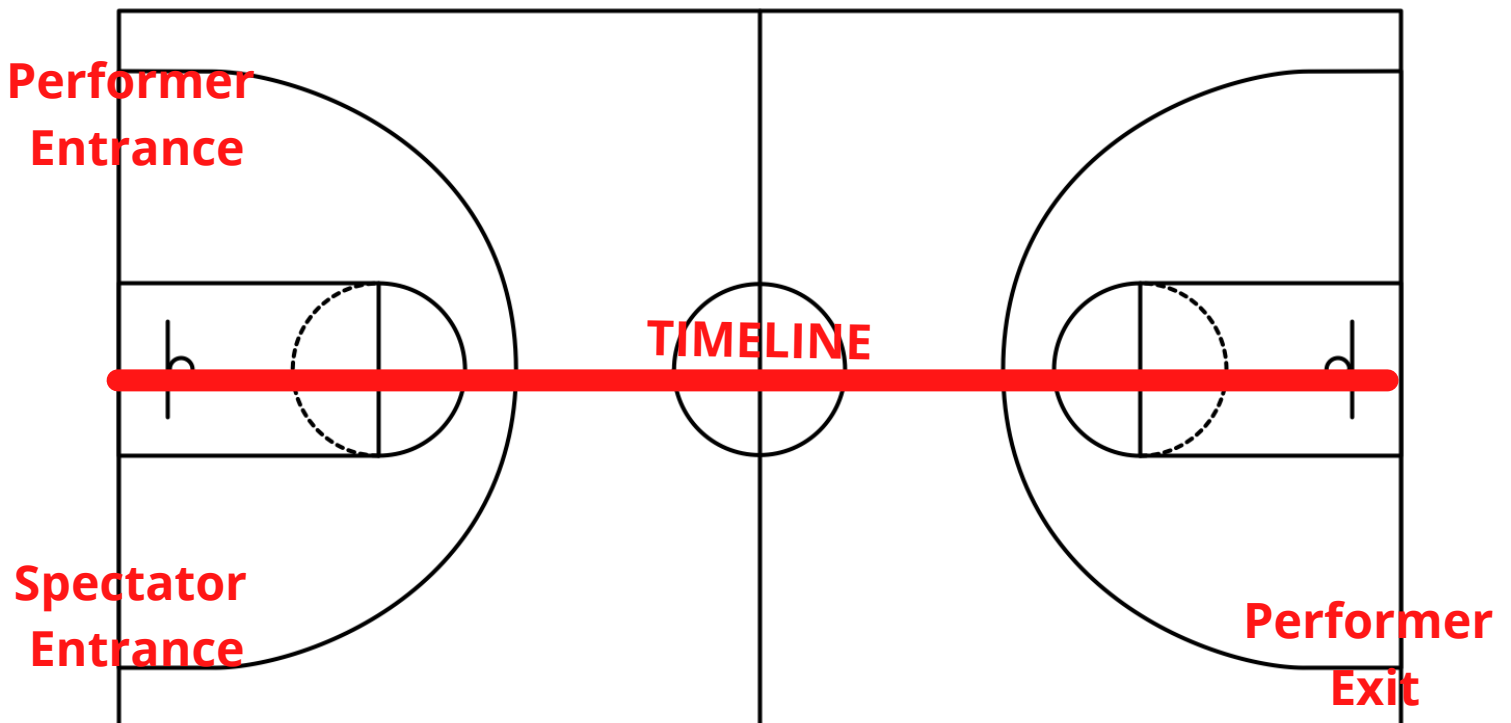
Unit Check In



All TCGC contest sites must have a minimum of seventy by one hundred feet (70' x 100') to accommodate a "safety zone" of five (5) feet from any spectator seating. If no spectators are seated on the left and right sides, then the safety zone will be eliminated on the left and right sides of the competition area and can extend to a maximum of 106' x 78'.

The "competition area" at this event measures 116' X 75.' All performing groups must be prepared to perform within that area. Floors (tarps) may not extend into safety zones per rules found in the WGI Adjudication Manual and Rulebook.

Back Seating



Front Seating





