



Division 3A Class
Championship
Campo Verde High School
presented by



TO: AzMBA Bands

FROM: Championship Committee

RE: Arizona Marching Band Association Championships presented by Yamaha

On behalf of AzMBA, we would like to welcome you to the 2019 Championship event. We are excited to change the event this year to a class championship followed by a Grand Championship event hosted by Mesa Community College! Campo Verde High School is once again hosting Division 3A. Thank you for joining us this year and being a part of the success of AzMBA.

Enclosed is your packet containing **IMPORTANT** competition information and a map of the campus. We ask that each director and instructor help us in making this event successful in all aspects. Your assistance is appreciated in any way you can help. **AZMBA** recommends you review the packet for show flow and information about Championships. **UNLOADING, PARKING AND LOADING INSTRUCTIONS ARE CRITICAL!!!!**

Please share this packet with your parent supporters, bus drivers, truck drivers and staff. Each of them is recognized by us as vital to a wonderful experience for all students!

If you have any questions, feel free to contact us at the phone numbers listed below.

Again, thank you for attending, we anticipate a full day of fun and champion performances! Leave it all on the field!

Sincerely,
Championship Committee

Emergency contact: **Matt Kozacek – AzMBA President** 480-234-9158 (cell)
Taylor Mitchell – AzMBA Championship Committee 505-604-4773 (cell)
Rebecca Kapp – CV Band Booster President 602-561-5147 (cell)

LOCATION

Campo Verde High School,
3870 S Quartz St
Gilbert, AZ 85297

DIRECTIONS

Campo Verde High School is on the north side of the street located at Germann Rd and 150th St; Spectator parking is north of the school buildings and east of the stadium.

TICKET PRICES

\$15.00 (5 and under free)
\$8.00 Student (w/ID)/Senior

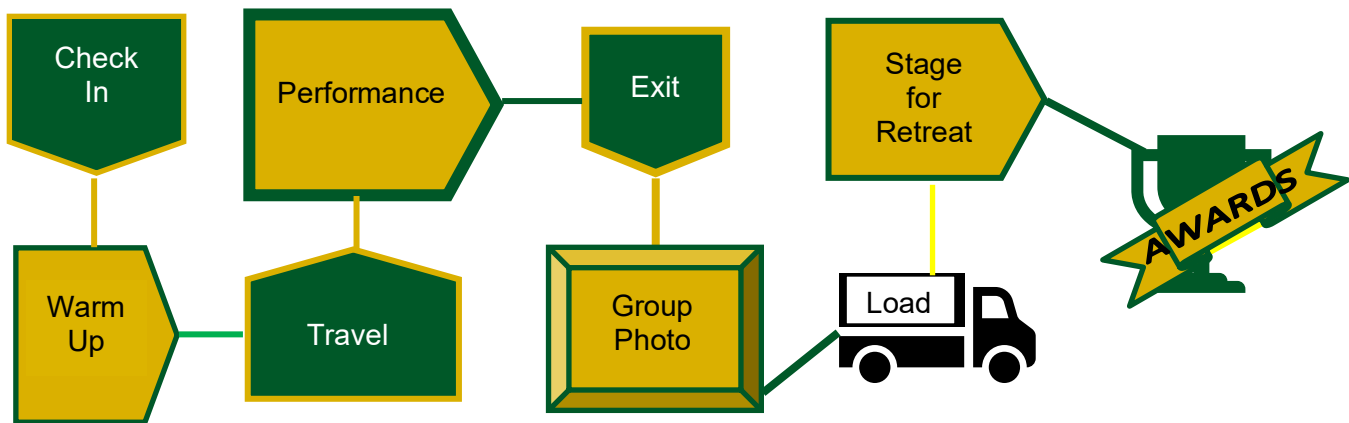
BUS ENTRANCE

Unit buses & trucks will enter the campus from Germann Rd. on Coyote Dr. See map for drop off and continue around parking instructions.

FULL RETREAT TIMES – I & E SHOWCASE

I & E Showcase will be 15 minutes after the last performance. I & E participants from the season will be selected for this showcase and notified by AzMBA.

Full retreat awards ceremony will be 15 minutes after I & E Showcase. All band members participate in full retreat in uniform.



Please familiarize yourself with the map and flow before your scheduled timeslots. You will be responsible to get your unit to the areas necessary prior to and including performance.

BAND CHECK-IN: Check in will be on the west side of the school, marked on the map.

PASSES: Units have their Director and Staff Badges that were distributed for the season. Performer/Field Pass wristbands will be distributed at Unit Check In. Bands receive 15 Field Pass wristbands. *If you need additional field passes, they may be purchased at the ticket booth.* Each director will receive 15 passes/wristbands for field/entrance. If you need additional PIT CREW passes, you may get them BUT, a PIT CREW pass will NOT allow entrance to the show – a regular entrance wristband must be purchased at the ticket window.

Your Hosts, Campo Verde Boosters, have remembered your bus drivers with a meal and entrance ticket!

WATER STATIONS: Water stations are marked on the map. PLEASE bring additional water for your band members and stay hydrated.

SPECTATOR PARKING: Spectators will enter the campus from Germann Rd, turn in on Quartz Dr and park on the north side of campus.

SPECTATOR ENTRANCE TO THE STADIUM: Spectator entrance to the stadium is on the southwest corner of the football field. The ticket window is at the southwest corner of the stadium.

EQUIPMENT UNLOADING: Trucks enter on Coyote Drive – follow the map for unloading and parking. Follow parking attendant direction/instruction.

BUS UNLOADING/CHECK IN: Buses enter on Coyote Drive – follow the map for unloading. Follow parking attendant direction/instruction.

MERCHANDISE & CONCESSION VENDORS: Will be available in the spectator entrance area and on the north end of the stadium.

CHAMPIONSHIP PROGRAMS: Will be for sale in the spectator entrance area.

HOSPITALITY: A Hospitality area will be available for directors and staff during the competition. This area, located in the north end of the track, is for staff and directors only. Please no parents or bus drivers.

WRISTBANDS: Wristbands must be worn by everyone, in order to enter the stadium. AzMBA provides staff badges. (Performers in uniform will be allowed to enter stadium) Your crew/volunteers will be checked at the entrance by Event Staff.



Each director will receive 15 passes/wristbands for field/entrance. If you need additional PIT CREW passes, you may get them BUT, a PIT CREW pass will NOT allow entrance to the show – a regular entrance wristband must be purchased at the ticket window.

PERFORMANCE FLOW: Please see attached maps for performance flow on and off the field.

PHOTOGRAPHY: Group photos will be taken by LifeTouch after each band's performance. Please follow volunteer event staff directions where to go for photos before loading.

AWARD CEREMONIES: There will be a full retreat, uniforms required, award ceremony.

- Every band must be in their performance uniform (shakos optional) for the uniformed full retreat.
- Please look at the retreat flow in your CHECK IN packet
- Instruments and props are optional
- Bands will need to move to their assigned staging areas after the final performance.
- Drum Majors will meet with volunteers in the assigned staging area for instruction.
- Please have Seniors in the front section of the band – they will be recognized during the award ceremony.
- Please be courteous to remaining bands performing on the field.

Please look at the retreat instructions and flow for staging information and placement in the following pages.

Remember our season Sponsors:

Title Sponsor - Yamaha
Title Sponsor - Marching Apparel

Championship Sponsor – Creative Costuming
Championship Sponsor – Dinkles

Circuit Sponsor - Stanbury
Circuit Sponsor – Instrumental Music Center

Caption Sponsor - Innovative Percussion



CAMPUS MAP

Full Retreat
Staging Area

Equipment Truck
Parking

Bus Parking off Campus
@ Church

COYOTE DRIVE

Entrance
Pit

Entrance
Winds

Spectator Parking

Checkin

Warmup
Area A

Warmup
Area B
Campus
High School

Warmup
Area C

Warmup

Warmup

To Spectator Parking

Bus/Truck Entry
E Germann Rd
Google

Spectator Entry
E Germann Rd

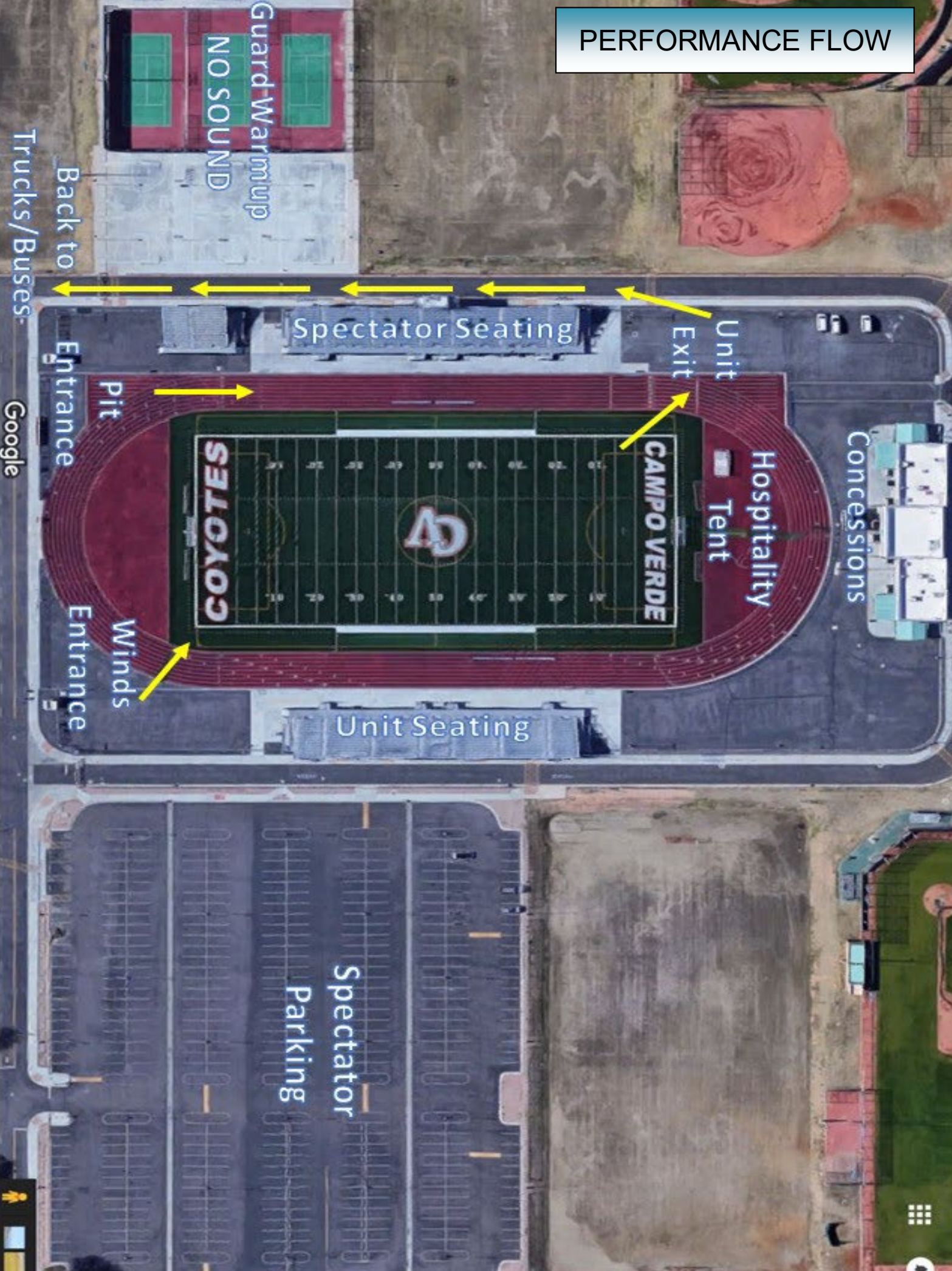
S Quartz St

S 150th St

E C

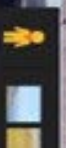


PERFORMANCE FLOW



Back to Trucks/Buses

Google



Guard Warmup
NO SOUND

Spectator Seating

Unit Exit

Hospitality Tent

Concessions

Pit

Entrance

SELOYOOC

CAMPO VERDE



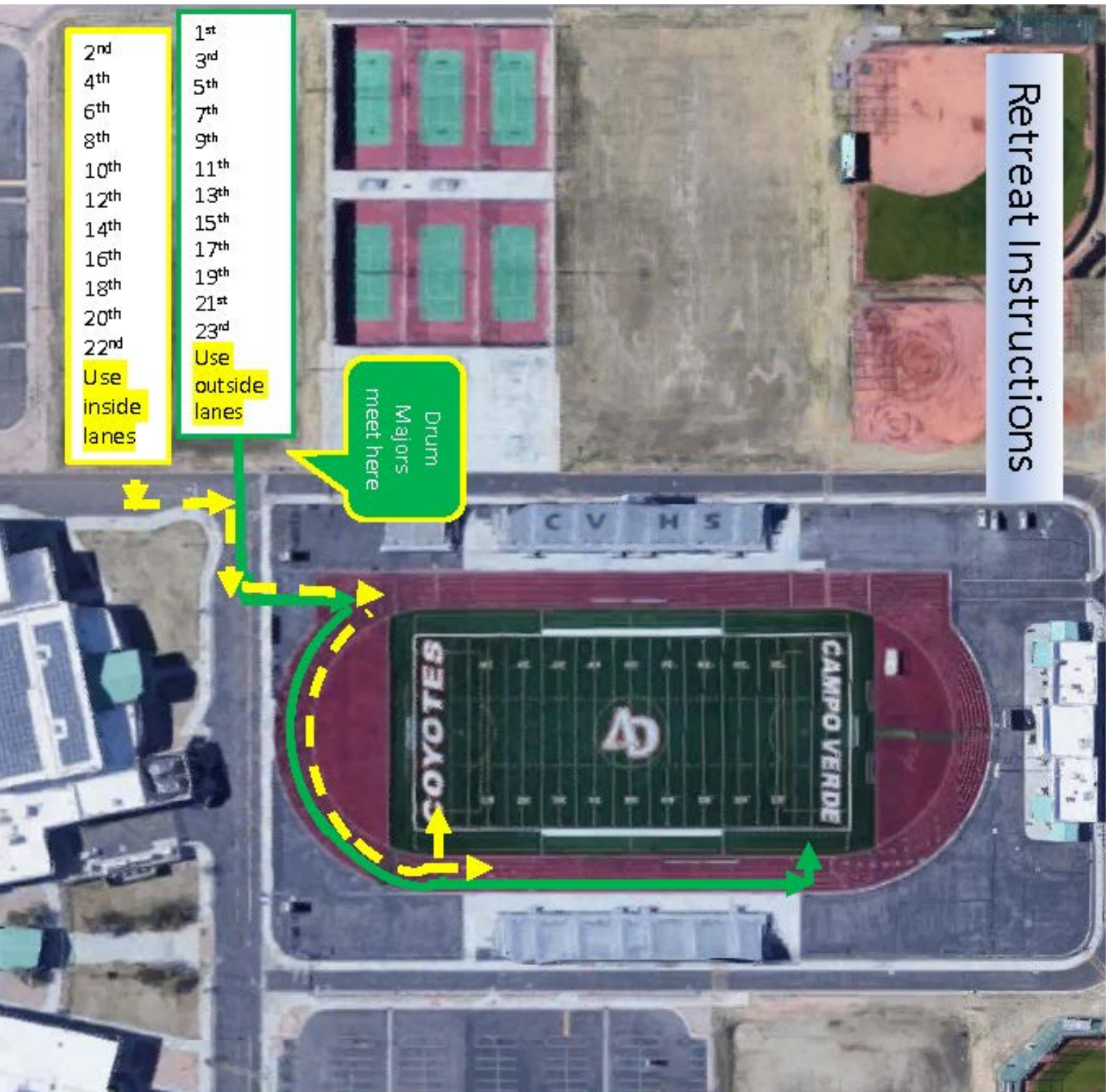
Winds

Entrance

Unit Seating

Spectator Parking

Retreat Instructions

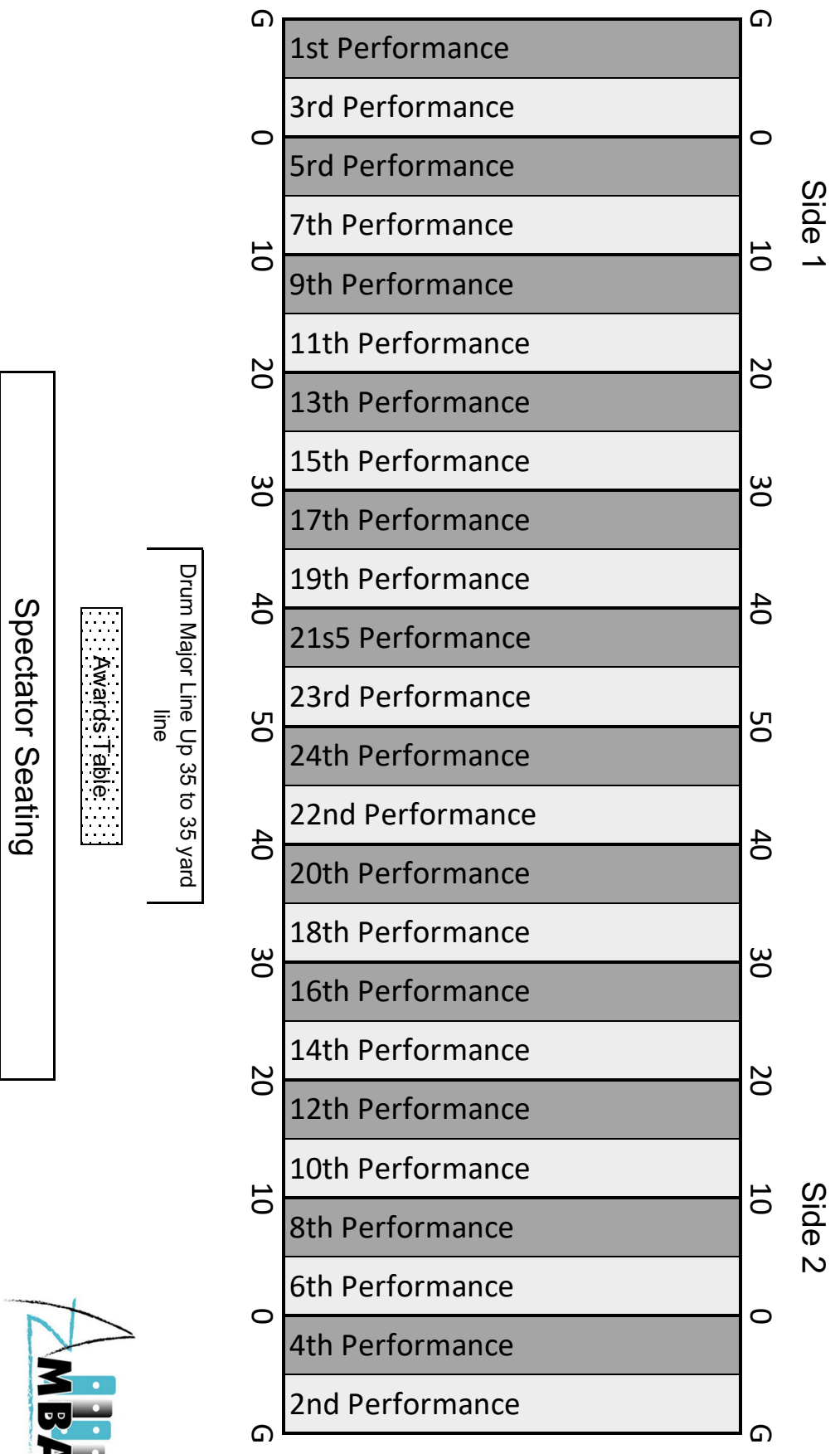


Retreat Instructions:

1. Meet in staging area when called
2. Drum Majors meet in designated area
3. Review the order map and know which band you follow
4. We fill the field from outer yard lines working in
 - a. 1st performance will go to north end of field and enter the yard line as they are announced
 - b. 2nd performance will stay at south end of field and enter the yard line as they are announced
 - c. So on.....
5. Each band needs to continue walking toward their yard line as the bands enter, don't stay at the south end until someone waves you toward the center – you should reach your yard line in time for the announcer to introduce you (3rd performance band will follow directly behind 1st performance band and be ready to enter 5 yard line; 4th performance band will fall in line behind 2nd performance and be ready to enter south end 5 yard line as the announcer introduces you.

The numbers in the staging area refer to PERFORMANCE ORDER – if your band performed 1st, 3rd, 5th etc line up in the north of the staging area. If your band was 2nd, 4th, 6th etc in performance, line up in the south area of the staging area.

AzMBA 3A Championships @ Campo Verde HS Full Retreat





AzMBA Championship Weather Procedure

Plan A – Conditions Normal

Normal format and competition procedures.

Field, weather, and facilities will be in suitable condition for all bands:

- 4 venue sites
- 1 day format
 - 1A at Buckeye Union High School
 - 2A at Mountain Pointe High School
 - 3A at Campo Verde High School
 - 4A at Perry High School
 - Full retreat awards at each site

Plan B – Moderate Weather Conditions

Rain leading up to, or on day of competition.

If conditions are potentially not suitable for all bands:

- Normal 1 day format stays in effect.
- AzMBA will provide covered areas for Pre-stage/warm-up only.
- Pits who choose to use covers or pop-up tents must provide their own.
- If site has turf field, competition will continue as scheduled.
- If venue has a grass field, venue may change to another pre-booked turf venue, but schedule will remain the same.
- Timing/Penalties will still be in effect.
- Show Coordinator may call Plan B into effect with approval of the Executive Board by 5pm, Friday evening leading to the competition.
- Notification will be sent via text, email, Competition Suite and website.
- Performing will be left up to the discretion of the unit's director and staff.

Plan C – Severe Weather Conditions

Complete rain out.

Any weather conditions that do not allow for safe outcome for performers:

- Location of performance venue within region, and day of performance may change based on weather conditions.
- Performance order will remain the same, but times may change.
- AzMBA will provide covered areas for Pre-stage/warm-up only.
- Pits who choose to use covers or pop-up tents must provide their own.
- Notification will be communicated to the membership on Friday, if Plan C may tentatively go into effect, by 5pm Friday prior to competition.
- Show Coordinator may call Plan C into effect with approval of the Executive Board no later than 5am the morning of competition.
- Notification will be sent via text, email, Competition Suite and website.
- Performing will be left up to the discretion of the unit's director and staff.

Plan D – Natural Disaster: Cancellation of Competition