



Show at Buckeye Union HS 9/27 (Flipped)

Host Director - [Sharnell White](#)

[Welcome Letter](#)

Campus/Host Information/Description (include address, directions from nearest major freeway, day-of-show emergency phone contacts)

- Buckeye Union High School - 1000 E. Narramore Avenue Buckeye, AZ 85326
- Head west on I-10 (toward Los Angeles) to Buckeye, and take Miller Road/exit 114 south to Monroe Avenue.
- Turn east onto Monroe Avenue from Miller, and then turn west on Narramore Avenue (apartments are on the right as you turn the corner).
- Just past the apartments, on the north side, is Buckeye Union High School.
- Turn north (right) on Beloit Street, and this will take you to the Welcome Tent and then onto campus to unload.
- **Show Day Emergency Contacts: Sharnell White, Director of Bands, (623) 670-1084; Gloria Solis, (602) 828-3906; Panch Honne, (623) 680-0366**

Spectator Parking Location/Description

- Spectator Parking will be south of our main gym and north of the tennis courts.

Bus Unloading Location/Description (include any notices about height/clearance or ingress/egress restrictions)

- Bus unloading will be located in the cement driveway between the Performing Arts Center (just east of the football field) and the cafeteria. Buses will be directed in and asked to pull up as far as they can based on space available/time of day. Our volunteers will be working hard to keep this moving safely and efficiently as groups unload and other groups arrive.

Bus Parking Location/Description (include any notices about height/clearance or ingress/egress restrictions)

- Bus parking is located on the northeast side of the school. Once buses are unloaded, our volunteers will direct drivers to the bus lot.

Truck/Trailer Unloading Location/Description (include any notices about height/clearance or ingress/egress restrictions)

- Truck/trailer unloading will also be located in the cement driveway between the Performing Arts Center (just east of the football field) and the cafeteria. Trucks/trailers will be directed in and asked to pull up as far as they can based on space available/time of day. Our volunteers will be working hard to keep this moving safely and efficiently as groups unload and other groups arrive.

Truck/Trailer Parking Location/Description (include any notices about height/clearance or ingress/egress restrictions)

- Truck/trailer parking is located on the northeast side of the school. Once trucks/trailers are unloaded, our volunteers will direct drivers to truck/trailer parking (where buses will be stationed as well).

Unit Check-In Location/Description

- Unit Check-in is located on the east side of N. Beloit St. just before entering the BUHS campus. There will be a pop-up tent and volunteers ready to meet you as you arrive.

Warm Up Areas A, B, and C Location/Description (indicate what direction units should face when playing, nearest shade/shelter from sun; one of your water stations should be located near the three warmup areas)

- Warm Up Area A will be located in our West Quad (units should face north or south when playing).
- Warm Up Area B will be located in our East Quad (units should face north or south when playing).
- Warm Up Area C will be located under the solar panels in the parking lot on the southeast corner of the school (units should face south or east when playing and guard is welcome to use the grass retention field directly south of the parking lot).

Stadium Spectator Entrance/Exit Location/Description

- Stadium Spectator Entrance/Exit Location is the parking lot off of N. Beloit St between the main gym (which is slightly southeast of the football stadium) and tennis courts. Parking here provides easy access to the football field.

Stadium Spectator Restrooms Location/Description

- Stadium Spectator Restrooms are located on both sides of the football stadium (home and away).

Stadium Performer Entrance Location/Description

- Stadium Performer Re-Entry (after their performance) is located at the south side of the football stadium (main entrance for spectators).

Stadium/Field Unit Entrance Location/Description

- Stadium/Field Unit Entrance is located at the southwest corner of the football stadium. Units will walk from their warmup area west, pass in front of the main gym (which will be on the right), continue through an open gate onto a cement walkway in front of portable classrooms, and turn north (right) to the gate that will take them onto the field (where there will be water available). As units enter the track, they should use the outside lanes of the track. There will be adult volunteers to manage any traffic as groups enter and exit.

Stadium/Field Unit Exit Location/Description

- Stadium/Field Unit Exit is located at the southwest corner of the football stadium (at the same place they entered). Units will leave the field after their performance and should march out to the right (when facing the press box), heading south on the inside lanes of the track. There will be adult volunteers to manage any traffic as groups enter and exit. (Groups will then be directed to truck loading on the southwest side of the BUHS campus, where buses should also meet so students can change out of uniforms and put instruments away. Then buses/trucks can take the same route they took to the welcome tent to re-park.)

Stadium Unit Videographer Location/Description (All shows will provide a location near the top of the stands from which units may video their show.) Note: a videographer location is not needed at Sunrise Mountain, MCC, UofA Band Day or any of the championship sites.

- Stadium Unit Videographer Location will be in a roped off area near the top of the home (east) stands.

First Aid Location/Description (please consider access for emergency vehicles)

- First Aid will be located on the southeast corner of the track under a canopy. Emergency vehicles can access this location easily through gates at the southwest corner of the school campus.

Water Station Locations/Description

- There will be water stations at unit check-in, all 3 warmup areas, at the tennis courts, at the performer entrance/exit, truck loading, and at first aid.

Director Hospitality Location/Description

- Director hospitality will be located at the south endzone of the football field.

Concessions Location/Description (also include information regarding whether you take cash/card, menu items, additional food vendors/trucks)

- The concession stand location is on the home (east) side of the stadium. Cash and card will be accepted; and in addition to typical concession stand menu items (chips, candy, soda, for example), there will be additional food vendors/trucks (WeBPoppin and the Coffee Spot).

Campus/Facility Maps in PDF format (detailing each item above, separate from unit flow map described below)

[Campus Map](#)

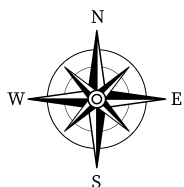
[Map to BUHS](#)

[Bus and Truck Map](#)

Unit Flow Map in PDF format (separate from campus/facility maps, the unit flow map should detail how each unit will move from bus and truck unload, through warmup A B or C, to stadium unit entrance, field/press box orientation, stadium unit exit, bus and truck reload)

[Unit Flow Map](#)

[Concessions Menu](#)



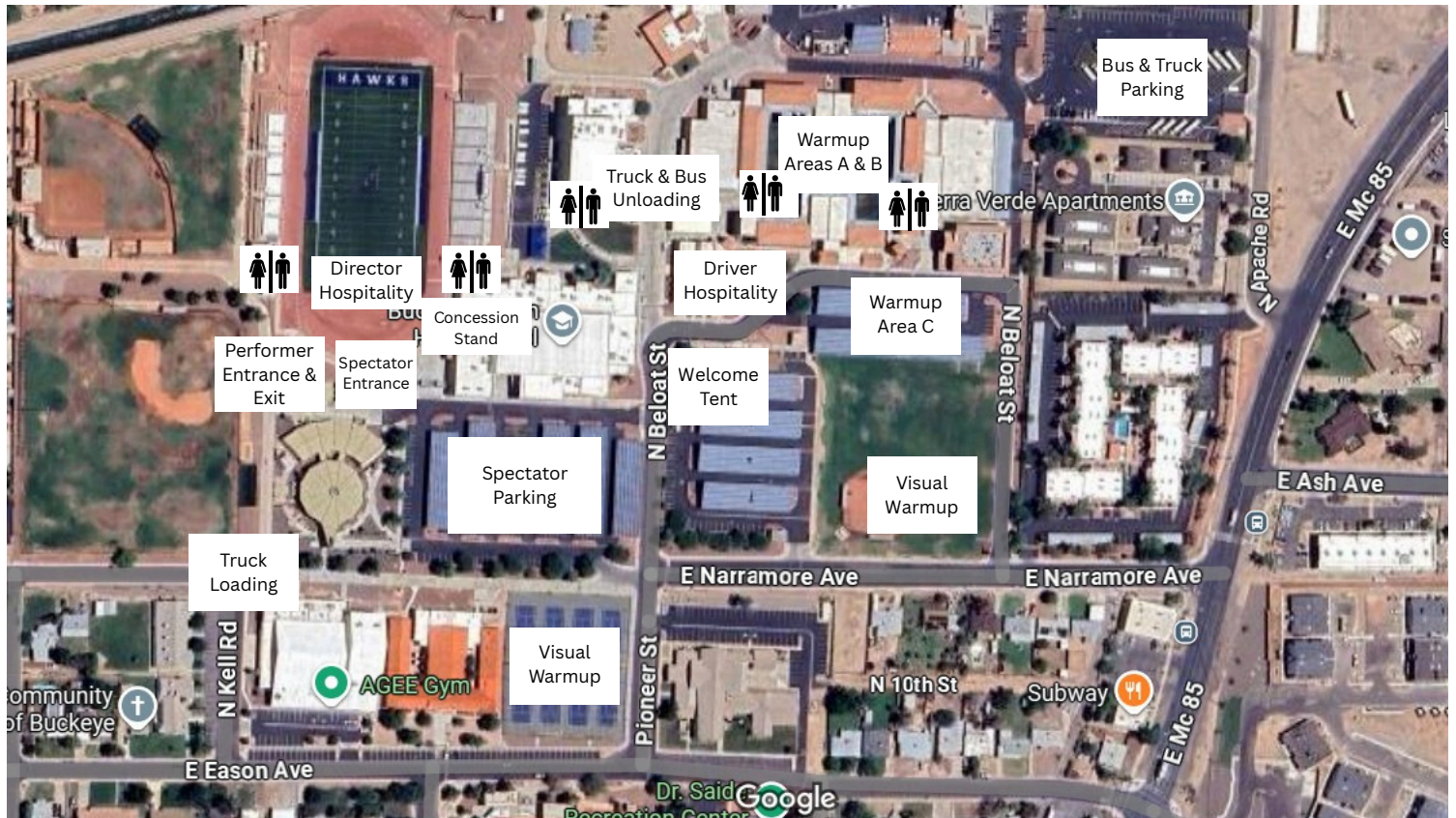
Bus & Equipment Truck Map

Buckeye Union High School

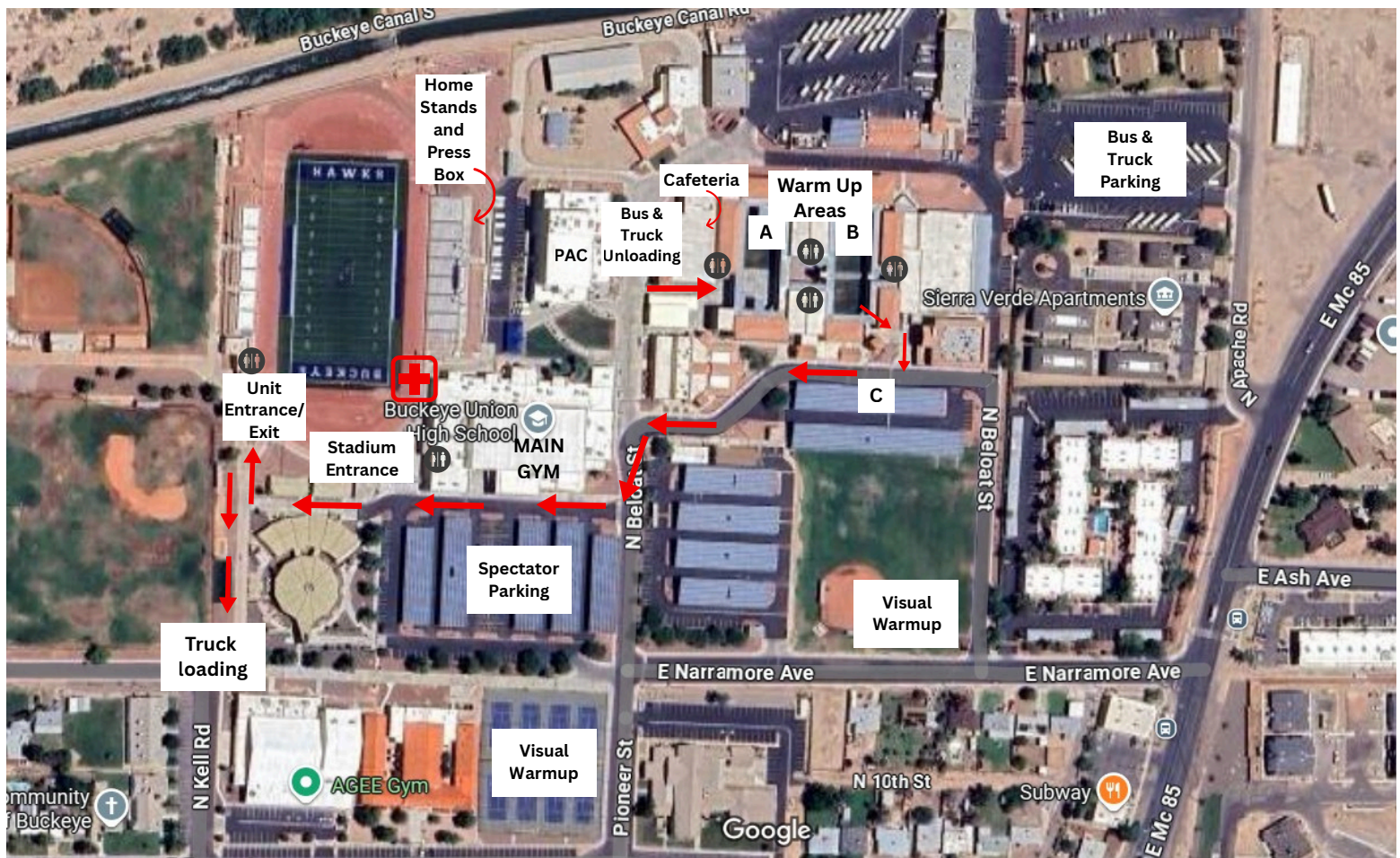
1000 E. Narramore Avenue Buckeye, AZ 85326

Head west on I-10 (toward Los Angeles) to Buckeye, and take Miller Road/exit 114 south to Monroe Avenue (E MC85). Turn east onto Monroe Avenue (E MC85), and then turn west on Narramore Avenue (apartments are on the right as you turn the corner). Just past the apartments, on the right, is Buckeye Union High School. Turn right on Beloit Street, and this will take you to the Welcome Tent (which will be on your right) and then onto campus to unload.

Campus/Facility Map



Unit Flow Map



Unit Flow Map to Stadium & Performance Buckeye Union High School 1000 E. Narramore Avenue Buckeye, AZ 85326

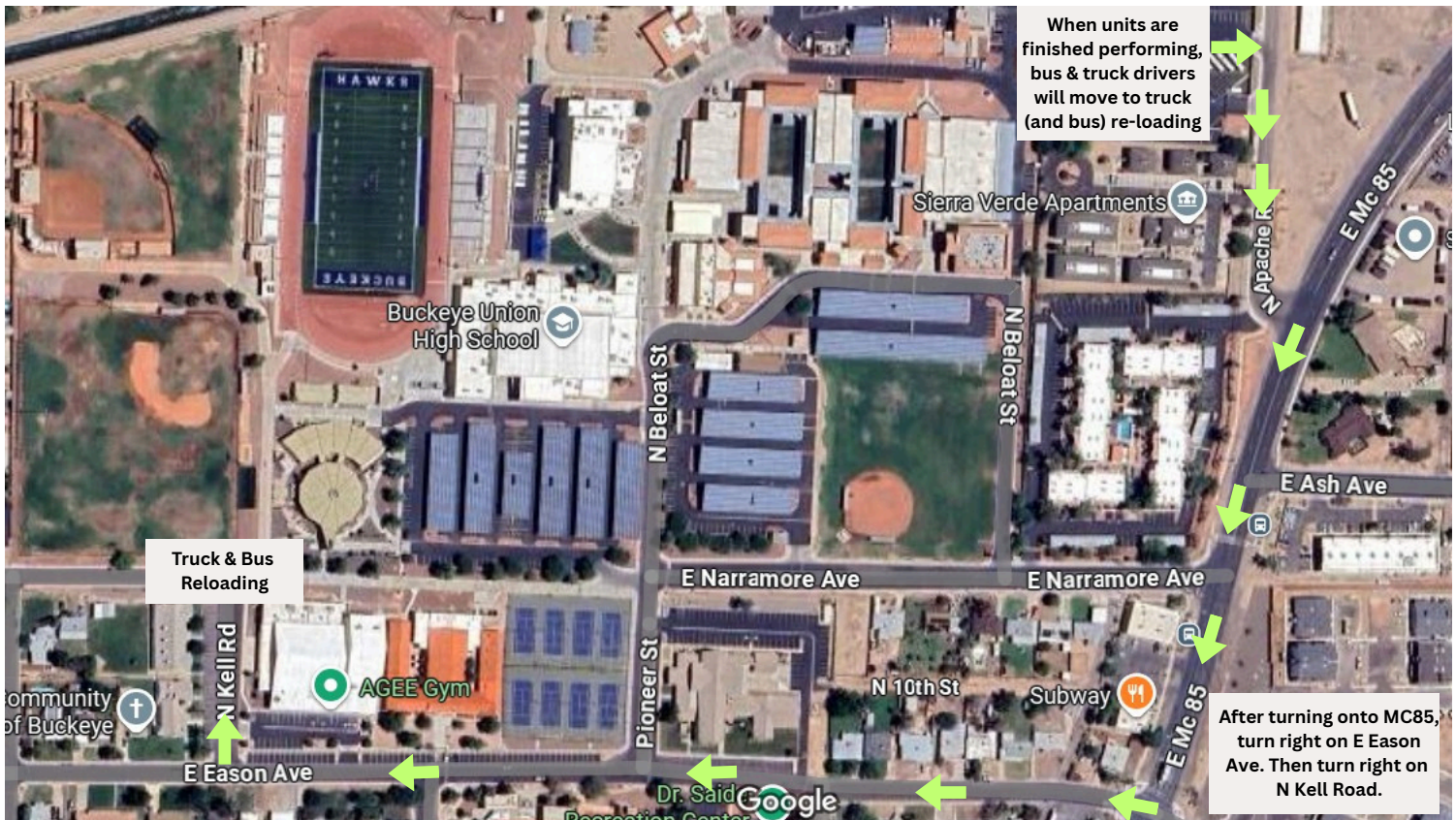
Units will unload in the bus lane between the PAC and the Cafeteria. Once unloaded, groups will travel to their assigned Warm Up Area (A, B, or C) if it is their scheduled warm up time.

*If it is not a group's assigned warm up time, directors can take their groups to do a visual warm up on the tennis courts or in the grassy area south of Warm Up Area C.

When groups finish warming up, they will then start moving to the southwest corner of the stadium for their performance time. Units will walk from their warmup area to the front (south side) of the school and then head west, passing in front of the main gym and the entrance to the stadium (which will both be on the right). They will then continue west through an open gate onto a cement walkway (with portable classrooms on the right), and turn north (right) to the gate that will take them onto the field.

After the performance, groups will exit the way they came in (southwest corner of the stadium). They will then continue south to truck (and bus) loading. We encourage directors to communicate with their bus and truck drivers so they can be available once their performance is over and meet their units on the west side of Agee Gym (N Kell Road). Once trucks are loaded, students are out of uniform, and instruments are put away, trucks and buses can move back to the parking lot on the northeast side of campus. Drivers should turn west off of Kell onto Narramore, turn south on 8th St, turn east onto Eason, and then turn north on Beloit, which will take them back to the Welcome Tent, and back to the parking lot on the northeast side of campus.

Truck & Bus Reload Map



Directors are encouraged to communicate performance times to their truck and bus drivers, so they can be stationed at Truck & Bus Reloading at the end of their performance. (The green arrows indicate the route to take from the parking lot.) This will allow for all students and staff to be in the same place for loading the truck, putting instruments away, and getting out of uniform.

Truck & Bus Repark Map



Once trucks are loaded, instruments are put away, and students have changed out of their uniforms, drivers can make their way back to campus to park. (The blue arrows indicate the route to take - turning west off of Kell onto Narramore, then south on 8th St, east onto Eason, and north on Beloit, which will take them back to the Welcome Tent, and back to the parking lot.)



COMPRA TUS ENTRADAS ONLINE

USA EL CÓDIGO QR ABAJO, O
VISITA GOFAN.CO Y BUSCA
ARIZONA MARCHING BAND ASSOCIATION





BUY TICKETS ONLINE

USE THE QR CODE BELOW, OR
VISIT [GOFAN.CO](https://gofan.co) & SEARCH
ARIZONA MARCHING BAND ASSOCIATION

