



## **Show at Sahuarita HS 9/27**

Host Director - [Benjamin Garland](#)

### [Welcome Letter](#)

Campus/Host Information/Description (include address, directions from nearest major freeway, day-of-show emergency phone contacts)

- Sahuarita High School - 350 W Sahuarita Rd., Sahuarita, AZ 85629
- If traveling south from Tucson on I-19, take exit 75 to Sahuarita Rd. After exiting, head east on Sahuarita Rd. to reach our campus.
- Show Day Emergency Contacts: **Benjamin Garland (Band Director): 520-971-1829; Lara Ludwick (Music Booster President): 520-904-0765**

### Spectator Parking Location/Description

- Spectator parking is located in our student parking lot, just north of the school. After exiting I-19 at exit 75, turn east onto Sahuarita Rd. Once you pass through the traffic light at Desert Gem, take your very next left to enter the bus loop. The student parking lot is located to your right just north of the school.

### Bus Unloading Location/Description (include any notices about height/clearance or ingress/egress restrictions)

- Buses will unload in our district parking lot, located just west of the school. After exiting I-19 at exit 75, turn east onto Sahuarita Rd. Once you pass through the traffic light at Calle Imperial, take your very next left to enter the district lot. The unloading area and unit check-in will be located in the northeast corner of the lot. Please be advised there are solar panels in this lot.

### Bus Parking Location/Description (include any notices about height/clearance or ingress/egress restrictions)

- After dropping off in the district lot, buses will be routed to the student parking lot for parking. After exiting the district lot, turn right to head west on Sahuarita Rd. At the traffic light at Rancho Sahuarita Blvd., turn right, and then turn right again at the next traffic light to enter the main campus bus loop. Follow the bus loop around to reach the student lot, just north of the high school. Buses must use the north gate to enter the parking lot, and then will be able to park along the perimeter of the lot. Attendants in each lot will be able to assist drivers with directions and parking.

### Truck/Trailer Unloading Location/Description (include any notices about height/clearance or ingress/egress restrictions)

- Equipment trucks will park and unload in our district parking lot, located just west of the school. After exiting I-19 at exit 75, turn east onto Sahuarita Rd. Once you pass through the traffic light at Calle Imperial, take your very next left to enter the district lot. Please be advised there are solar panels in this lot. An attendant will be able to assist drivers with parking.

Truck/Trailer Parking Location/Description (include any notices about height/clearance or ingress/egress restrictions)

- Trucks and trailers will be able to parking in the unloading area.

Unit Check-In Location/Description

- Unit check-in will be located in the northeast corner of the district parking lot, just west of the high school.

Warm Up Areas A, B, and C Location/Description (indicate what direction units should face when playing, nearest shade/shelter from sun; one of your water stations should be located near the three warmup areas)

- Warm Up A is the SHS Gym, just southeast of the stadium.
- Warm Up B is the SMS Gym, just west of the stadium.
- Warm Up C is either the SHS Cafeteria or the courtyard area just outside of the cafeteria. If warming up outside, please make sure to face east, away from the stadium. There is a covered ramada right outside the cafeteria.

Stadium Spectator Entrance/Exit Location/Description

- Spectator entry and exit is located in the southeast corner of the stadium.

Stadium Spectator Restrooms Location/Description

- Restrooms are located in the southeast corner of the stadium on either side of the concessions stand.

## Stadium Performer Entrance Location/Description

- Performers will be able to re-enter the stadium through either the southeast gate (if re-entering from bus parking) or the southwest gate (if re-entering from the equipment lot)

## Stadium/Field Unit Entrance Location/Description

- Units will enter the stadium from the southwest gate.

## Stadium/Field Unit Exit Location/Description

- Units will exit the stadium from the northwest gate.

Stadium Unit Videographer Location/Description (All shows will provide a location near the top of the stands from which units may video their show.) Note: a videographer location is not needed at Sunrise Mountain, MCC, UofA Band Day or any of the championship sites.

- A designated area for unit videographers will be located next to the press box, on the side closest to the concessions stand.

## First Aid Location/Description (please consider access for emergency vehicles)

- First Aid will be located behind the south end zone, near the concessions stand.

## Water Station Locations/Description

- Water stations will be located near Warm-up C, at Unit Check-in, at the performer entry and exit areas, and along the path from SHS toward the district lot. Warm-ups A and B are indoor warm-up spaces with water fountains.

### Director Hospitality Location/Description

- Director hospitality will be located in the north end zone.

### Concessions Location/Description (also include information regarding whether you take cash/card, menu items, additional food vendors/trucks)

- The concessions stand is located in the southeast corner of the stadium. The Sahuarita Music Boosters take cash, card, Zelle, and Venmo.

Campus/Facility Maps in PDF format (detailing each item above, separate from unit flow map described below)

[Campus Map](#)

[Vehicle Routing Map](#)

Unit Flow Map in PDF format (separate from campus/facility maps, the unit flow map should detail how each unit will move from bus and truck unload, through warmup A B or C, to stadium unit entrance, field/press box orientation, stadium unit exit, bus and truck reload)

[Flow Map](#)



# SAHUARITA

---

## INSTRUMENTAL MUSIC

Directors,

On behalf of Sahuarita High School and the Sahuarita High School Music Boosters, I am excited to welcome you on September 27 to this year's I-19 Showdown!

It's our goal to provide your group with a great experience while on our campus. To help the day run smoothly, make sure to review all the information in this packet prior to arrival. In addition to the info in this letter, you'll find a campus map, a vehicle routing map, and our performer flow map. Please share this information with your equipment and bus drivers. If you have any questions, please don't hesitate to reach out. We're happy to help in any way we can.

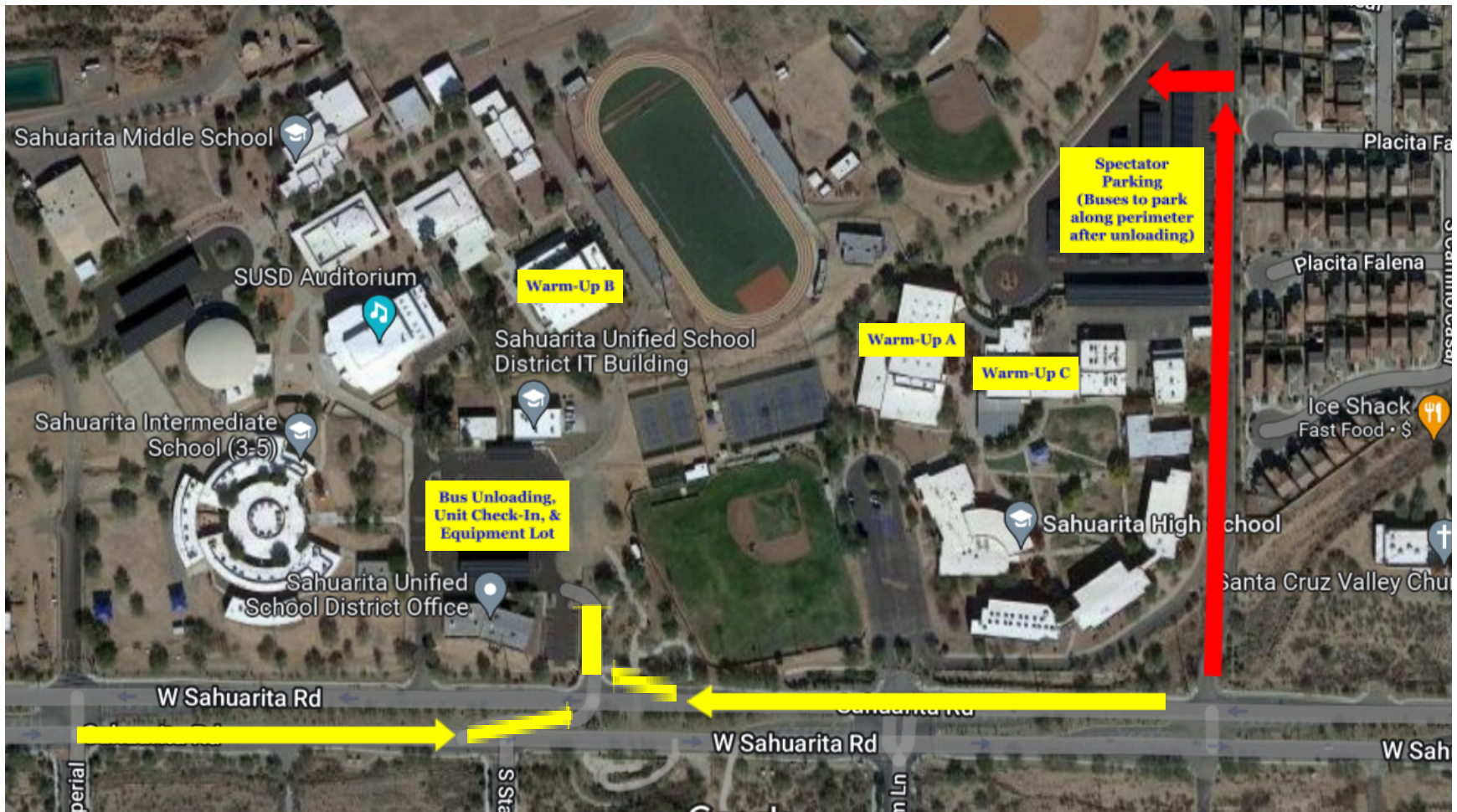
### Contact Information:

Benjamin Garland,  
Instrumental Music Director  
saul.garland@sahuarita.net  
(520)971-1829

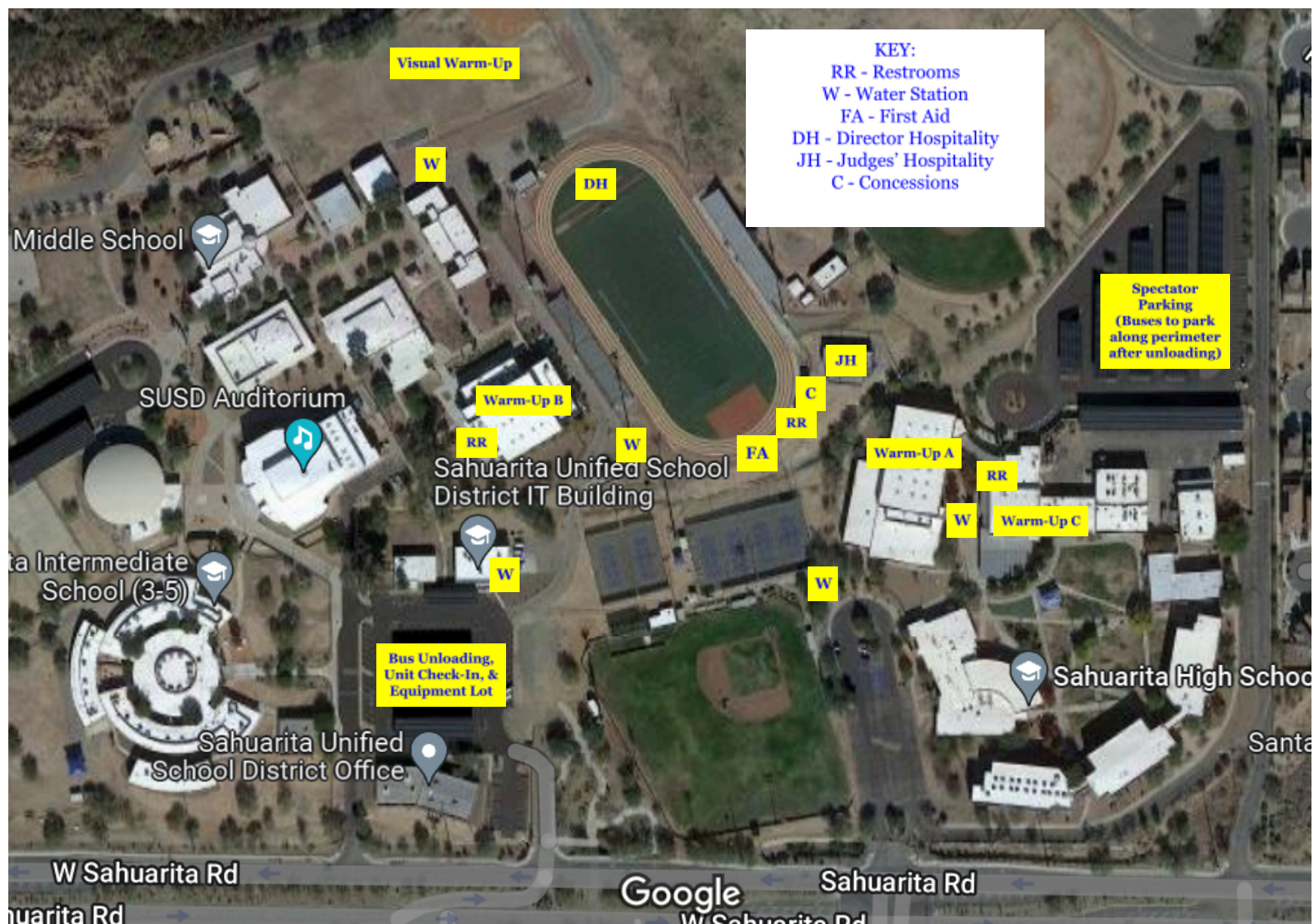
Lara Ludwick,  
Music Booster President  
laraludwick@gmail.com  
(520)904-0765















---

# COMPRA TUS ENTRADAS ONLINE

---

USA EL CÓDIGO QR ABAJO, O  
VISITA [GOFAN.CO](http://GOFAN.CO) Y BUSCA  
ARIZONA MARCHING BAND ASSOCIATION





---

# BUY TICKETS ONLINE

---

USE THE QR CODE BELOW, OR  
VISIT [GOFAN.CO](https://gofan.co) & SEARCH  
ARIZONA MARCHING BAND ASSOCIATION

