



ARIZONA MARCHING BAND ASSOCIATION

Central Region Championships Basha High School



TO: AzMBA Central Region Bands

FROM: Championship Committee

On behalf of AzMBA, we would like to welcome you to the 2025 Central Region Championships, hosted by Basha High School. Thank you for joining us this year and being a part of the success of AzMBA.

Enclosed is your packet containing important competition information and a map of the campus. We ask that each director help us in making this event successful in all aspects by communicating this information to staff, students, and spectators. AzMBA recommends you review the packet for show flow and information about Region Championships. **UNLOADING, PARKING AND LOADING INSTRUCTIONS ARE CRITICAL!**

Please share this packet with your parent supporters, bus drivers, truck drivers and staff. We recognize each of them as vital to a wonderful experience for all students!

If you have any questions, feel free to contact us at the phone numbers or email addresses listed below.

Again, thank you for attending, we anticipate a full day of fun and champion performances! Leave it all on the field!

Sincerely,
Championship Committee

Matt Kozacek
AzMBA President
president@azmba.org
480-234-9158

Day-Of Contact:

Shannon Howard-Flynn – Show Coordinator – (480) 678-2454
Travis Breedlove – Booster President – (480) 390-7613
Miles Denny – Director of Bands – (480) 209-9349
Alex DeFrances – Assistant Director of Bands – (623) 466-3037

General Information

SCHOOL ADDRESS: 5990 S Val Vista Dr., Chandler, AZ, 85249

From 202 San Tan Freeway, head south on Val Vista. Cross streets are Val Vista and Riggs

From I10 Freeway, head east on Riggs Road, cross streets are Val Vista and Riggs

FLOW MAP: Please familiarize yourself with the map and flow of the day before your scheduled times. You will be responsible to get your unit to and from the assigned areas before, during and after your performance.

BUS UNLOADING/CHECK IN: Busses will enter the SW lot at the light just west of Val Vista Drive. (The street is Black Hills Way) They will follow the path of the maps attached.

BUS PARKING LOCATION/DESCRIPTION: Busses will enter the same SW lot and park as directed by staff. See attached map

EQUIPMENT UNLOADING: Trucks and trailers will follow the same path as busses and need to unload at student drop off. See attached map.

TRUCK/TRAILER PARKING LOCATION/DESCRIPTION: See attached maps

BAND CHECK-IN: Check in will be at the north east side of the school, see attached maps.

PASSES: Units have their Director and Staff Badges that were distributed for the season. Performer/Field Pass wristbands will be distributed at Unit Check In. 1A and 2A bands will receive 12 wristbands for volunteers; 3A, 4A, and 5A bands will receive 16 wristbands.

PHOTOGRAPHY: There will be a photographer on site taking photos from the field level.

WARMUP LOCATIONS AND POLICY: Warm up areas will be at the north east side of the school, off of Val Vista, in the parking lot. Everyone will receive a packet with schedule times. See attached maps.

WATER STATIONS: Water stations will be located at the stadium, on campus, and at warm up stations. See attached maps

SPECTATOR PARKING: South West parking lot by tennis courts. See attached map

SPECTATOR ENTRANCE TO THE STADIUM: Spectators will enter and exit through the SW gate located at the stadium, see attached maps.

SPECTATOR RESTROOM LOCATION/DESCRIPTION: Spectator restrooms will be located at the SW side of the stadium, see attached maps

PERFORMER ENTRANCE: Performers will enter the SE side of the stadium, see attached maps

PERFORMER EXIT: Performers will exit the SW side of the stadium, see attached maps

FIRST AID LOCATION/DESCRIPTION: There will be a first aid tent located at the stadium on the SW side

MERCHANDISE & CONCESSION VENDORS: Concessions are located inside the stadium - provided by Basha Bands. Cash and card accepted, cards there is a small fee. We will also be hosting a food truck alley in our small parking lot located at the SW side of the tennis courts, see attached flyers and map. Wrist bands will be provided for re-entry of all spectators to support our band and vendors.

HOSPITALITY: Hospitality will be located on the south end of the field, see attached map

WRISTBANDS/HANDSTAMPS: Wristbands must be worn by everyone, including performers, in order to enter the stadium. Spectators will be receiving handstamps or wristbands in exchange for their GoFan ticket. AzMBA provides staff badges. Please be prepared to show a wristband, badge, or handstamp to event staff for entrance. Performers in uniform will be allowed to enter the stadium.

A Huge Thank You to Our Season Sponsors!

Platinum Sponsor - MVP Apparel

Gold Sponsor - Band Shoppe

Gold Sponsor - Music Celebrations International

Gold Sponsor - Music for All

Gold Sponsor - Schoolfundr.org

Gold Sponsor - Scoreboard Fundraising

Gold Sponsor - Yamaha

Silver Sponsor - Arizona Cardinals Football Club

Silver Sponsor - BravWell Video Creations LLC

Silver Sponsor - Mak Pack

Silver Sponsor - Milano's Music

Silver Sponsor - IMC Music Center

Silver Sponsor - Ultimate Drill Book

Caption Sponsor - Music & Arts

Caption Sponsor - Synced Up Designs

Caption Sponsor - Vic Firth/Zildjian

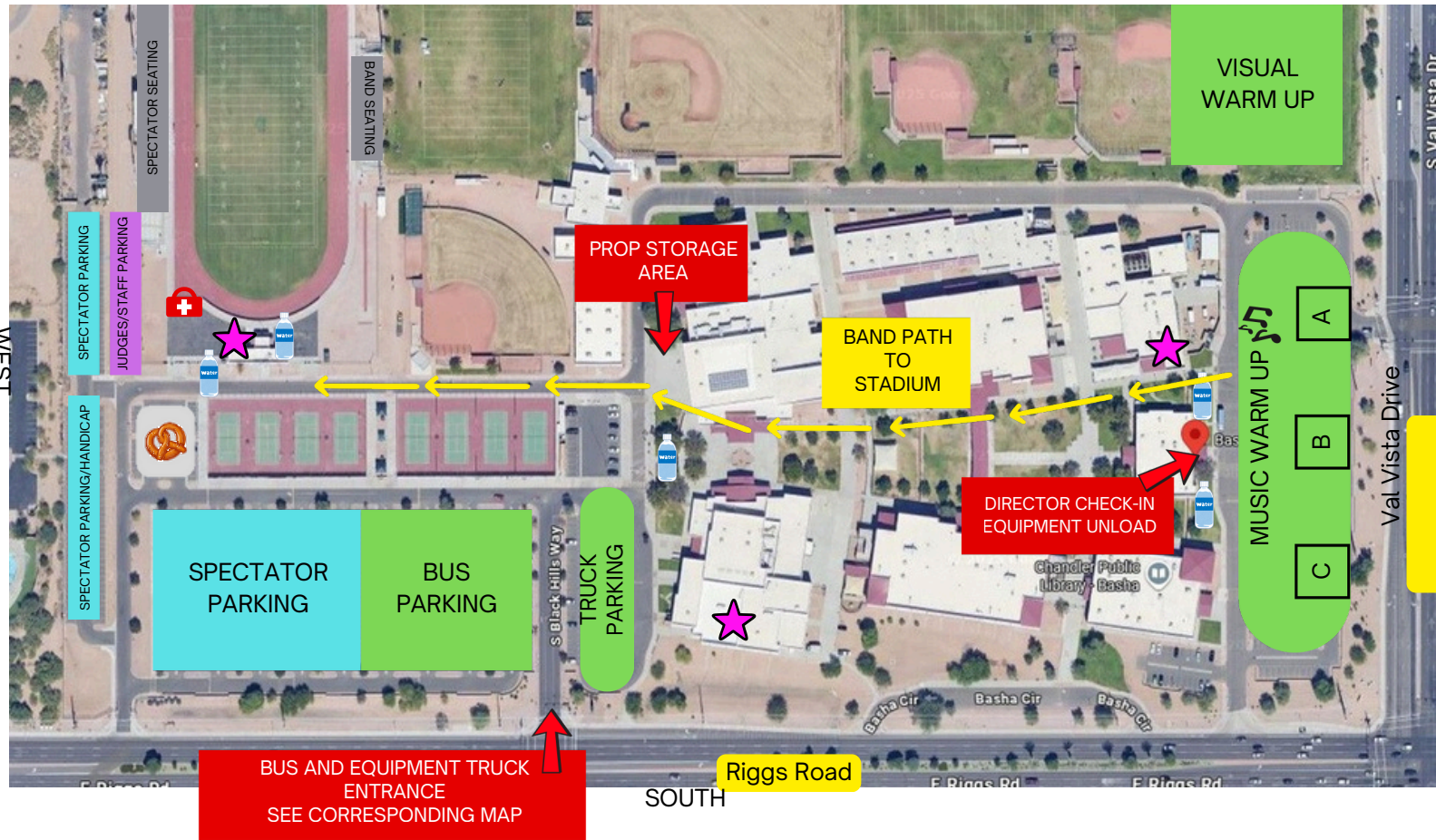
AzMBA Championships Weather Procedure

Plan A – Conditions Normal	Plan B – Moderate Weather Conditions	Plan C – Severe Weather Conditions
<p>Normal format and competition procedures.</p> <p>Field, weather, and facilities will be in suitable condition for all bands.</p> <p>3 venue sites 1 day format</p> <p>Central Region - Basha HS Northern Region - Bradshaw Mountain HS Southern Region - Ironwood Ridge HS</p>	<p>Rain leading up to, or on day of competition.</p> <p>If conditions are potentially not suitable for all bands:</p> <p>Normal 1 day format stays in effect.</p> <p>AzMBA will provide covered areas for Pre-stage/warm-up only.</p> <p>Pits who choose to use covers or pop-up tents must provide their own.</p> <p>If both sites have turf fields, competitions will continue as scheduled.</p> <p>If one venue has a grass field, venue may change to another pre-booked turf venue, but schedule will remain the same.</p> <p>Timing/Penalties will still be in effect.</p> <p>Show Coordinator may call Plan B into effect with approval of the Executive Board by 5pm, Friday evening leading to the competition.</p> <p>Notification will be sent via text, email, and website.</p> <p>Performing will be left up to the discretion of the unit's director and staff.</p>	<p>Complete rain out.</p> <p>Any weather conditions that do not allow for safe outcome for performers:</p> <p>Location of performance venue within region, and day of performance may change based on weather conditions.</p> <p>Performance order will remain the same, but times may change.</p> <p>AzMBA will provide covered areas for Pre-stage/warm-up only.</p> <p>Pits who choose to use covers or pop-up tents must provide their own.</p> <p>Notification will be communicated on Friday to the membership if Plan C may tentatively go into effect by 5pm Friday prior to competition.</p> <p>Show Coordinator may call Plan C into effect with approval of the Executive Board no later than 5am the morning of competition.</p> <p>Notification will be sent via text, email, and website.</p> <p>Performing will be left up to the discretion of the unit's director and staff.</p>

Plan D – Natural Disaster:
Cancellation of Competition

BAND PATH MAP

NORTH



LEGEND



FIRST AID



WATER

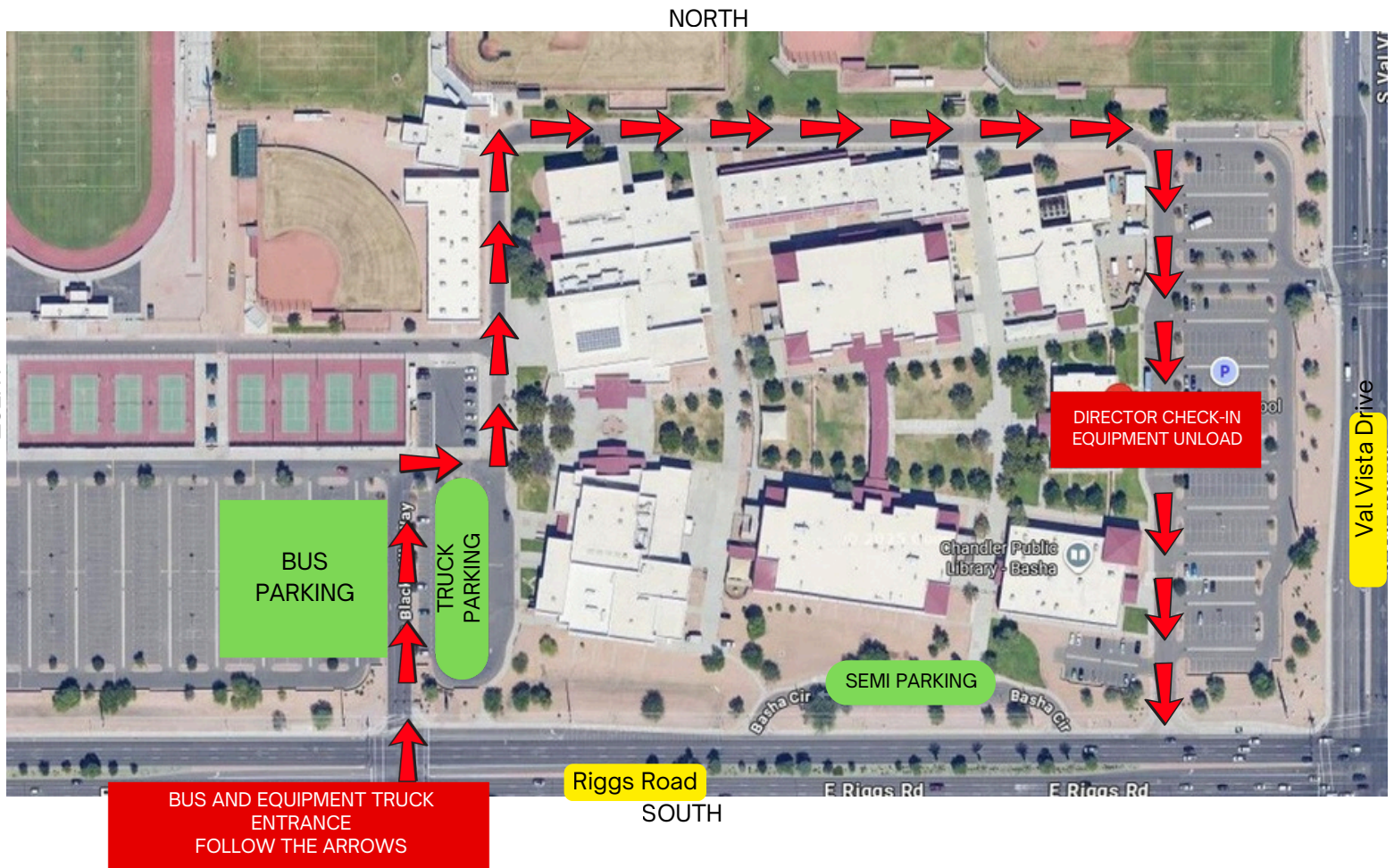


RESTROOMS



FOOD TRUCK ALLEY

BUS AND EQUIPMENT TRUCK FLOW MAP



JUDGE & STAFF PARKING/HOSPITALITY MAP

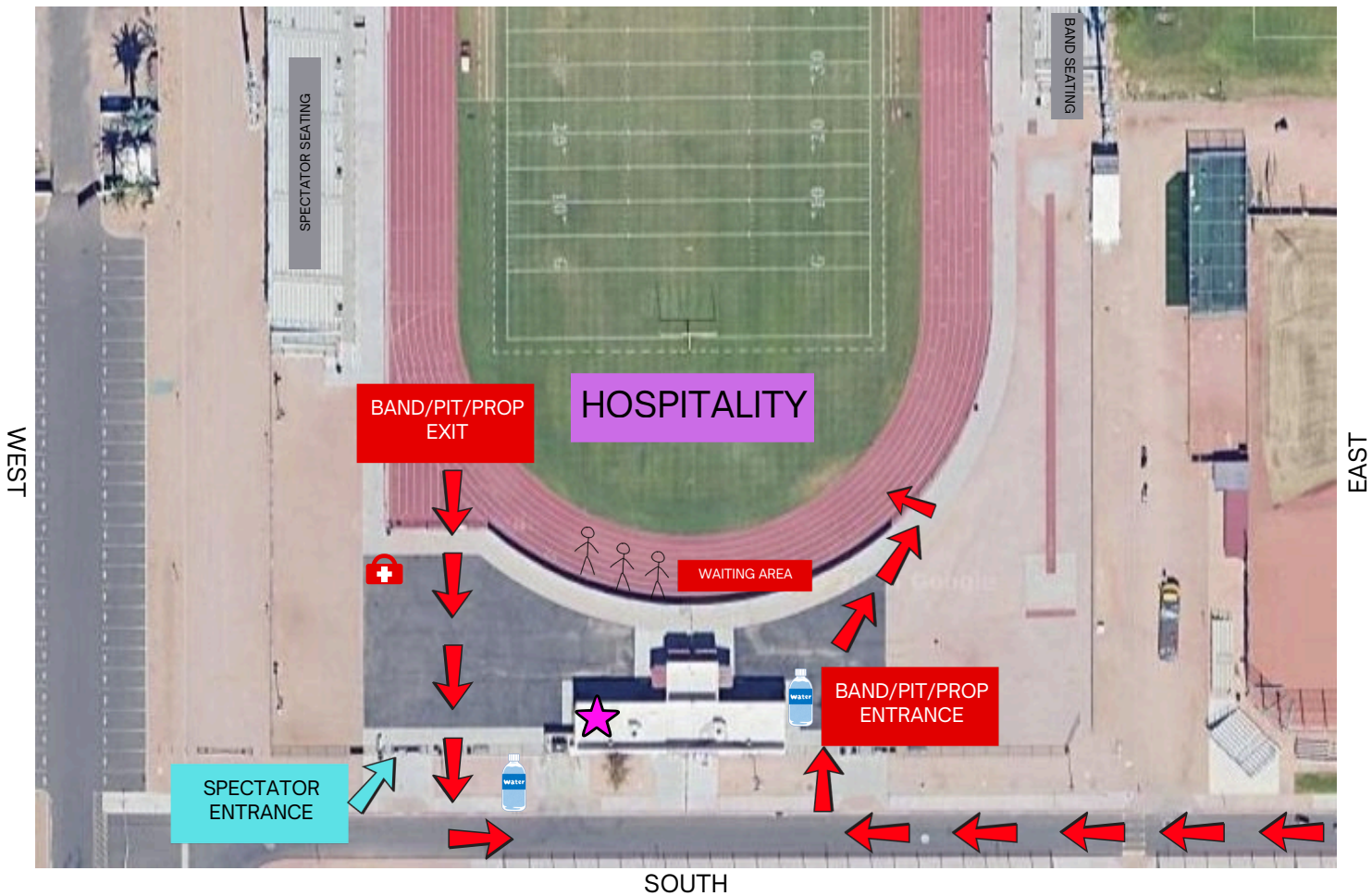
NORTH



SOUTH

BAND AND SPECTATOR ENTRANCE

NORTH



LEGEND

	FIRST AID		RESTROOMS
	WATER		FOOD TRUCK ALLEY

Basha Band

CONCESSION MENU



Hot Dog - \$3

Pulled Pork Sandwich - \$5

Cup of Noodles - \$3
(chicken or beef)

Uncrustables - \$2

Chips - \$1

Candy - \$2



Water - \$1

Gatorade - \$2

Soda - \$2

(Coke, Diet Coke, Sprite, Dr. Pepper)



Thank you for supporting our band!





SOUNDS ALONG THE SAN TANS FOOD TRUCK ALLEY

GUAC ONUP

RUSTY'S SWEETS & TREATS

BEN'S PRETZELS

WIKI-LICIOUS DONUTS

JEREMIAH'S ITALIAN ICE

ISLAND BOBA

ASADA TACOS

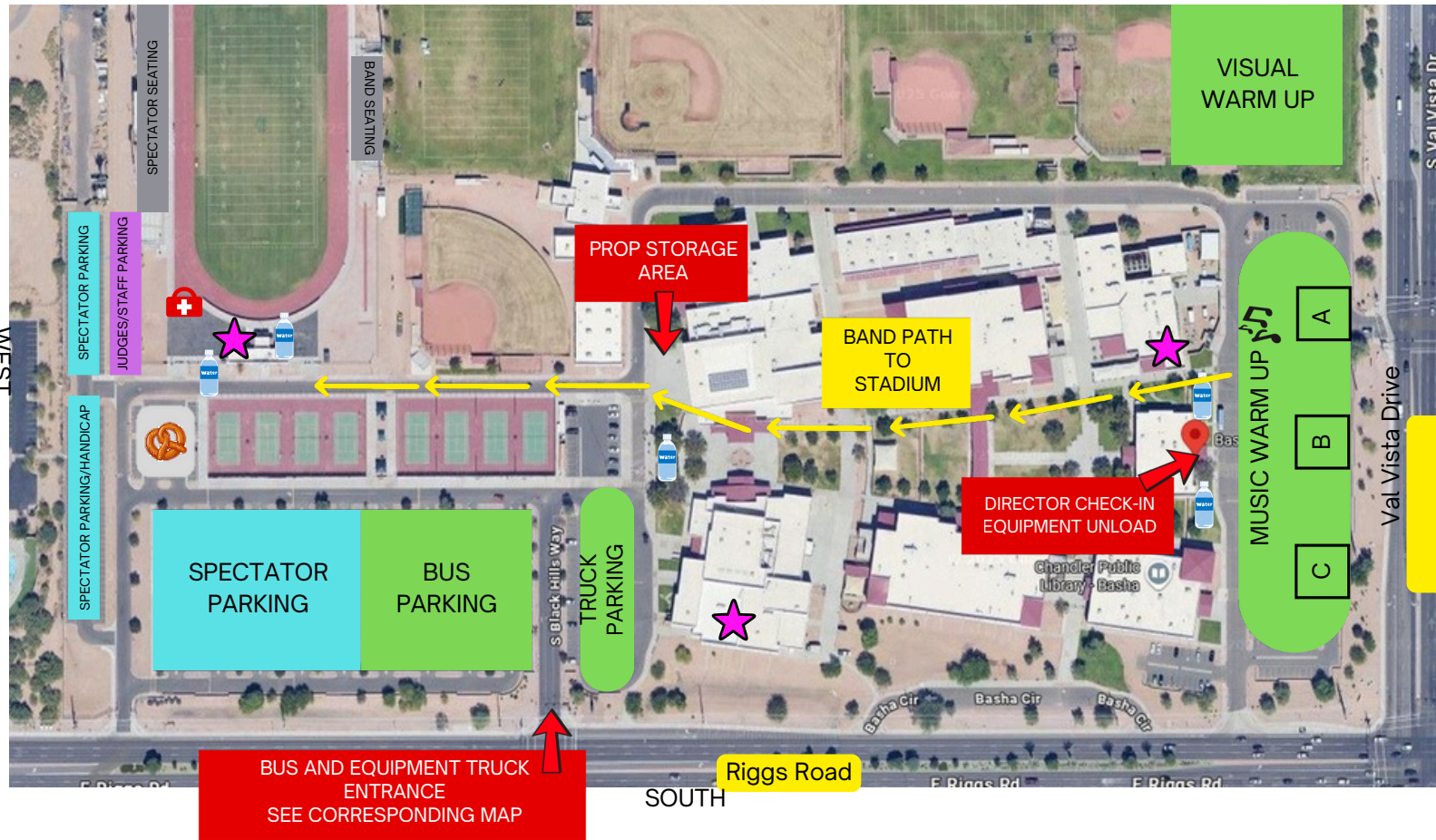


**LOCAL FOOD TRUCKS
SERVING UP
FAVORITES ALL DAY!**



BAND PATH MAP

NORTH



LEGEND



FIRST AID



WATER

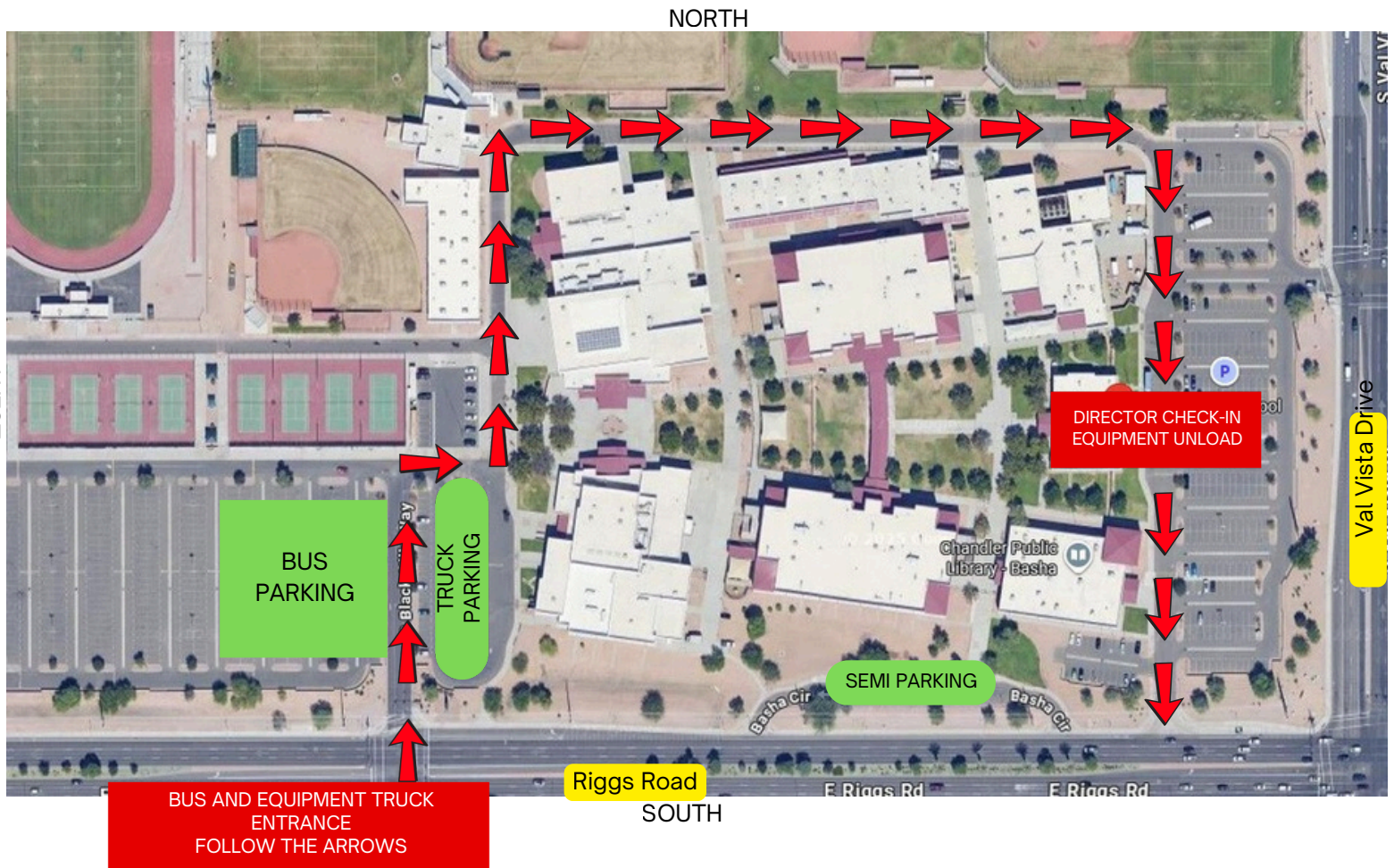


RESTROOMS



FOOD TRUCK ALLEY

BUS AND EQUIPMENT TRUCK FLOW MAP



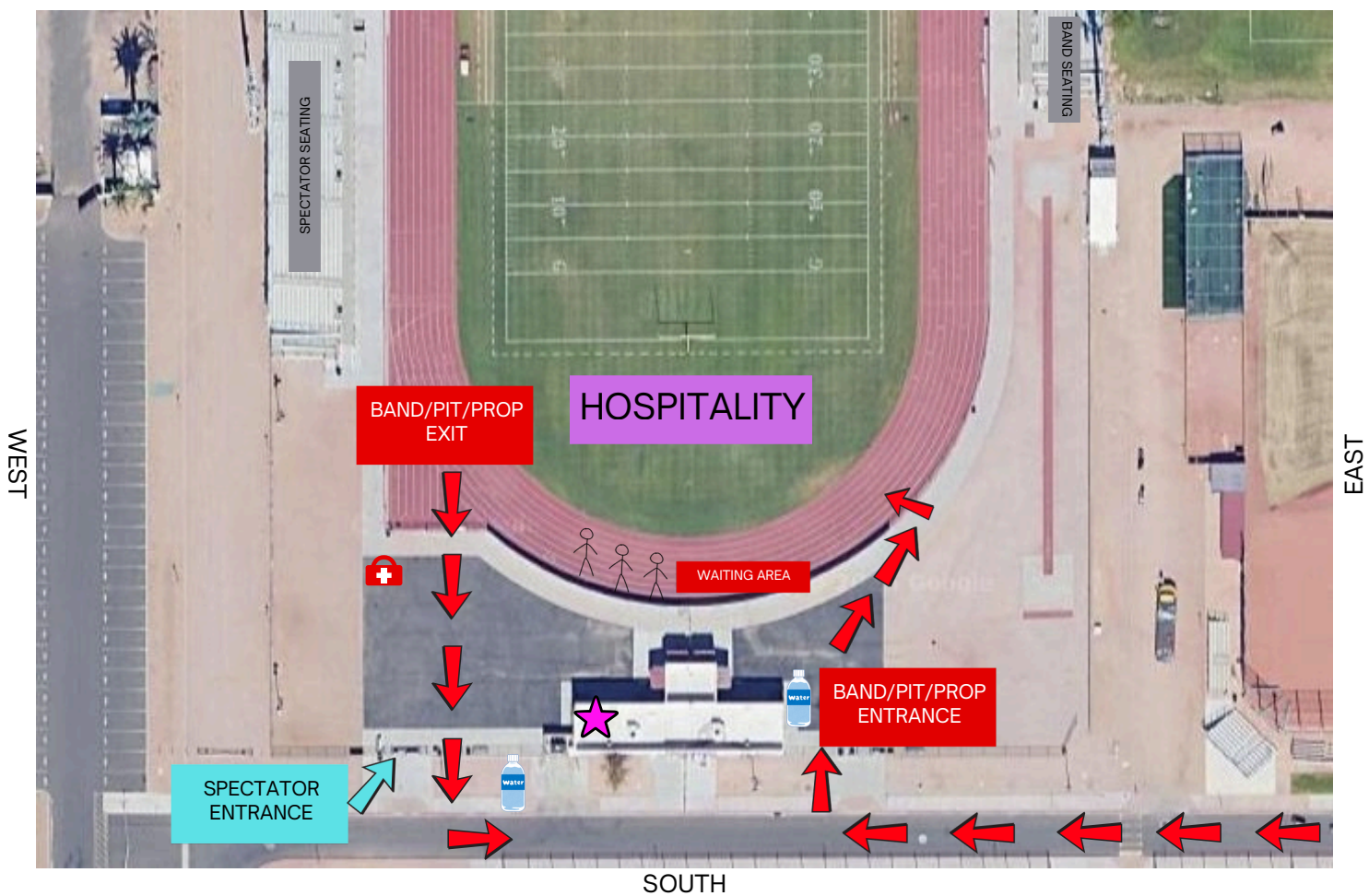
JUDGE & STAFF PARKING/HOSPITALITY MAP

NORTH



BAND AND SPECTATOR ENTRANCE

NORTH



LEGEND

	FIRST AID		RESTROOMS
	WATER		FOOD TRUCK ALLEY

Basha Band

CONCESSION MENU



Hot Dog - \$3

Pulled Pork Sandwich - \$5

Cup of Noodles - \$3
(chicken or beef)

Uncrustables - \$2

Chips - \$1

Candy - \$2



Water - \$1

Gatorade - \$2

Soda - \$2

(Coke, Diet Coke, Sprite, Dr. Pepper)



Thank you for supporting our band!





SOUNDS ALONG THE SAN TANS FOOD TRUCK ALLEY

GUAC ONUP

RUSTY'S SWEETS & TREATS

BEN'S PRETZELS

WIKI-LICIOUS DONUTS

JEREMIAH'S ITALIAN ICE

ISLAND BOBA

ASADA TACOS



**LOCAL FOOD TRUCKS
SERVING UP
FAVORITES ALL DAY!**





BUY TICKETS ONLINE

USE THE QR CODE BELOW, OR
VISIT [GOFAN.CO](https://gofan.co) & SEARCH
ARIZONA MARCHING BAND ASSOCIATION



CENTRAL REGION CHAMPIONSHIPS
OCTOBER 25, 2025 | 12:00 AM





COMPRAR BOLETOS EN LÍNEA

UTILICE EL CÓDIGO QR A CONTINUACIÓN, O
VISITA [GOFAN.CO](https://gofan.co) Y BUSCA
ARIZONA MARCHING BAND ASSOCIATION



CENTRAL REGION CHAMPIONSHIPS
OCTOBER 25, 2025 | 12:00 AM

