



Show at Mountain Ridge HS 10/4

Host Director - [Jeffrey Malone](#)

[Welcome Letter](#)

Campus/Host Information/Description (include address, directions from nearest major freeway, day-of-show emergency phone contacts)

- Mountain Ridge High School, 22800 N 67th Ave, Glendale, AZ 85310
- Take 67th Ave north from the 101 to Mountain Ridge Drive. Turn west on Mountain Ridge Drive and follow the signs.
- **Show Day Emergency Contacts: Allison Shepherd, (602) 570-1529
Keith Shepherd, (602) 561-8930**

Spectator Parking Location/Description

- From 67th Avenue, turn west onto MRHS Driveway. Continue past the first parking lot on the right and proceed into the student parking area. Do not park in designated ADA parking spots, in drop-off lanes designated with a blue line, or along curbs. Once this parking lot is full, use the overflow lots reserved for spectators and staff.

Bus Unloading Location/Description (include any notices about height/clearance or ingress/egress restrictions)

- Upon arrival, each band director will receive a packet containing wristbands for staff and parent volunteers as well as a meal ticket for your bus driver. A volunteer may board your bus to mark students' wrists, so that they may re-enter the stadium. The bus will then proceed to Student Drop-Off. Students will disembark and unload any needed uniforms, instruments and equipment from the bus. A picnic area is available on campus for bands to eat and congregate. It is located west of the cafeteria and bathrooms near warm up area B on the map.

Bus Parking Location/Description (include any notices about height/clearance or ingress/egress restrictions)

- Bus Parking – Hillcrest Middle School, 22833 N 71st Ave, Glendale, AZ 85310
- Bus parking is along the bus parking lot and lanes of Hillcrest Middle School. An additional 12 spots are available in the parking lot directly in front of Hillcrest Middle School. If your band is not staying until the completion of the invitational, please park buses on 71st Ave and pull through parking at Hillcrest Middle School to exit.

Truck/Trailer Unloading Location/Description (include any notices about height/clearance or ingress/egress restrictions)

- From 67th Avenue, turn WEST onto PATRICK LANE (north side of MRHS) and then turn left into the school Faculty Parking Lot (first entrance on the left).
PLEASE NOTE, THERE IS NO PARKING OR FEEDING BANDS IN THIS PARKING LOT.

Truck/Trailer Parking Location/Description (include any notices about height/clearance or ingress/egress restrictions)

- After unloading your equipment, you will be directed to exit the parking area by turning left (west) back onto Patrick Lane. When you reach 71st Ave, turn around and park on the south side of PATRICK LANE, facing EAST. This will enable an easy return to the lot for loading.

Unit Check-In Location/Description

- Upon arrival, each band director will receive a packet containing wristbands for staff and parent volunteers as well as a meal ticket for your bus driver. A volunteer may board your bus to mark students' wrists, so that they may re-enter the stadium. The bus will then proceed to Student Drop-Off. Students will disembark and unload any needed uniforms, instruments and equipment from the bus. A picnic area is available on campus for bands to eat and congregate. It is located west of the cafeteria and bathrooms near warm up area B on the map.

Warm Up Areas A, B, and C Location/Description (indicate what direction units should face when playing, nearest shade/shelter from sun; one of your water stations should be located near the three warmup areas)

- Band warm-up areas are located in the east administration parking lot of the school and on campus, as indicated on the map. An additional silent warm-up area is located in the southeast parking lot, under the covered parking area. Guard warm-up areas are located on the school tennis courts, just west of the equipment/pit unloading area near Patrick Lane. See Logistical Schedule for warm-up area assignments.
- Bands should play facing east, away from the stadium, during warm-up.
- PLEASE NOTE, ACCESS TO AND FROM WARM-UP AREAS IS RESTRICTED TO A MAXIMUM HEIGHT OF 117 INCHES (9' 9"). ANY PROPS OR CONSTRUCTED INSTRUMENTS OVER THE MAX HEIGHT WILL BE LIMITED TO MOVEMENT FROM THE EQUIPMENT LOT TO THE PROP HOLDING AREA TO THE PERFORMANCE STADIUM ONLY.

Stadium Spectator Entrance/Exit Location/Description

- Spectators enter and exit the stadium through the south stadium gate, nearest to admissions. Spectators are able to exit and re-enter the stadium with their wristband.

Stadium Spectator Restrooms Location/Description

- Spectator restrooms are located inside the stadium behind the concessions booths on both the home and visitors sides of the field.

Stadium Performer Entrance Location/Description

- Bands re-enter the stadium at the Re-Entry Gate, directly north of the Admissions Booth. Bands may be asked to relocate to the Visitors Stands from the Home Stands in order to accommodate paid spectators.

Stadium/Field Unit Entrance Location/Description

- Front Ensemble Members & Pit Equipment enter AND exit from SIDE 1 (the performer's right or from the left from the viewpoint of the press box looking at the field).
- Band and guard Members enter from SIDE 1 and exit from SIDE 2.
- See map and Performance Schedule for more detailed information.

Stadium/Field Unit Exit Location/Description

- Front Ensemble Members & Pit Equipment enter AND exit from SIDE 1 (the performer's right or from the left from the viewpoint of the press box looking at the field).
- Band and guard Members enter from SIDE 1 and exit from SIDE 2.
- See map and Performance Schedule for more detailed information.

Stadium Unit Videographer Location/Description (All shows will provide a location near the top of the stands from which units may video their show.) Note: a videographer location is not needed at Sunrise Mountain, MCC, UofA Band Day or any of the championship sites.

- The video area is located on the top level of the home stands, just North of the Press Box. Please send only one person to take video as space is limited.

First Aid Location/Description (please consider access for emergency vehicles)

- First aid is located on the sidewalk across from the gate at the north entrance (side 1) of the stadium. A first aid kit is also located at our volunteer check-in booth across from the admissions booth.

Water Station Locations/Description

- Water stations are located in the warm-up area as well as in transit from warm-up to the stadium. There is another water station located at the band exit and re-entry gate.

Director Hospitality Location/Description

- Hospitality is available for directors in the cafeteria. A separate hospitality area for judges is located in the teacher's lounge. Refreshments and meals will be available at both areas. Transportation is available to and from the hospitality suite. Just let us know!

Concessions Location/Description (also include information regarding whether you take cash/card, menu items, additional food vendors/trucks)

- The concession stand location is on the home (east) side of the stadium. Cash and card will be accepted; and in addition to typical concession stand menu items (chips, candy, soda, for example), there will be additional food vendors/trucks (WeBPoppin and the Coffee Spot).

Campus/Facility Maps in PDF format (detailing each item above, separate from unit flow map described below)

[Campus Map](#)

[Logistical Map](#)

Unit Flow Map in PDF format (separate from campus/facility maps, the unit flow map should detail how each unit will move from bus and truck unload, through warmup A B or C, to stadium unit entrance, field/press box orientation, stadium unit exit, bus and truck reload)

[Flow Map](#)

[Concessions Menu](#)

8TH ANNUAL ROCK THE RIDGE

Saturday, October 4, 2025

Mountain Ridge High School

22800 N 67th Ave

Glendale, AZ 85310



Dear Director:

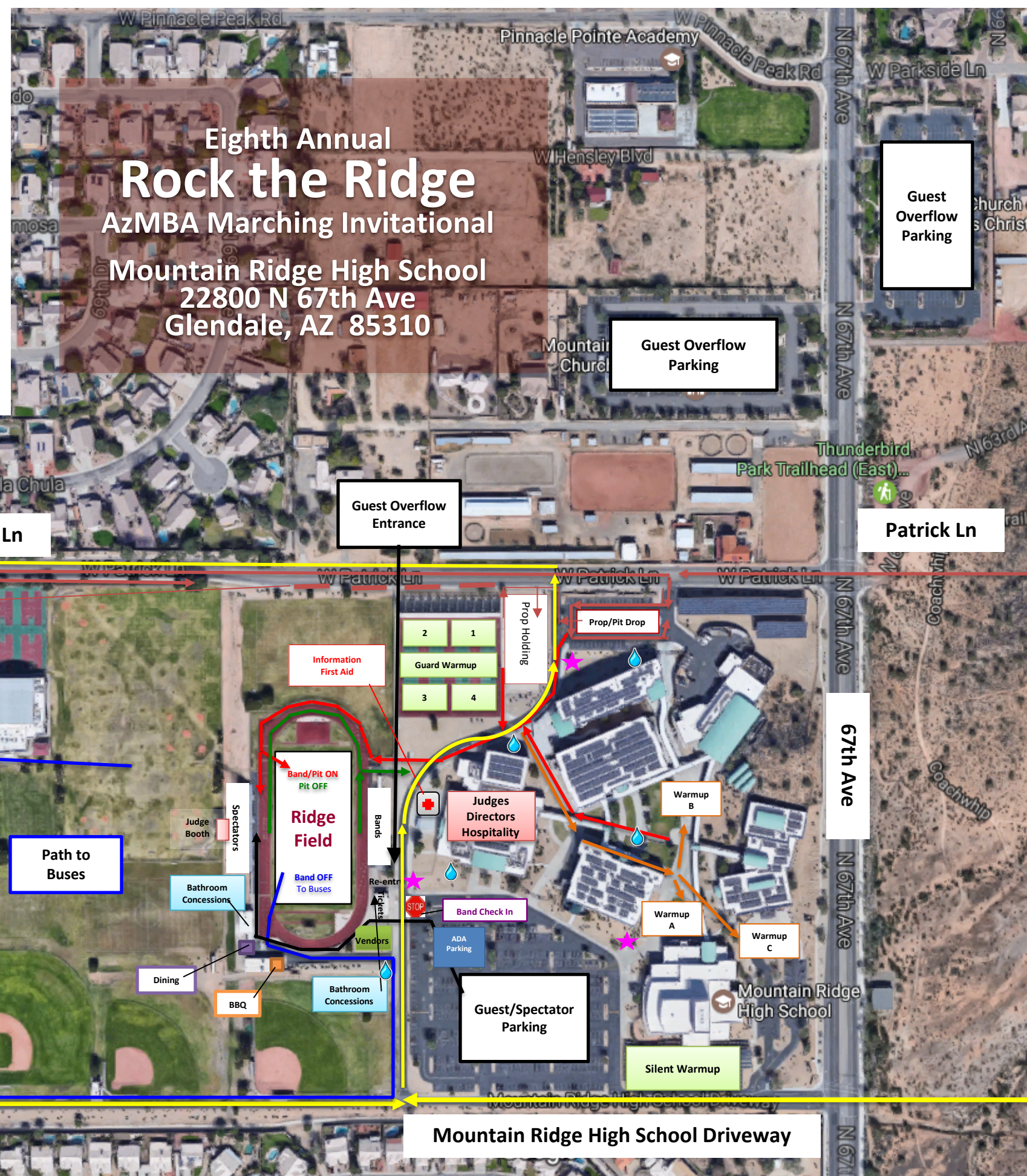
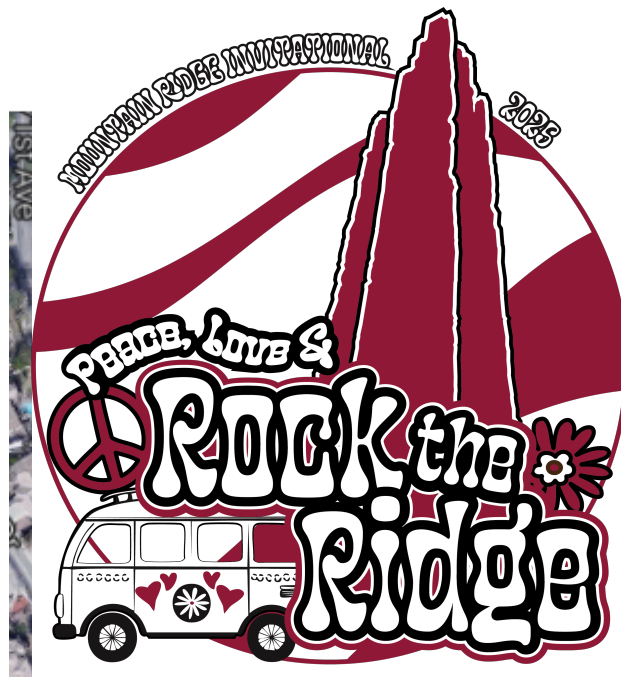
We are thrilled to welcome you to Eighth Annual Rock the Ridge Marching Invitational! Please read the following information and review the site map to facilitate unloading and parking when you arrive at Mountain Ridge. Please complete the brief Google Form [here](#) to help our logistics and hospitality teams best accommodate you and your band.

If you have any questions, please contact our Invitational Chairperson or Band Director. We look forward to serving as your host and hope that you, your students, and your band and guard families have a great experience.

[Allison Shepherd](#), Rock the Ridge Co-Chair, (602) 570-1529

[Keith Shepherd](#), Rock the Ridge Co-Chair, (602) 561-8390

[Jeffrey Malone](#), Band Director, (928) 925-0658



Bus Travel

Truck/Trailer Parking
(along Patrick Lane)

Bus Parking

Band March In

Band March Out
(Path to Buses)

Pit Exit

Post Awards
Bus Entrance

Additional Overflow Parking
Copper Creek Elem. School

Guest
Overflow
Parking

Guest Overflow
Parking

Guest Overflow
Entrance

Patrick Ln

Patrick Ln

67th Ave

71st Ave

Mountain Ridge High School Driveway

Information - First Aid
Check-in

MASTER Map

Water station

Truck Entrance
Prop/Pit Drop

Guard / SILENT
Warmup Area

Warm Up March In

Warm Up Areas

Band Check In
Drop Off

Staff Parking

Spectator Parking

Bus Entrance
MRHS Driveway

Rock the Ridge 2025 - Logistical Map

Stadium



Spectator Seating



Band Seating



Concessions



Concessions



Tables



Grill



Judges' Booth



Ticket Sales



First Aid



Information



MRHS Football Field



Stadium Entry



Field Judge Area



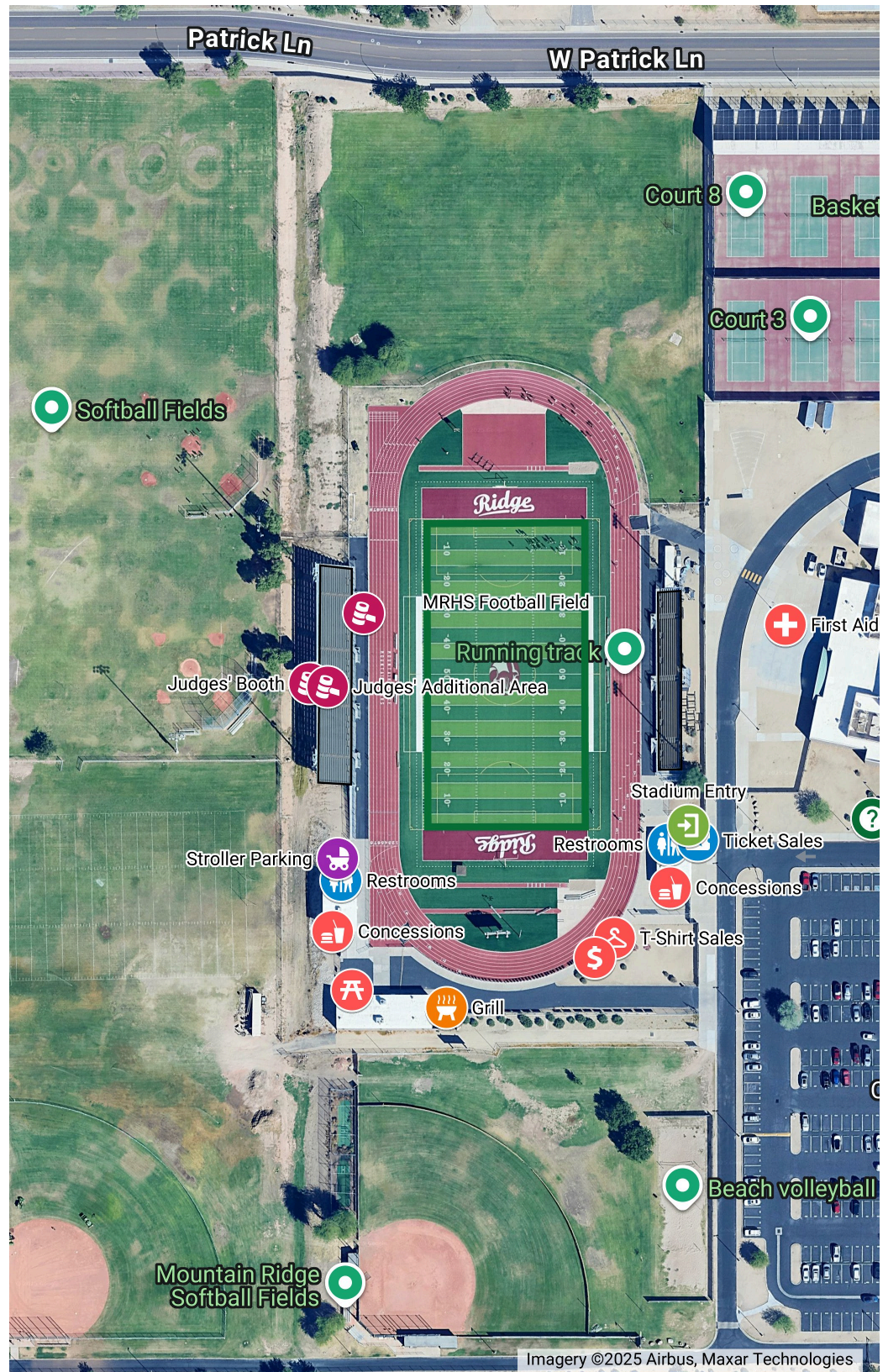
Judges' Additional Area



Stroller Parking



T-Shirt Sales



Shout-Outs! (\$3 or 2 for \$5)

Restrooms



Restrooms

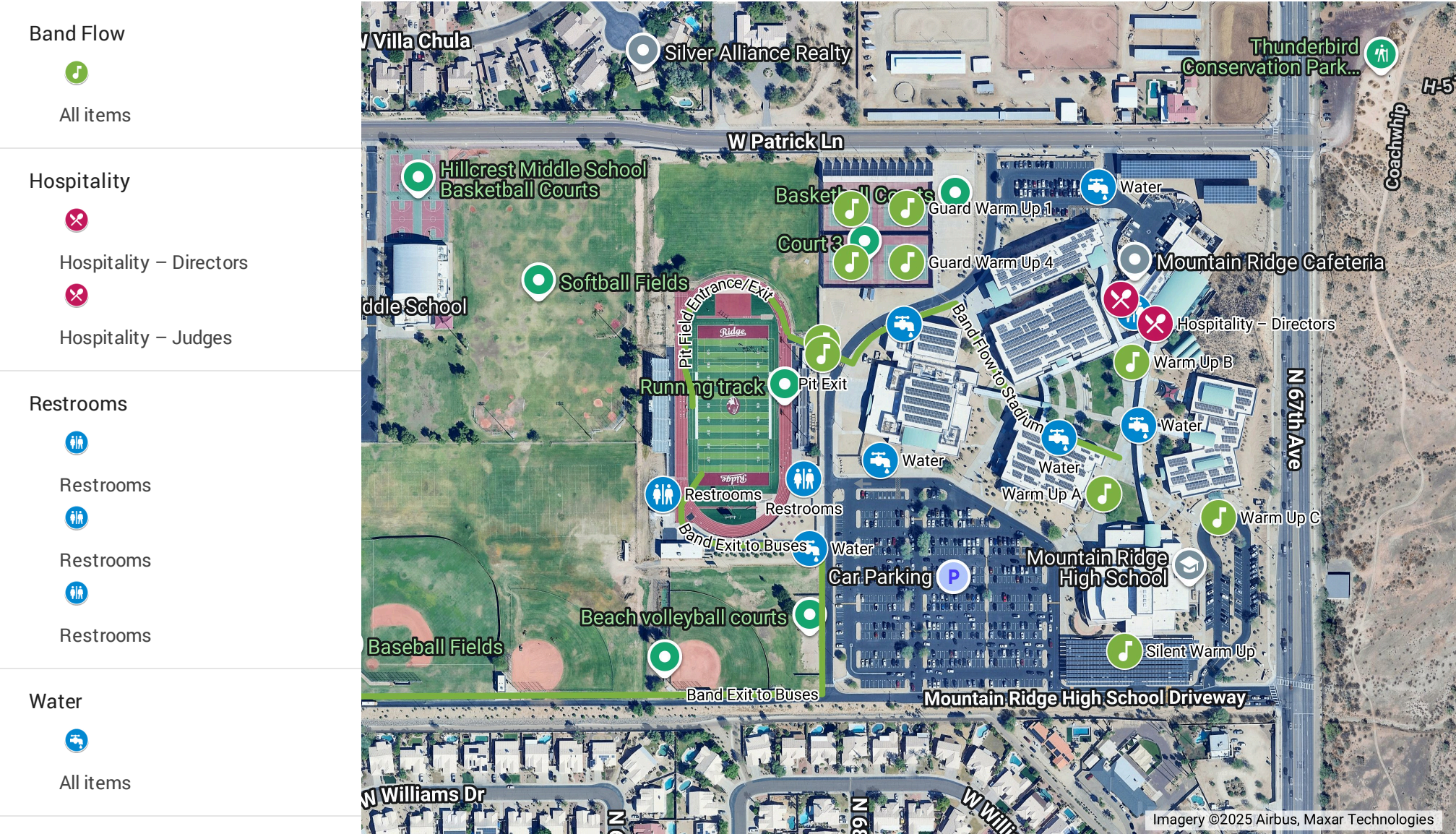


Restrooms




Restrooms

Rock the Ridge 2025 - Logistical Map



CONCESSIONS MENU

Signature Mountain Lion Burger		\$8.00
Signature Mountain Lion Bratwurst		\$8.00
Bratwurst		\$6.00
Cheeseburger / Hamburger		\$6.00
Jumbo Hot Dog (1/4 lb All Beef)		\$5.00
Nachos		\$5.00
Cup-o-Noodles		\$2.00
Giant Pickle		\$3.00
Candy / Chocolate		\$2.50
Chips		\$1.00
Jerky		\$3.00
Gatorade		\$3.00
Soda		\$2.00
Bottled Water		\$2.00



COMPRA TUS ENTRADAS ONLINE

USA EL CÓDIGO QR ABAJO, O
VISITA GOFAN.CO Y BUSCA
ARIZONA MARCHING BAND ASSOCIATION





BUY TICKETS ONLINE

USE THE QR CODE BELOW, OR
VISIT [GOFAN.CO](https://gofan.co) & SEARCH
ARIZONA MARCHING BAND ASSOCIATION

