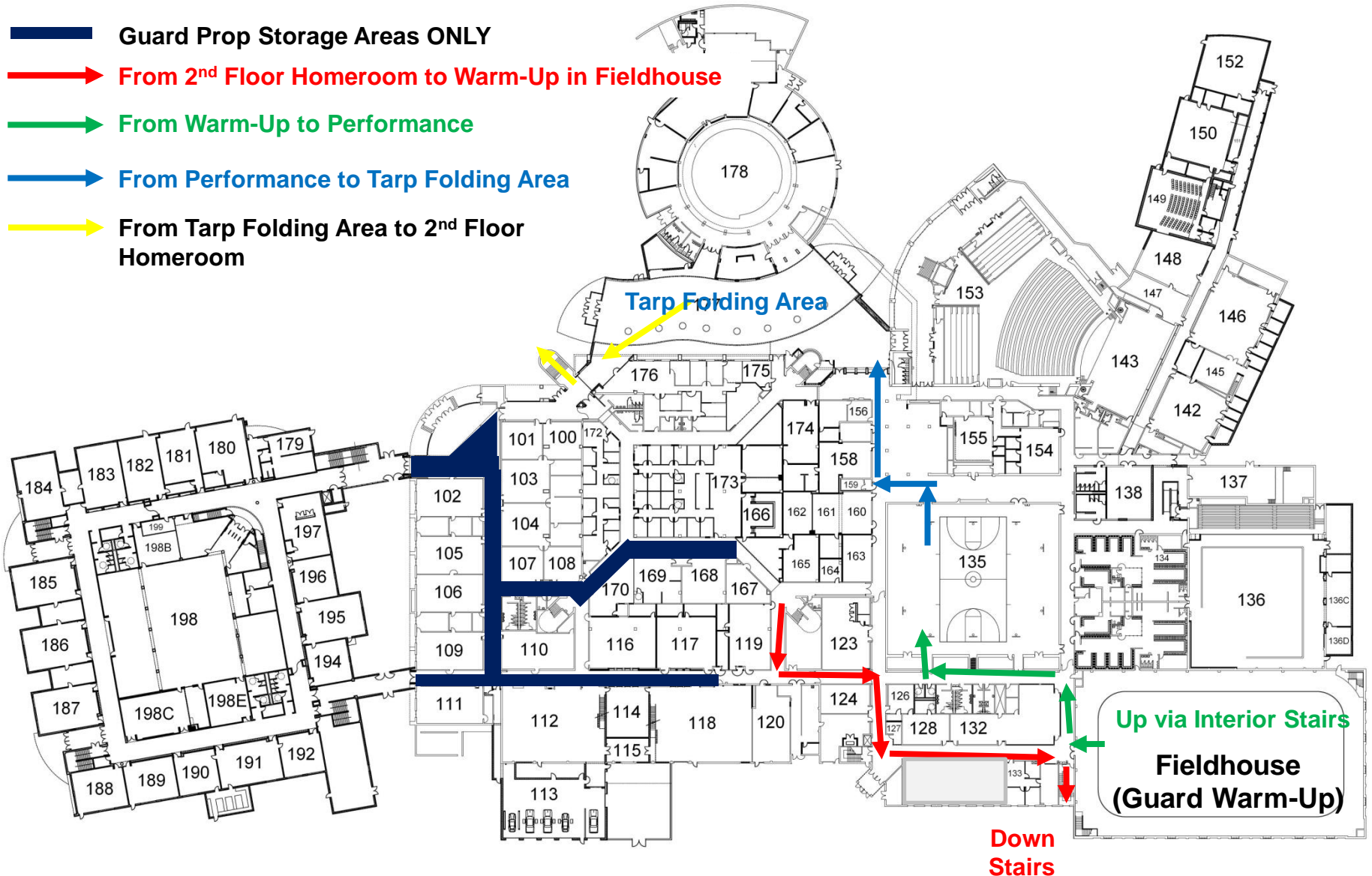




Novi High School Winter Invitational 2023



Novi Invitational - GUARD TRAFFIC FLOW



GYM DIAGRAM

Do not print this form. Simply save it to your local hard drive and click the check boxes and enter the information as appropriate. Be sure and save the file once you are done.

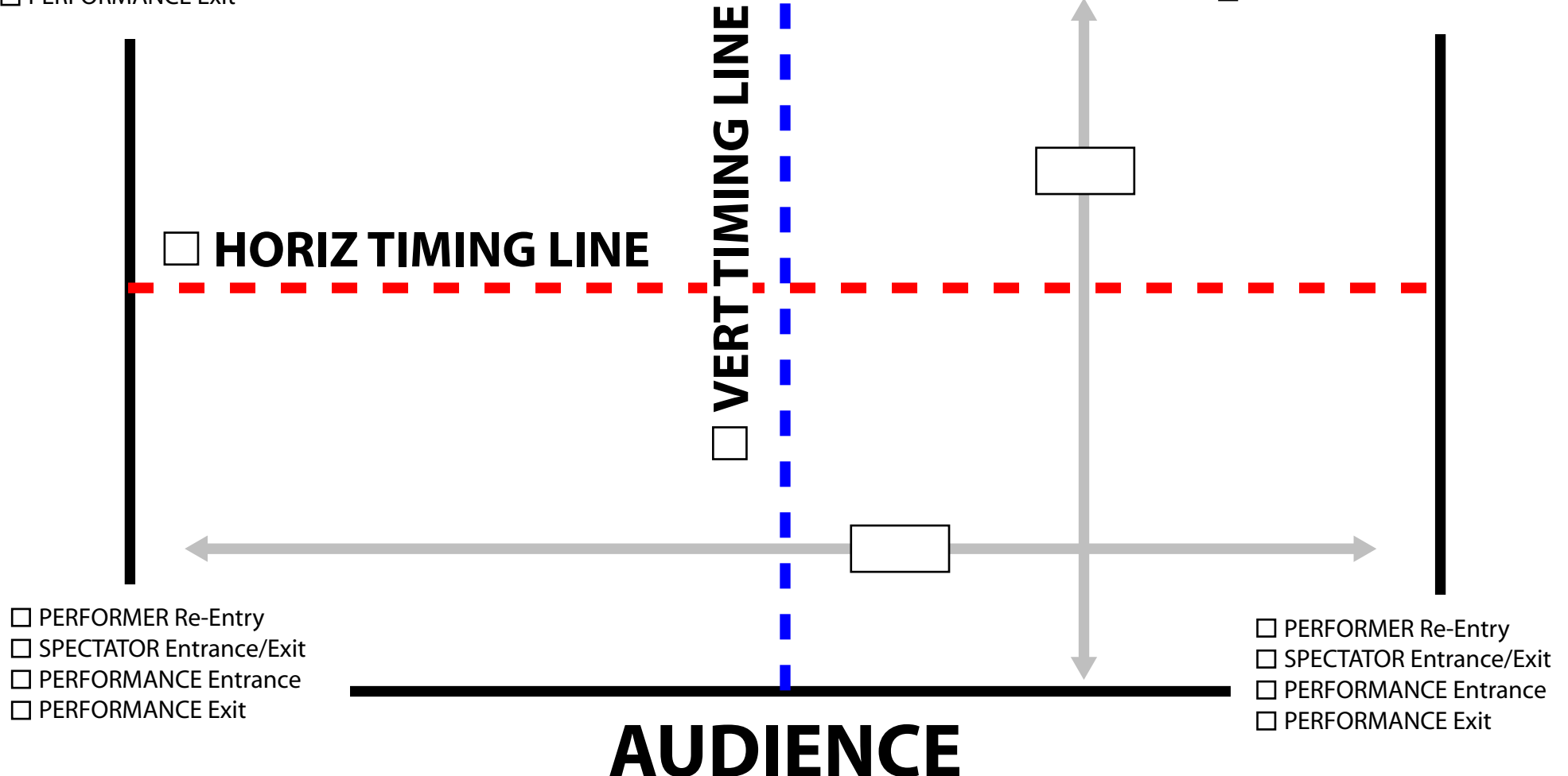
1 - Check the boxes to show entrances and exits for spectators, performers and the performances.

2 - Check the box for either Horizontal or Vertical Timing Line.

3 - Enter the gym floor dimensions in the text boxes on the gray arrows. Be sure to measure from wall to wall for width and front row to front row of the bleachers.

- ☐ PERFORMER Re-Entry
- ☐ SPECTATOR Entrance/Exit
- ☐ PERFORMANCE Entrance
- ☐ PERFORMANCE Exit

- ☐ PERFORMER Re-Entry
- ☐ SPECTATOR Entrance/Exit
- ☐ PERFORMANCE Entrance
- ☐ PERFORMANCE Exit



Performance Entrance

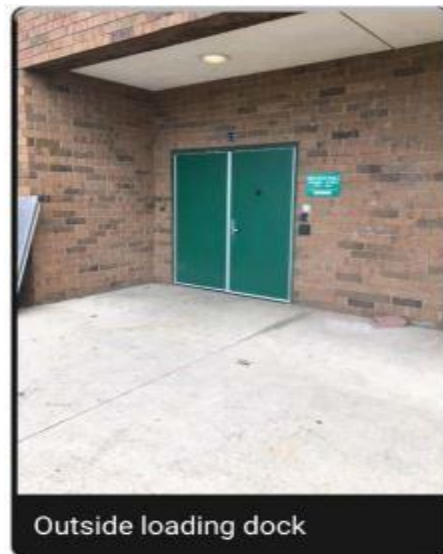
****Note:** I apologize, the picture does not show the bar removed, but it is removable (have done many times for past hosting of shows). I tried several times to get a pic w/bar removed, but there were always events going on.



PERFORMANCE GYM

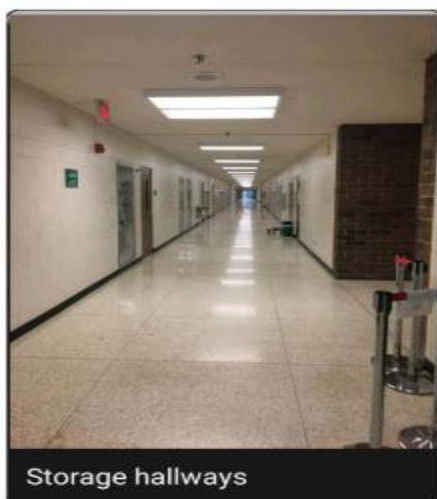


Outside AND Inside Loading Dock





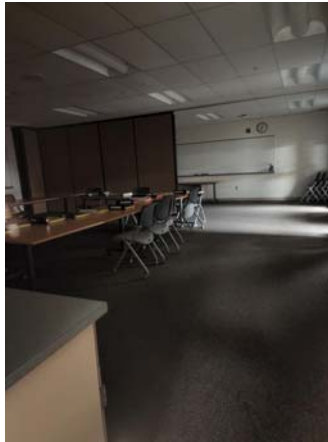
For lining up equipment...



Visitor Entrance



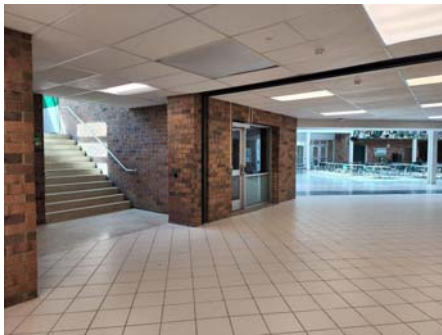
Critique & Judges Area



Tarp Folding



Connection from tarp folding to homeroom stairway



Concessions Area

