

Dear Unit Directors and Staff,

We are so thrilled to have you registered for our 5th annual WGAZ invitational. Included in this packet is a map of the school, a map of the flow from warm-up gym to performance, a map of our gym, and a list of concessions and prices. Please remember that you cannot pull your competition floors out to warm up on outside unless there is a practice floor underneath. Tickets will be \$8 per person with children ages 3 and under free. Each ensemble will receive 7 wristbands in their welcome packet. Additional wristbands are available for purchase if you need more than 7. If you have any questions please feel free to contact Sharnell White at 623-670-1084, Gerry McKinnon at 602-622-3185, Dave Coryell at 610-329-0469 or Anne Coryell at 610-405-7505.

Sincerely,

Anne Coryell

Buckeye Union High School

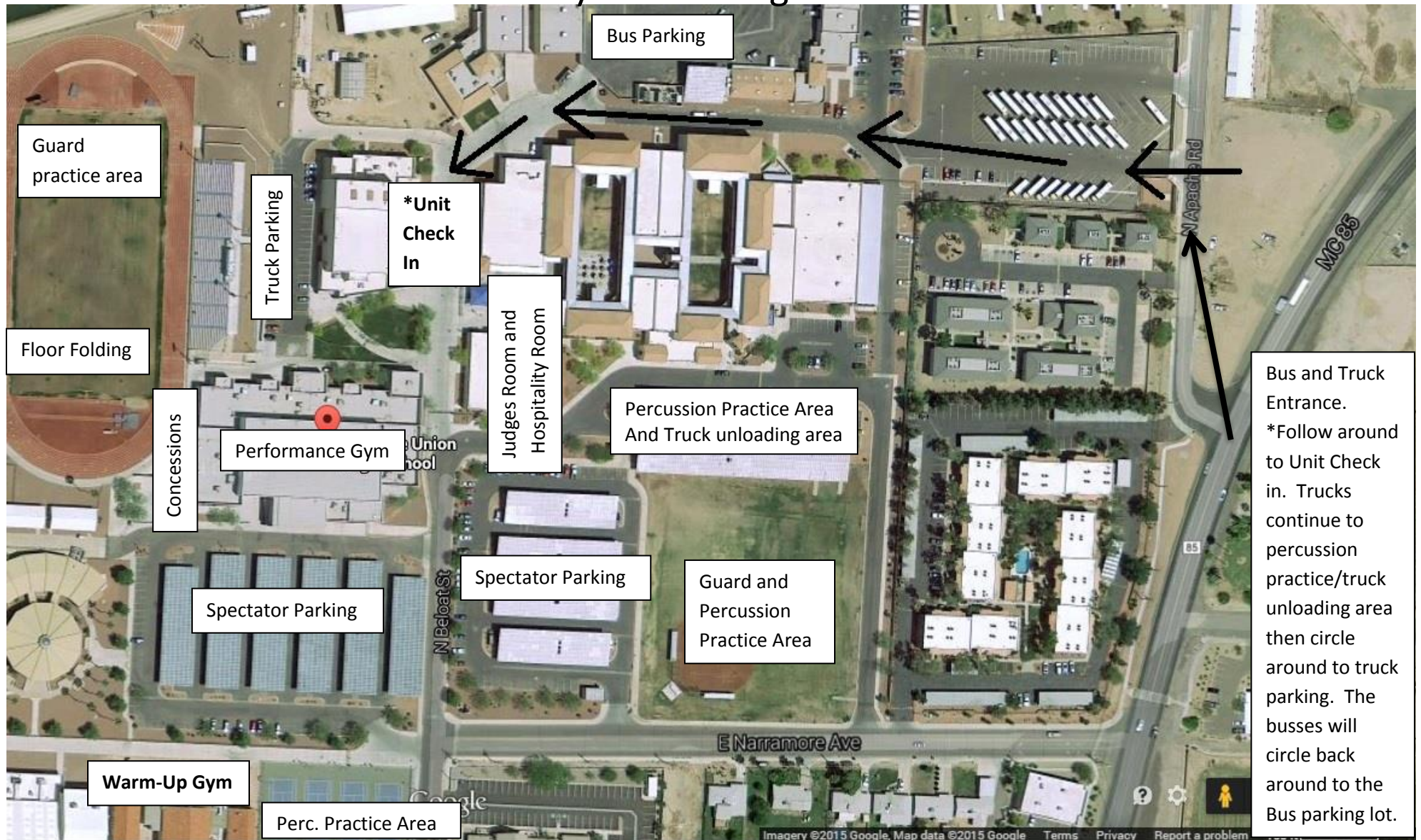
Color Guard Instructor

Buckeye Union High School

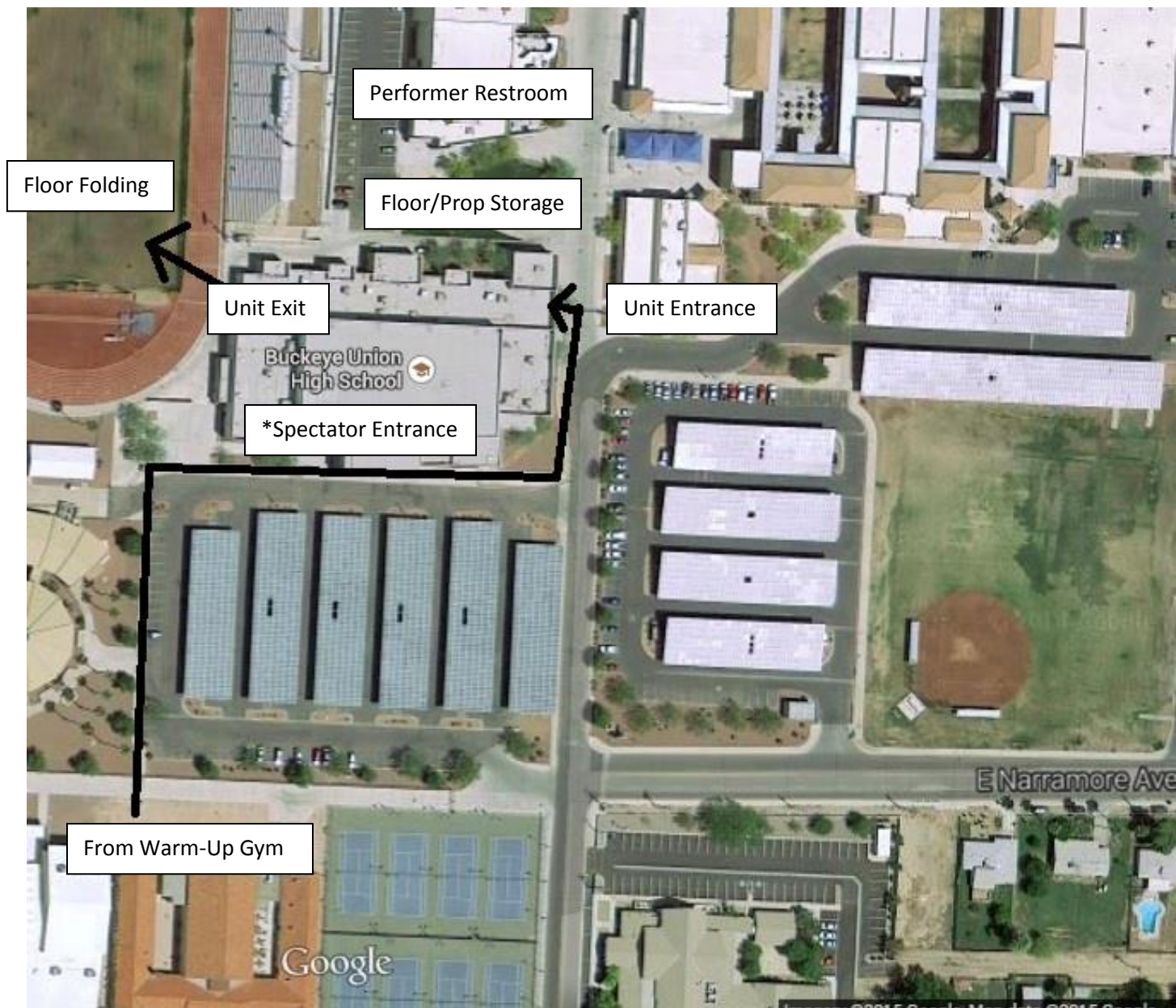
1000 E Narramore Avenue

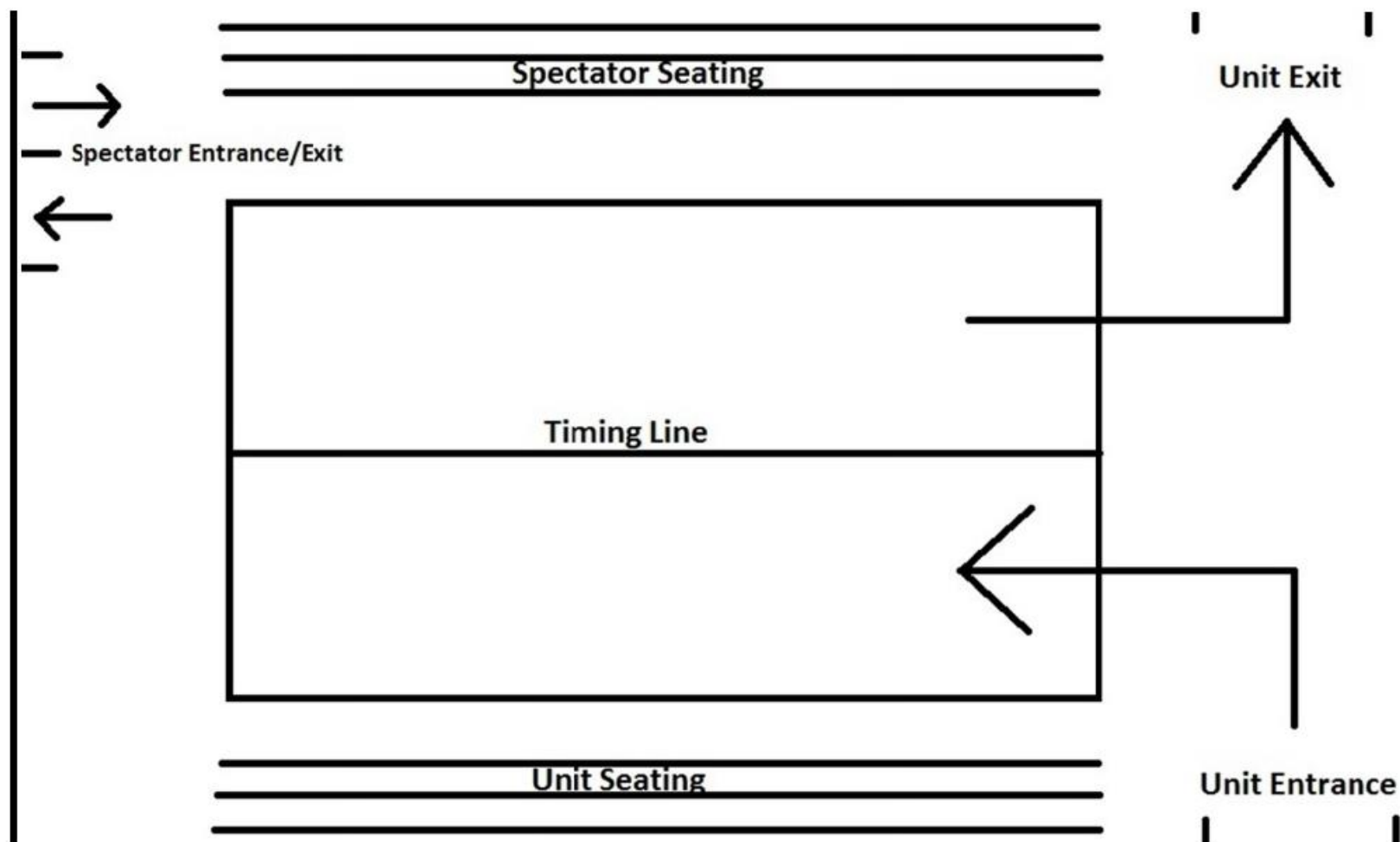
Buckeye, AZ 85326

Buckeye Union High School



Bus and Truck Entrance.
*Follow around to Unit Check in. Trucks continue to percussion practice/truck unloading area then circle around to truck parking. The busses will circle back around to the Bus parking lot.





Please support our organization by visiting the concession stand!

Barbeque Sandwich Combo (Sandwich/Chips/Soda or Water)	\$5.00
Veggie Burger Combo (Burger/Chips/Soda or Water)	\$5.00
Hot Dog Combo (Hot Dog/Chips/Soda or Water)	\$4.00
Barbeque Sandwich	\$3.00
Veggie Burger	\$2.00
Hot Dog	\$2.00
Nachos	\$3.00
Chips	\$1.00
Candy	\$1.00
Pickles	\$1.00
Soda or Water	\$1.00
Gatorade	\$2.00

*Kona Ice will be on site.

*Air grams, flower grams, and candy grams will be available for purchase in the lobby.