



Color Guard Focus Show @ Gilbert HS

Contest Information

Friday & Saturday, March 3 & 4, 2023

LOCATION

Gilbert High School
1101 E Elliot Rd
Gilbert, AZ 85234

EMERGENCY CONTACT (DAY OF SHOW ONLY)

Contest Administrator: Danielle Dorks-Gray 602.451.1141
Event Partner: Ron Andre (Band Director) 602.628.7837

FAN PARKING

Fan parking is located in the Student Parking Lot (East entrance to the school. Lakeview Dr.)

BUS/TRAILER PARKING

Bus/Trailer is located in the Student Parking Lot (East entrance to the school. Lakeview Dr.)

CHECK IN & VIDEO

There will be a station just inside the performance gym lobby.

A unit representative must check in and pick up a unit packet that will contain wristbands for both staff and performers.

Directors will be given 7 wristbands for admission to the event. Additional staff/parent helper passes can be purchased at the through GoFans.

There is **NO** video recording or flash photography allowed.



PASSES

Units will be given 7 staff wristbands in addition to the performer wristbands for entrance passes. These will be distributed at Unit Check-in. Your unit badges **WILL** be recognized this year. **PLEASE REMEMBER YOUR BUS/TRUCK DRIVERS!**

- To prevent a delay in show, WGAZ asks that all performers, staff and parent/volunteers to be wearing their wristbands at all times during WGAZ Events.
- WGAZ is requesting anyone wearing a performer wristband to sit in their designated areas while inside.

WARM UP

Color Guard official body warm up is located in the cafeteria and official equipment warm up is located in the auxiliary gym.

Units may **NOT** open performance floors on the outdoor courts or parking lots. Please refer to the maps provided for specific warm-up locations.

STAFF VIEWING LOCATIONS

There will be one staff viewing area located at the top of the bleachers. There is to be no sitting on the stairs or aisles.

The staff viewing area is reserved for staff of the currently performing unit's performance. After your unit has performed, please find an alternate seating location to enjoy other performances.

PERFORMANCE ENTRANCE

The performance entrance is on the west side of the performance gym directly from the auxiliary gym.

PERFORMANCE EXIT

Units will exit through the doors located on the east side of the performance gym through the main lobby. They will then proceed to the floor folding area located on the grass field.

DIRECTORS HOSPITALITY

There will be a hospitality area located in the faculty lounge.



CONCESSIONS

There will be full concessions located outside the performance gym.

Cash and cards will be accepted | *No food is allowed in the Gym.*

RESTROOMS

Performer restrooms are located north of the performance gym. (Locker rooms by fan's restrooms)

WATER

WGAZ highly encourages you to provide water for your performers.

TICKET SALES

General Admission - \$10

5 and under – Free

WGAZ is ready for the new indoor season and excited for all the events to come. To ensure students, staff, and fans are safe and can easily access events, we have partnered with GoFan to provide digital tickets and contactless payments. To buy tickets, visit our GoFan page. <https://gofan.co/app/school/AZ86318%E2%80%8B>

Please note:

- Check standard schedule of the event to confirm ticket purchases.
- Ticket purchases will be online or through a QR code only
- Show proof of tickets on GoFan App to receive a wristband
- Masks are highly encouraged at WGAZ events.
- Limited seats will be available

WGAZ recommends all fans to arrive 30 minutes before units performance

COMPETITIONSUITE DETAILS

ACCESSING YOUR GROUP - <https://help.competitionsuite.com/article/16-accessing-your-group>

ADDING YOUR STAFF - <https://help.competitionsuite.com/article/61-adding-staff-members>

ACCESSING COMMENTARY - <https://help.competitionsuite.com/article/17-accessing-commentary>

MUSIC UPLOADS - <https://help.competitionsuite.com/article/74-uploading-performance-music>

Score Summary Sheets are also located in your CompetitionSuite account with your overall score.



JUDGE PANEL

FRIDAY BLOCK 1

Equipment: Alex Franco
Movement: Brent Dunn
General Effect: Sarai Johnson, Joyce Loughrige
Design Analysis: Scott Montoya
Chief Judge: Scott Montoya

SATURDAY BLOCK 2

Equipment: Alex Franco
Movement: Brent Dunn
General Effect: Sarai Johnson, Joyce Loughrige
Design Analysis: Scott Montoya
Chief Judge: Scott Montoya

SATURDAY BLOCK 3

Equipment: Tim Hudnall
Movement: Jonathon Brown
General Effect: Rob Jett, Keith McKeachie
Design Analysis: Anthony Riederer
Chief Judge: Scott Montoya

EVENT STAFF

Contest Admin: Danielle Dorks-Gray
T&P: Robin Montoya
Sound Engineer: Shawn Shive, Aaron Hudson
Tabulator: Sal Franco-Garcia

Judge and Staff assignments and schedules subject to change

ARIZONA'S #1 APPAREL PROVIDER FOR THE MARCHING ARTS



WHERE WE CUSTOMIZE YOUR STYLE

SCREEN PRINTING AND EMBROIDERY

CUSTOM VINYL PROPS

BAND JACKETS

QUICK TURN
AROUND TIME

SHOW SHIRTS

STAFF POLOS

FUNDRAISING
OPPORTUNITIES

www.MVPapparel.us

EMAIL

Info@MVPapparel.us

CALL

480-808-1MVP



SITE:

Gilbert High School
1101 E Elliot Rd
Gilbert, AZ 85234

DIMENSIONS: 100' X 60'

FRONT SIDE BLEACHER ROWS: 22

SEATING CAPACITY: appx 1800

APPROXIMATE CELING HEIGHT: appx 40 ft

There are no stairs to contend with in the competition area.

There are retractable hoops above the competition floor.

Units do not enter the competition area directly from outside.

There is electrical power available at the front and back sidelines.

Units exit the competition area through a hallway to the outdoors.

There is no indoor prop storage available before your performance.

There is a designated fold the floors area outside the exit after the performance.

There will be a black, appx 60'X90', vinyl tarp with covering the performance gym floor.

The distance from the outdoor warm up area to the competition area is less than 10 minute.

The distance from the indoor warm up area to the competition area is less than 2 minute.

There is separate areas for body and equipment.

WARM UP AREAS

See Map

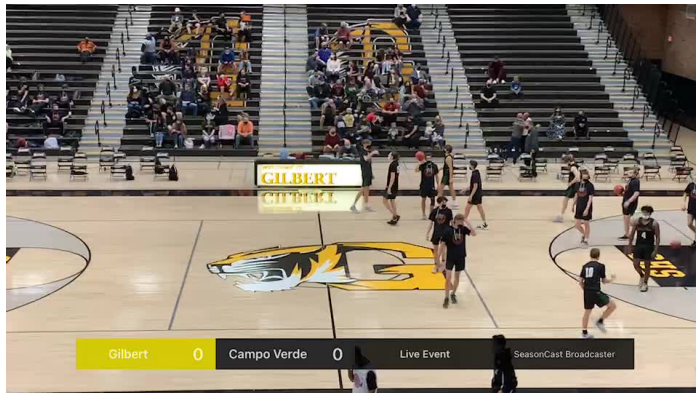
Official body warm up – Cafeteria

Official equipment warm up – Auxiliary Gym

WGAZ

PERFORMING ARTS

PERFORMANCE GYM SPECTATOR VIEW:



PERFORMANCE GYM PERFORMER VIEW:



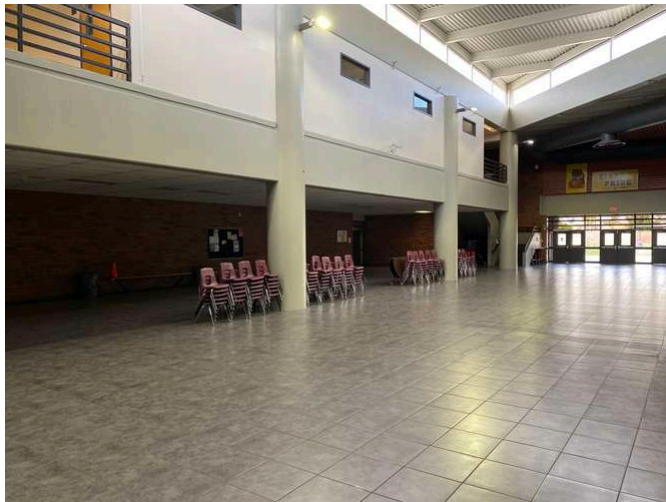


PERFORMING ARTS

EQUIPMENT WARM UP – AUX GYM



BODY WARM UP – CAFETERIA



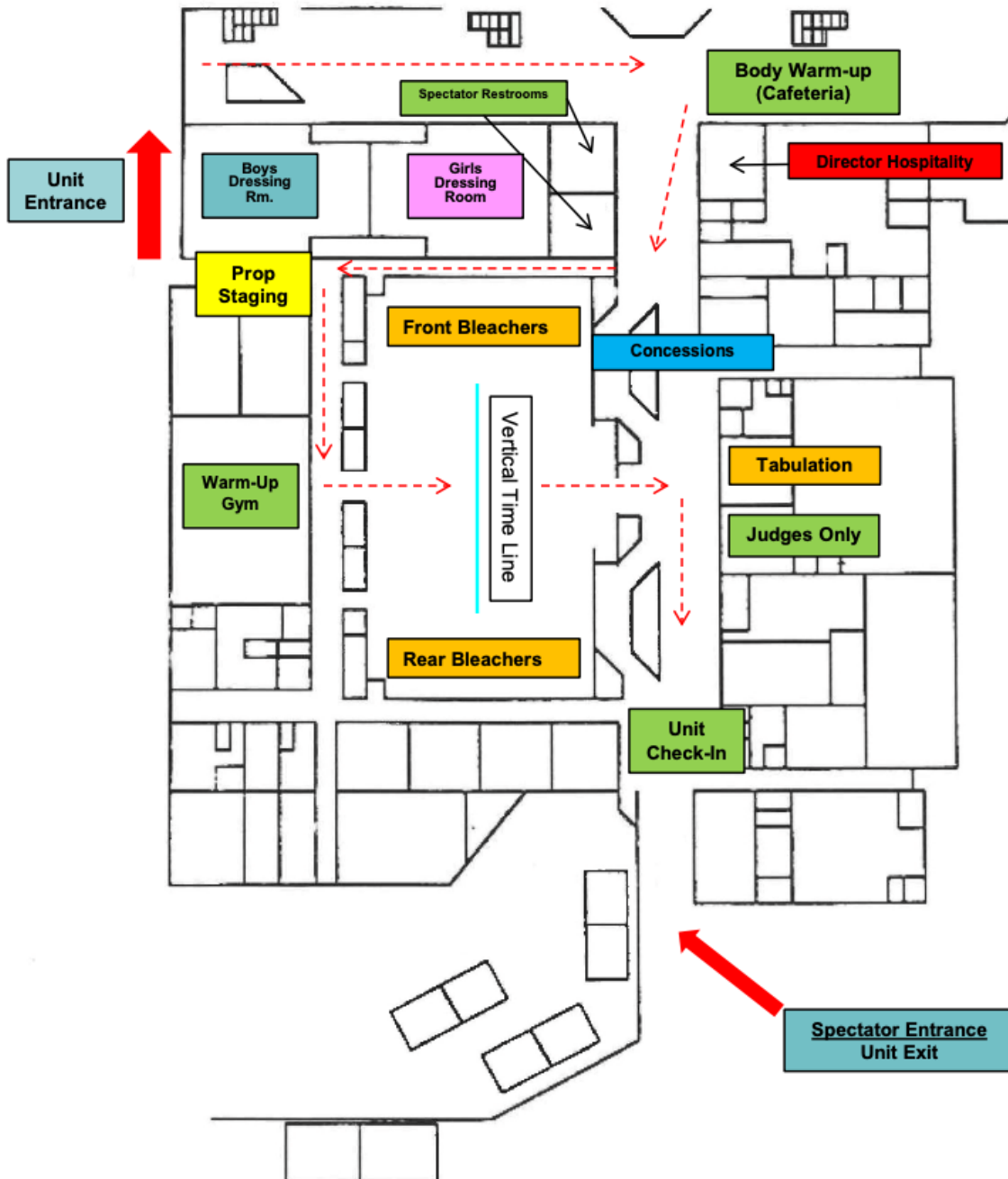


OUTDOOR WARM UP

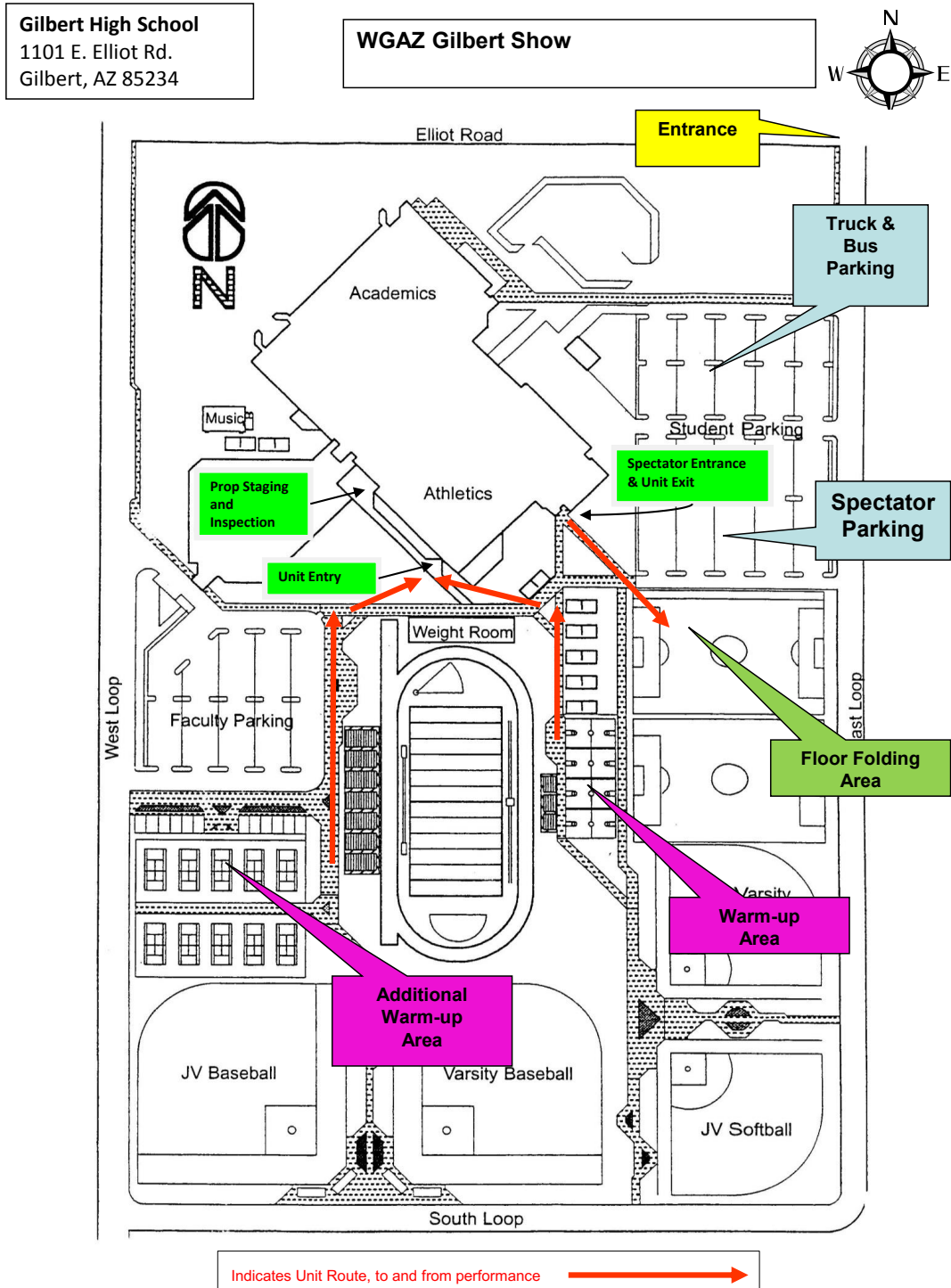


GILBERT HS PASSAGEWAY

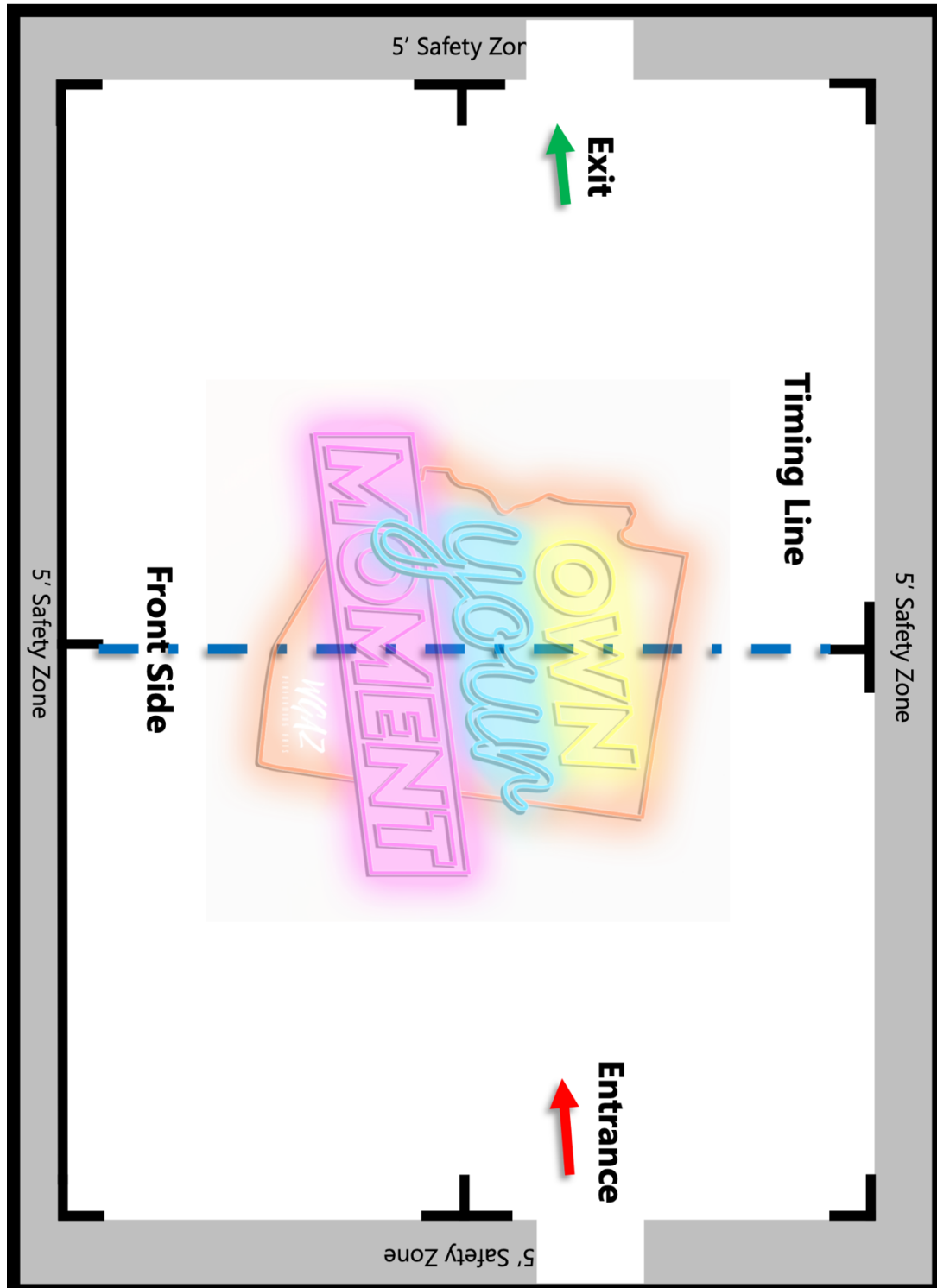
Gilbert High School Gym Interior



GILBERT HS CAMPUS MAP



FLOOR FOLDING MAP





From the WGI Policy Manual

4.120 Sound Policy (Color Guard)

- All color guards should do a sound check at the designated times provided in the contest information packet to ensure the playability of any device or CD. Color guards should check the soundtrack at multiple places in the music to verify playability of any device
- Color guards should still do a sound check if they are using the WGI Music Upload in CompetitionSuite to ensure everything is correct.
- Color guard is responsible for providing the method that the music will be played, e.g. CD, MP3, computer, etc. Each color guard should have two methods to play their soundtrack in the event one does not work.
- Color guard must provide their music in a timely manner to the designated sound operator. Any delay in providing music is the responsibility of the color guard.
- Color guards using the Music Upload process through CompetitionSuite should have a backup using another device type such as an MP3 player, iPhone, or CD.
- Color guard must have a designated person at the sound table to operate any device provided to play music such as MP3 players or computers. Guard's representative is responsible to set up and play device. If a CD is provided, the color guard representative must instruct the sound operator as to what track or other relevant information is needed to start the music when directed by the contest Timing and Penalty judge or after the color guard's introduction.
- If the color guard has an issue with the music such as music is too soft, it begins in the wrong place or skips, the color guard's representative must make the decision to stop the music and tell the operator to stop the music. If the color guard representative chooses not to stop and the color guard completes their performance, the color guard will not be offered an opportunity to perform again.
- Interval timing will continue as the color guard resets and begins again. The Contest Administrator has the sole discretion in waiving any timing penalty due to the restart. If the stoppage is due to faulty sound equipment, operator error or an unexplained reason, overtime penalty may be waived.
- Issues related to the equipment provided by the color guard, quality of the CD or the color guard's representative error (using wrong playlist on MP3, etc.) will result in the actual interval timing being used and penalties, if any, being assessed.
- Volume direction must come from the color guard representative at the sound table. Direction will not be taken from the audience viewing area or across the floor. Final volume discretion is given to the sound operator based on their equipment and the Chief Judge who ultimately determines an appropriate volume level.
- The color guard representative may provide direction to the sound operator during the performance regarding equalization.
- It is the responsibility of the color guard to provide their music for each performance and to ensure that their soundtrack is working appropriately. CDs may not be left at sound table between performances.
- Under no circumstances will verbal abuse of the sound operator be tolerated. Penalties will be assessed per current WGI rules

2023 Director/Volunteer of The Year

Each year, WGAZ honors:

Colorguard Director of The Year

Percussion/Winds Director of The Year

Volunteer of the Year

These individuals are outstanding members of the community who have made an impact on the lives of their students and those around them. Their dedication to the activity, their unit, and their students go above and beyond.

To show their impact, the nomination must be accompanied by a letter of recommendation, and at least two student testimonials.

Nominate a Director: <https://forms.gle/m2ktVuEzSD7ZS8R18>



Nominate a Volunteer: <https://forms.gle/xzJedb4r1QNACdep9>



More info:

<https://wgaz.compsuite.io/2023-Nomination-for-Director-and-Volunteer-of-the-Year-Now-Open>

2023 WGAZ Scholarship

WGAZ is looking for scholarship applicants for the 2023 season! We encourage all current seniors and college students to submit their applications.

For more information please contact Amy Kochis at scholarship@wgaz.org.

This application process requires the applicants to sign in with a valid G-Mail account.

Each applicant must provide the following in PDF Format:

Two (2) letters of recommendation from individuals other than the group director
High School and/or College Transcript
SAT/ACT Scores OPTIONAL

Please have these items ready before completing the form as they will need to be attached when filling it out.

Applications are **due March 16th, 2023**.

Apply here: <https://goo.gl/forms/RYCt0xEK55LKUh0j1>



More info: <https://wgaz.compsuite.io/2023-Scholarship-Application>