



Directors & Instructors:

Welcome to the 2020 Sahuarita High School Winter Arts Invitational held on Friday, February 21st, 2020. Please review the attached information, and flow maps, to ensure a smooth and successful event for your unit. If there are any questions on show flow, please refer to the attached maps. Thank you for attending our show, and we hope you and your unit(s) have a fantastic experience and performance!

Show Site Address:

Sahuarita High School
350 W Sahuarita Road
Sahuarita, AZ 85629

Directions:

From I-10/I-19:

Head south on I-19, Take Exit 75 (Sahuarita Rd), Turn Left/East on Sahuarita Rd, Go through the light at Desert Gem Rd and turn Left (follow WGAZ signs)

From Houghton or Nogales Hwy:

Head West on Sahuarita Rd, go through the light at La Villita Rd, then take the next Right (follow the WGAZ signs).

Admission:

General admission - \$8.00

Children 5 & Under – Free

All performing units will be given 7 wristbands for your staff and parent helpers.

ALL ADDITIONAL HELPERS MUST PURCHASE A WRISTBAND,
even if just helping push equipment onto the floor.

Spectator Parking:

Spectator Parking is located in the **SHS Student Parking Lot** (see map point E)

Bus/Trailer Parking:

All buses must drop off students in the **SHS Student Parking Lot** (see map point E).

Additional spectator parking is available in **SHS Staff Parking Lot** (see map point F).

Practice Floors and Timing Line:

Per WGAZ policy, units are not permitted to open performance floors in the warmup areas. You may use a practice floor only and it **must** be clearly marked "practice". If you are using a practice floor in the lot, please be courteous of lot space for other units.

Warm-ups:

Percussion units should utilize the equipment/bus parking lot for warmups. Guards are welcome to use the courtyard if warming up before their warm-up slot. Guard warm-up will take place in the SMS Gym or the SHS Cafeteria.

Door Dimensions:

Both performer entry points to the gym are double-door with the bar removed. The dimensions for each door opening is 68"x96".

Check In & Video:

There will be a station near the parking lot for unit check-in. A unit representative must check in and pick up a unit packet that will contain wristbands for both staff and performers. Each unit will receive 7 staff wristbands in their packet. **There is no video recording or flash photography allowed.**

Concessions:

Please let your students and parents know that there will be a wide variety of concessions available outside of the gym lobby. While food and drink is allowed in the gym, please use the provided garbage bins!

Director & Staff Hospitality Room:

The director and staff hospitality room will be in the **Culinary Cafe**, just northwest of the gymnasium (see map point H). We will have a nice selection of food, snacks, and drinks available throughout the day for our circuit's hard-working educators!

We hope your unit has a great performance!

Please contact me with any show emergencies, questions, or concerns:

Thomas Cervenka

Sahuarita Indoor Percussion Director

(520) 979-9541

tcervenka@sahuarita.net

Kirsten Sparks

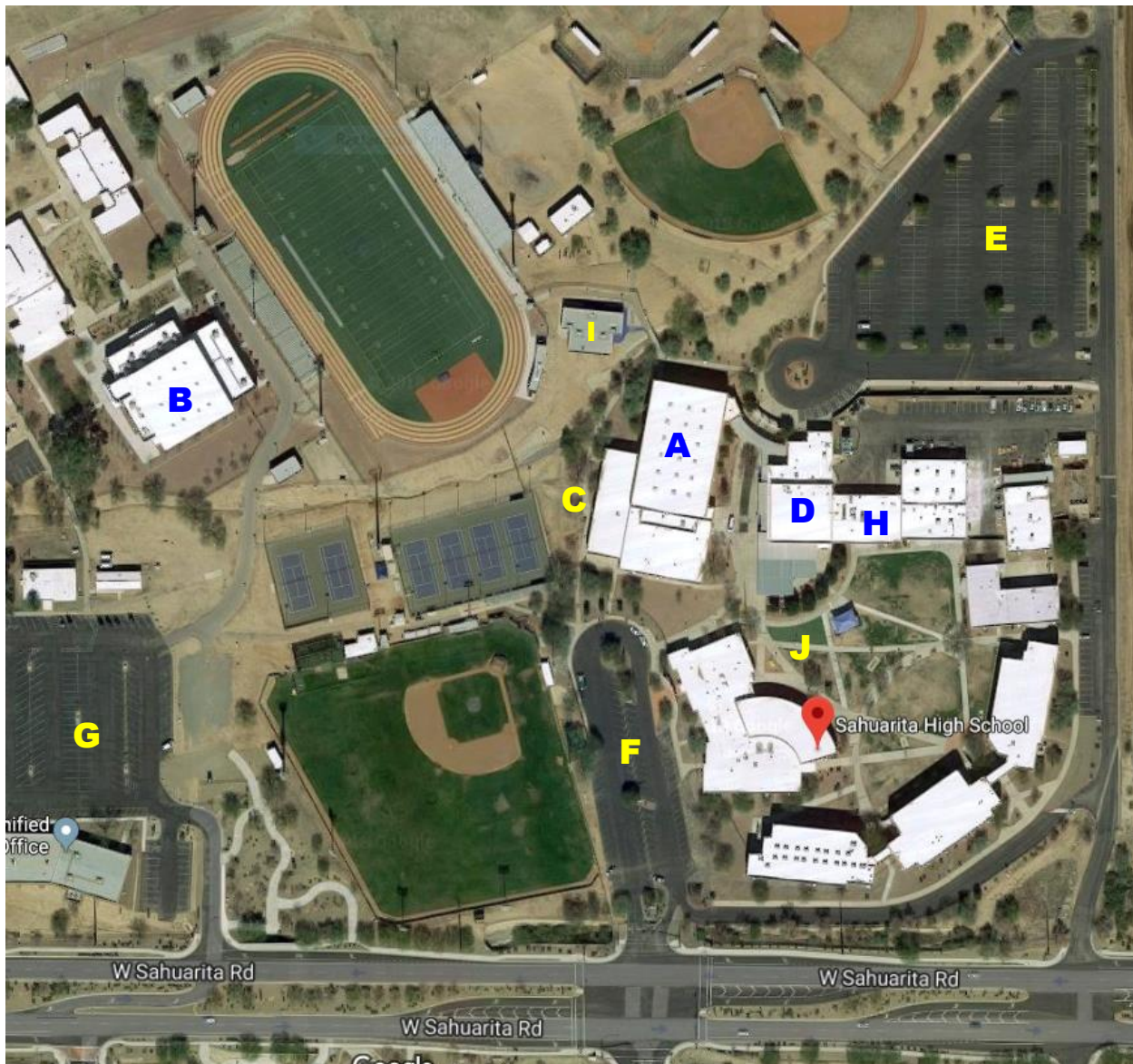
Sahuarita Music Boosters President

(520) 250-9000

president@sahuaritamusic.org

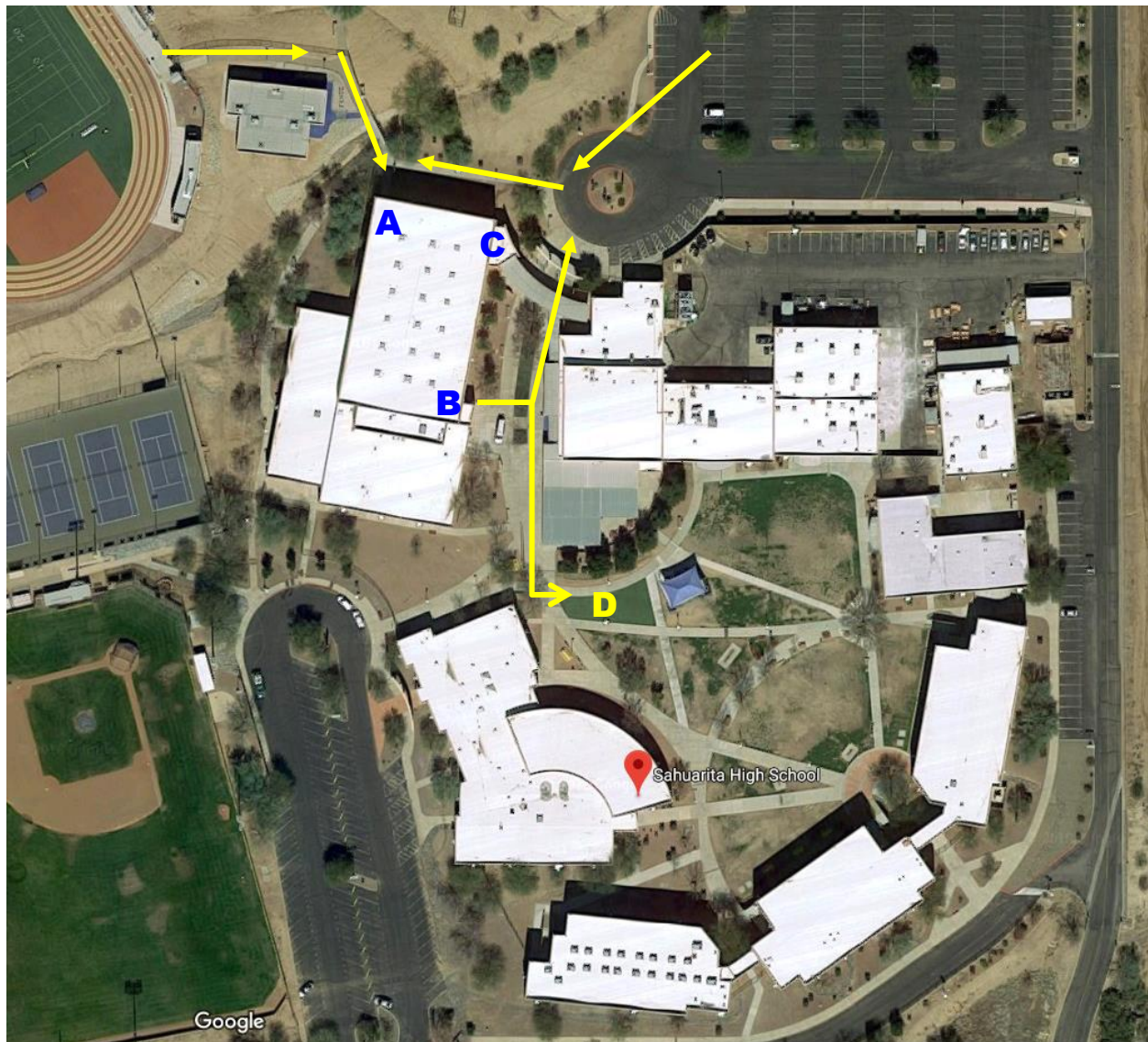


Sahuarita High School
Proposed WGAZ Flow Map 2019-20



- A - Performance Area (Main Gym)
- B – Guard Warm Up (Auxiliary Gym)
- C – Prop Storage Area (sidewalk behind gym)
- D – Dressing Rooms & Bathrooms
- E – Spectator Parking & Percussion Warm Up
- F – Additional Spectator Parking
- G – Bus Overflow
- H – Hospitality (Culinary Café)
- I – Judges Room & Tabulation Rooms (two separate classrooms)
- J – Floor Folding (Courtyard also can be used for warm up)

Sahuarita High School
Proposed WGAZ Flow Map 2019-20

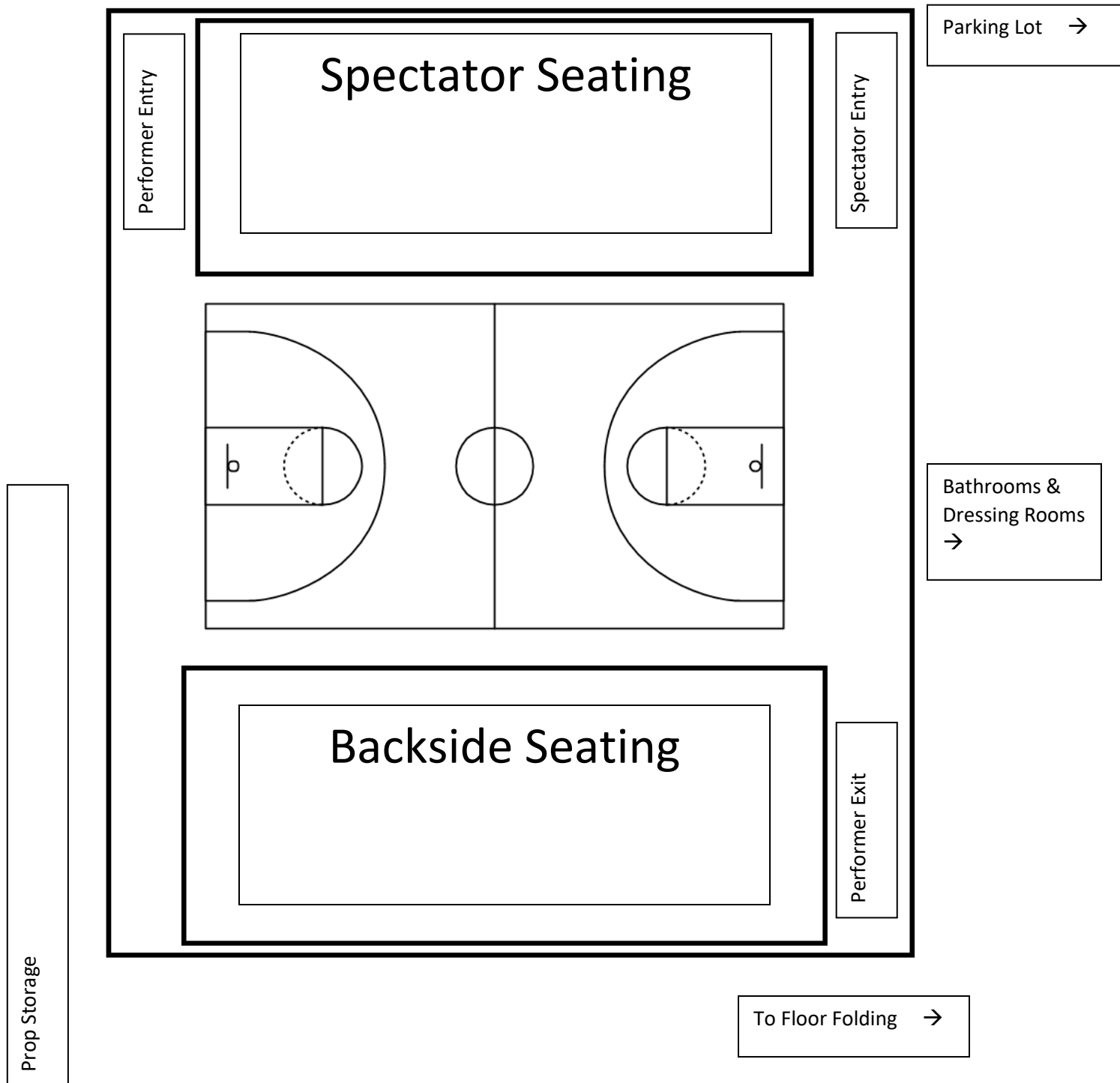


A – Performer Entry

B – Performer Exit

C – Spectator Entry

D – Floor Folding



All doors to the gym are double-doors with removeable center posts.

WGAZ

PERFORMING ARTS

Director and Volunteer of the Year!

Spread
the
word!

WGAZ is introducing a new tradition starting in 2020! A Director of the Year Award will be offered in this upcoming season for each category; Colorguard, Percussion, and Winds. Any member of WGAZ can nominate a director, but we ask that you consider the following guidelines:

- Must be a current director of a Colorguard, Percussion, or Winds program in good standing with WGAZ
- Goes above and beyond required duties *of* a program director
- Inspires growth within students inside and outside the activity
- Consider Ensemble growth
- Can be nominated by students, staff, or other directors
 - Requires testimonial from at least two current students/members in the program

Nominate at
www.wgaz.org

WGAZ

PERFORMING ARTS

2020 Scholarship Application!

WGAZ is looking for scholarship applicants for the 2020 season! We encourage all current seniors and college students to submit their applications. New for this year will be an added 45-60 second video showcasing applicants talents. For more information please contact [Amy Kochis](#).

- This application process requires the applicants to sign in with a valid **G-Mail account**.
- Each applicant must provide the following in PDF Format:
Two Letters of recommendation from individuals other than the group director. High School and/or College Transcript. SAT/ACT scores are optional.
- **PLEASE HAVE THESE ITEMS READY BEFORE COMPLETING THE FORM AS THEY WILL NEED TO BE ATTACHED AT TIME OF COMPLETION.**
- **The 2020 Scholarship Application is now available.**
Applications are due March 6th, 2020.

Spread
the
word!

Apply at
www.wgaz.org



WGAZ

PERFORMING ARTS

"AND WE CAN BE FAR AWAY OUT ON OUR OWN
AND MAKE THE STARLIGHT INTO A HOME..."

BROKEN CITY

SUNDAY MORNING

MAR 8

2020



GILBERT, AZ
WILLIAMS FIELD HS

A CLINIC FOR
INSTRUCTORS
AND STUDENTS





ATTENTION

ALL **WGAZ** GROUPS
MARCHINGAPPAREL.COM
IS THE OFFICIAL APPAREL PROVIDER & PARTNER
OF WGAZ AND IS HERE TO SERVE YOU

CONTACT US

FOR ALL YOUR APPAREL NEEDS

WHO WE SERVICE

- * Drum & Bugle Corps
- * Junior High School Bands
- * High School Bands
- * College & University Bands
- * Concert Event Apparel
- * Music Educator Associations
- * Marching Arts Associations & Circuits

SERVICES WE OFFER

- * Racer Backs
- * Compressions Tees
- * Dri-Fit Tees
- * Polos
- * T-Shirts
- * V-Necks
- * Long Sleeves
- * Tank Tops
- * Jerseys
- * Jackets
- * Pullover Hoodies
- * Zipper Hoodies
- * Shorts
- * Hats
- * Beanies
- * Bags
- * Backpacks
- * Sweatshirts
- * Sweatpants
- * Track Suits
- * Spirit Wear
- * Work Wear
- * Events Apparel
- * Private Apparel Line

