



## **Buckeye UHS Contest Information Saturday, April 1, 2023**

### **LOCATION**

Buckeye Union High School  
1000 E Narramore Ave  
Buckeye, AZ 85326

### **EMERGENCY CONTACT (*DAY OF SHOW ONLY*)**

Contest Administrator: Karen Herrera 480.313.7244  
Event Partner: Sharnell White (Band Director) 623.670.1084

### **FAN PARKING**

Fan/Staff Parking: Located on the south side of the performance gym east of Beloit St.  
(please see map)

### **BUS/TRAILER PARKING**

Bus/Trailer Parking: Located on the northeast side of campus in the bus lot. Busses and trucks will pull onto campus on Beloit St. Stay to the right side of traffic and pull through to unit check in. (please see map)

### **CHECK IN & VIDEO**

There will be a welcome tent in bus lane between school cafeteria and Performing Arts Center (east of stadium).

A unit representative must check in and pick up a unit packet that will contain wristbands for both staff and performers.

Directors will be given 7 wristbands for admission to the event. Additional staff/parent helper passes can be purchased at the through GoFans.

There is **NO** video recording or flash photography allowed.



## **PASSES**

Units will be given 7 staff wristbands in addition to the performer wristbands for entrance passes. These will be distributed at Unit Check-in. Your unit badges WILL be recognized this year. PLEASE REMEMBER YOUR BUS/TRUCK DRIVERS!

- To prevent a delay in show, WGAZ asks that all performers, staff and parent/volunteers to be wearing their wristbands at all times during WGAZ Events.
- WGAZ is requesting anyone wearing a performer wristband to sit in their designated areas while inside.

## **WARM UP**

Percussion/Winds warm up is located around campus. (Please see map)

Units may NOT open performance floors on the outdoor courts or parking lots. Please refer to the maps provided for specific warm-up locations.

## **STAFF VIEWING LOCATIONS**

There will be one staff viewing area located at the top of the bleachers. There is to be no sitting on the stairs or aisles.

The staff viewing area is reserved for staff of the currently performing unit's performance. After your unit has performed, please find an alternate seating location to enjoy other performances.

## **PERFORMANCE ENTRANCE**

The performance entrance is on the east side of the performance gym.

## **PERFORMANCE EXIT**

Units will exit through the doors located on the west side of the performance gym, then proceed to the floor folding area.

## **DIRECTORS HOSPITALITY**

There will be a hospitality area located in the faculty lounge.



## CONCESSIONS

There will be full concessions located outside by the performance gym.

**Cash will be accepted | No food is allowed in the Gym.**

## RESTROOMS

Performer restrooms are located throughout campus. (all will be open)

## WATER

WGAZ highly encourages you to provide water for your performers.

## TICKET SALES

General Admission - \$10

5 and under – Free

WGAZ is ready for the new indoor season and excited for all the events to come. To ensure students, staff, and fans are safe and can easily access events, we have partnered with GoFan to provide digital tickets and contactless payments. To buy tickets, visit our GoFan page. <https://gofan.co/app/school/AZ86318%E2%80%8B>

Please note:

- Check standard schedule of the event to confirm ticket purchases.
- Ticket purchases will be online or through a QR code only
- Show proof of tickets on GoFan App to receive a wristband
- Masks are highly encouraged at WGAZ events.
- Limited seats will be available

*WGAZ recommends all fans to arrive 30 minutes before units performance*

## COMPETITIONSUITE DETAILS

ACCESSING YOUR GROUP - <https://help.competitionsuite.com/article/16-accessing-your-group>

ADDING YOUR STAFF - <https://help.competitionsuite.com/article/61-adding-staff-members>

ACCESSING COMMENTARY - <https://help.competitionsuite.com/article/17-accessing-commentary>

MUSIC UPLOADS - <https://help.competitionsuite.com/article/74-uploading-performance-music>

Score Summary Sheets are also located in your CompetitionSuite account with your overall score.



## **JUDGE PANEL**

### **PERCUSSION/WINDS**

Music: Lauren Teel

Music Effect: JJ Mixdorf

Visual: Mason Tanquary

Visual Effect: Joe Roach

### **EVENT STAFF**

Contest Admin: Karen Herrera

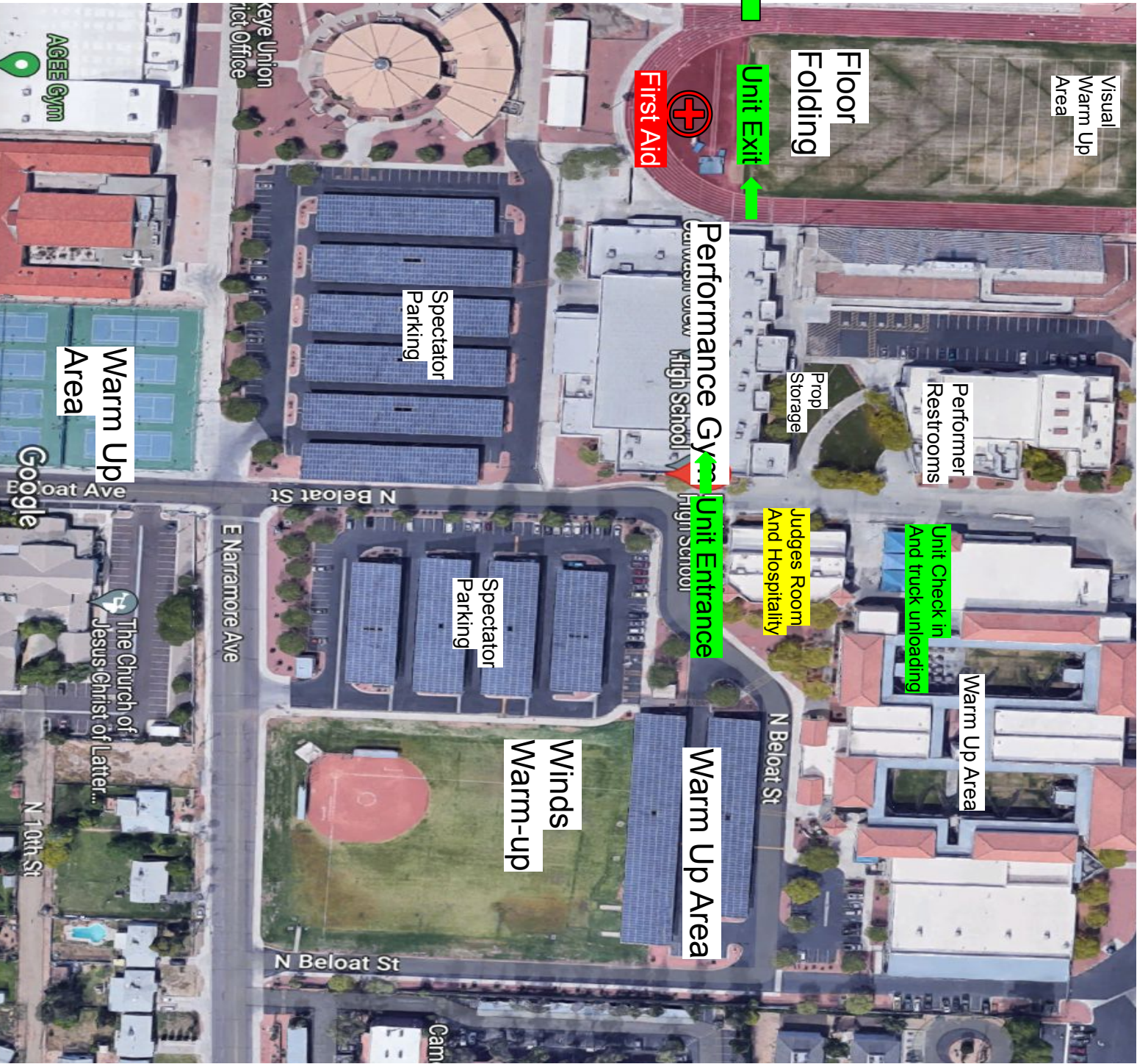
T&P: Robin Montoya

Sound Engineer: Anthony Montoya

Tabulator: Lisa Wrucke

*Judge and Staff assignments and schedules subject to change*





**SITE:**

Buckeye Union High School  
1000 E Narramore Ave  
Buckeye, AZ 85326

**DIMENSIONS:** 110' X 80'

**FRONT SIDE BLEACHER ROWS:** 25

**SEATING CAPACITY:** appx 1,825

**APPROXIMATE CEILING HEIGHT:** appx 40 ft

There are no stairs to contend with in the competition area.

There are retractable hoops above the competition floor.

Units enter the competition area directly from outside.

There is electrical power available at the front and back sidelines.

Units exit the competition area straight to the outdoors.

There is no indoor prop storage available before your performance.

There is a designated fold the floors area outside the exit after the performance.

There will be a black, appx 60'X90', vinyl tarp with covering the performance gym floor.

The distance from the warmup area to the competition area is less than 5 minute.  
(Percussion/Winds)

**WARM UP AREAS**

Units may utilize areas around campus. (see map)



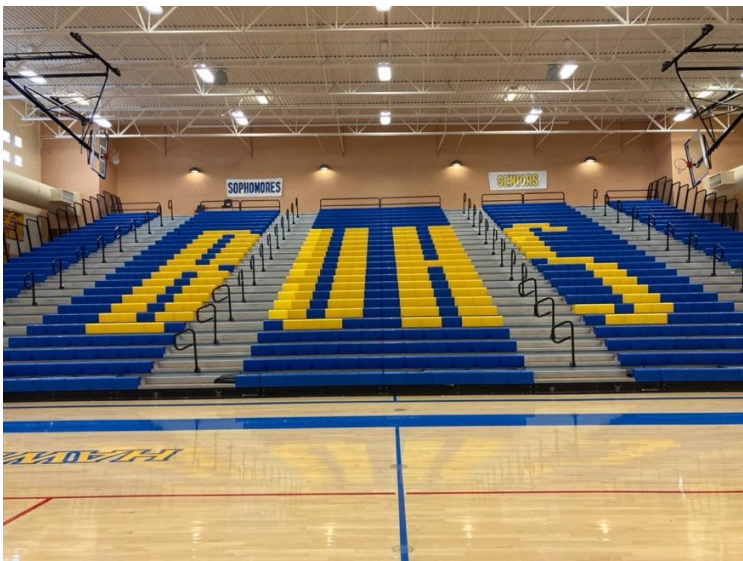
# WGAZ

PERFORMING ARTS

PERFORMANCE GYM-FAN VIEW



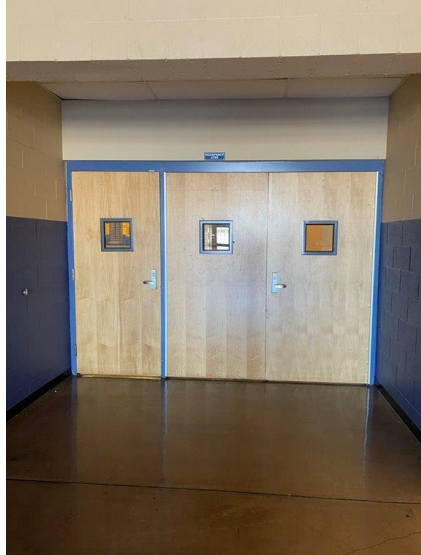
PERFORMANCE GYM-PERFORMER VIEW



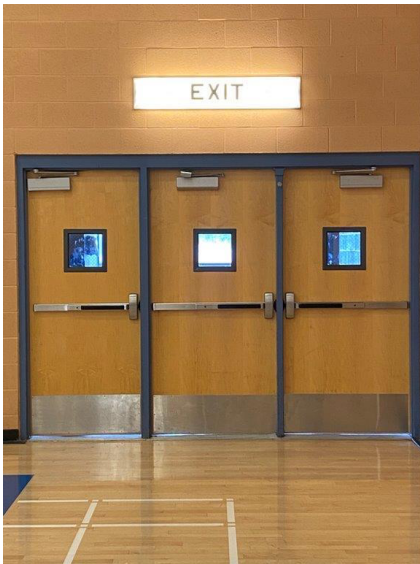


PERFORMING ARTS

PERFORMANCE GYM-PERFORMER ENTRANCE



PERFORMANCE GYM-PERFORMER EXIT





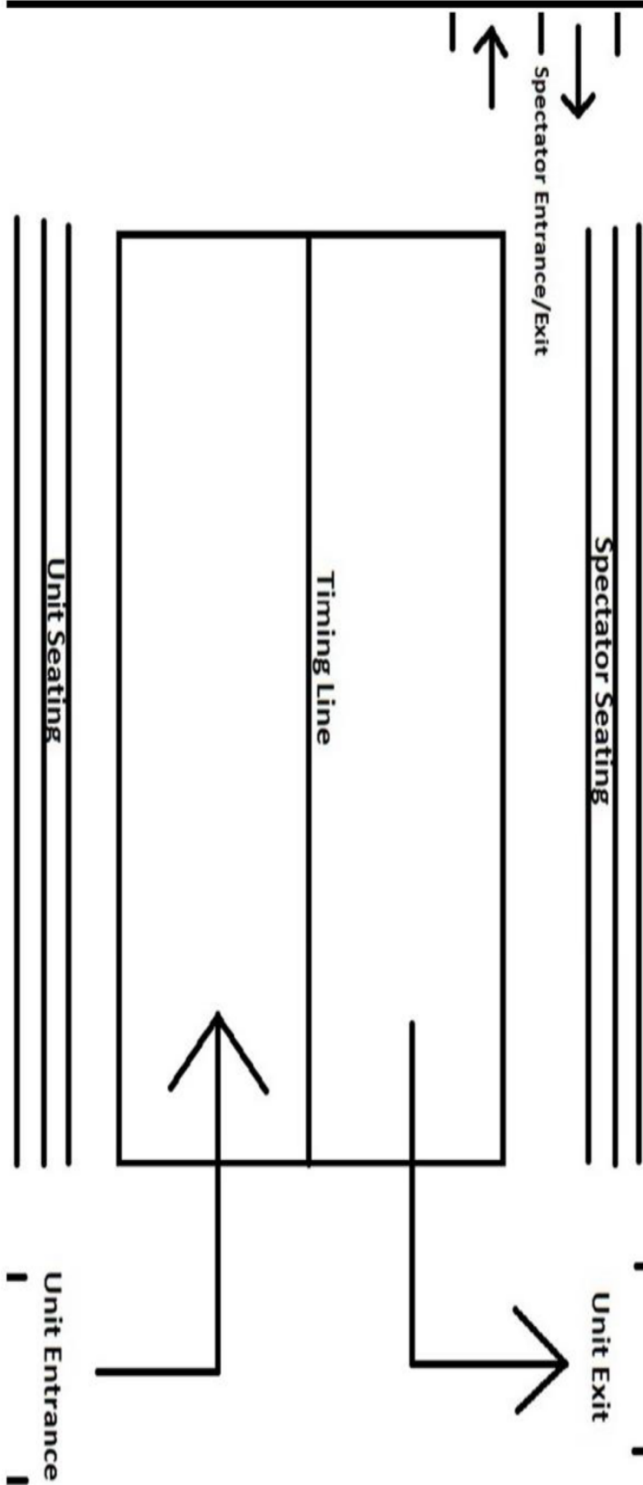
## WARM UP AREA





PERFORMING ARTS

BUCKEYE UHS PASSAGEWAY



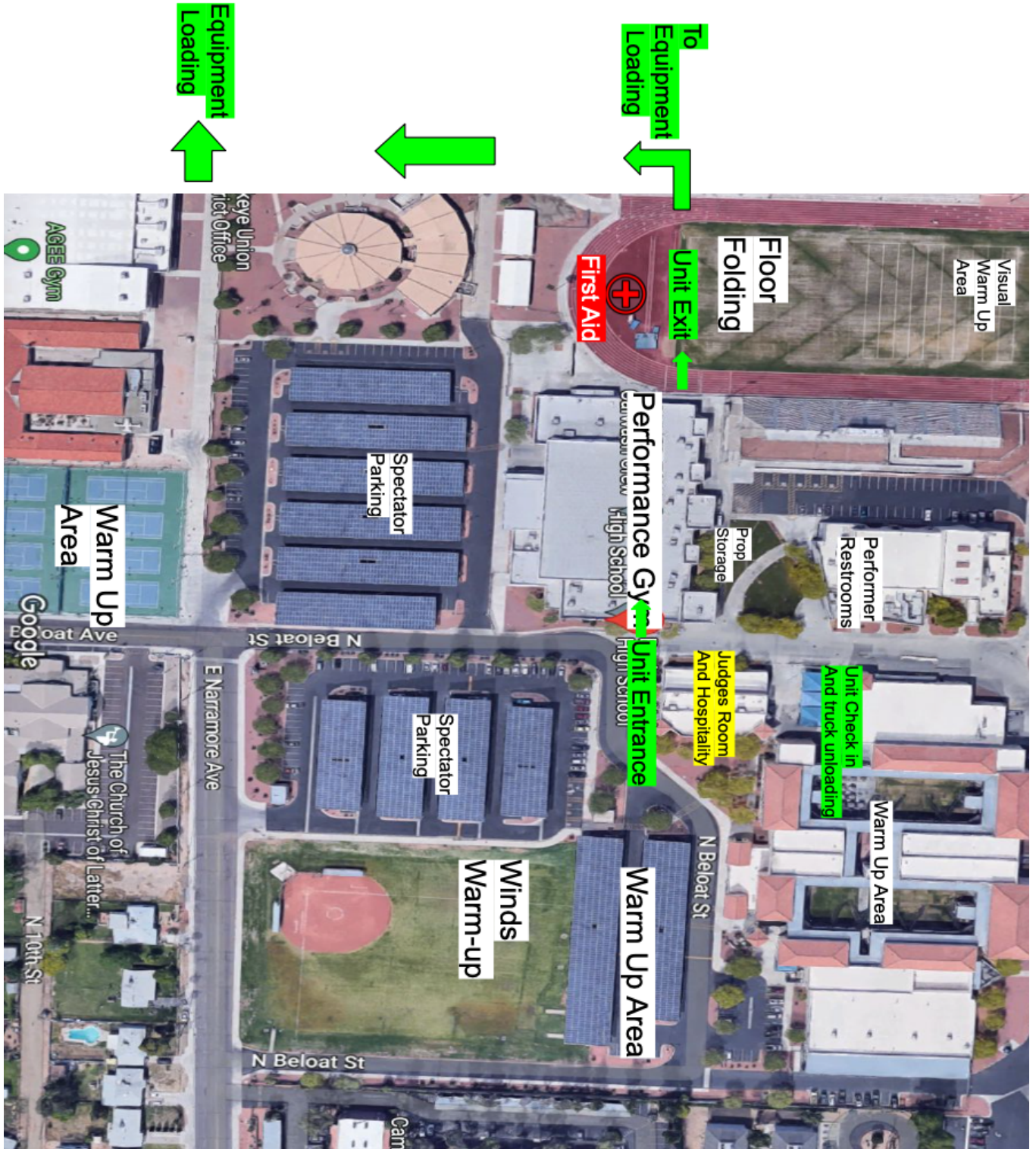




PERFORMING ARTS



## BUCKEYE UHS CAMPUS MAP





# Truck and Bus Flow

