



North Texas Colorguard Association

MARTIN HIGH SCHOOL - SATURDAY, JANUARY 21, 2017

HOST: MARTIN HIGH SCHOOL

LOCATION: 4501 PLEASANT RIDGE RD., ARLINGTON, TX 76016

COST:

\$10 Front Sideline Spectators (Children 7 & under free ~ \$3 floor crew over 8 members)

\$5 Front Sideline Student ID Spectators (HS or College)

JUDGES:

EQ: Robert Solomon

MV: Cheryl Myers

EA: Jim Mahoney

GE1: Mike Stone

GE2: Grady Robertson

CHIEF JUDGE/OV: Ted Wemhoff

T&P: Will Torres

Sound Engineer: Todd Hoeft

Contest Director: Rayanna Hoeft 817-879-6601

COMPETITIONSUITE –

NTCA utilizes the CompetitionSuite system for tabulation and commentary.

Through the unit registration process you should be signed up for CompetitionSuite.

WGI ADJUDICATION MANUALS & RULEBOOKS/NTCA P&P (Policies & Procedures)

The 2017 WGI Adjudication Manuals and Rulebooks along with the updated NTCA P&P are both available on CompetitionSuite under DOCUMENTS. Please review these documents prior to the start of the season.

MEMBER CERTIFICATION FORM / CODE OF ETHICS

The Membership Certification Form and Code of Ethics Form may be found in the following way:

Go to www.ntca-online.com or www.CompetitionSuite.com

Click on DOCUMENTS on the left side once signed into CompetitionSuite

*The Member Certification Form must have a **principal signature** – don't wait until the last minute!*

Please print/complete the Member Certification Form and the Code of Ethics Form and submit them in one of two ways:

1 – Bring the forms to YOUR first show day and submit the forms at Unit Check In

2 – Scan in your completed forms and email them to Stephanie Bonebrake

(stephaniebonebrake@ntca-online.com) **prior** to your first show

Units must have submitted both of the above documents in order to compete/participate.

ENTRANCE TO SHOWS - (badges & floor crew) *badges will be available starting 1/14/17 at unit check-in. Participating units and instructors will receive wristbands for this contest. Starting 1/14/17, Each unit is provided 4 NTCA badges which will allow the holder entrance to the front sideline of any NTCA show PLUS one (1) permanent video pass per unit to use throughout the season.* Please understand that these badges are intended for directors/staff only. Band Directors, Principals, and Bus Drivers can gain access (free of charge) to the front sideline of any NTCA show by showing his/her school credentials. Your NTCA badges will be available at your first competitive show. Additionally, each unit will receive up to 8 floor crew entries at each contest. These floor crew passes grant entry and floor access to assist units, but seating to view other units is restricted to the performer seating area on the back side. Any additional floor crew will be \$3, student seating front side is \$5 with student ID.

CHECK-IN TIME

Each unit should be checked in by the scheduled check-in time. If you are earlier than this time, the host will be able to accommodate you in most cases with full concessions and a unit staging zone.

SOUND/SHOW MUSIC

Participants should have music clearly marked with unit name and any specific instructions on each CD and/or mp3 player. It is encouraged for all CD's and MP3's to be single track to prevent problems. Please remember to remove your passcode from all iPhone/iPods. Be certain your device is in "airplane mode." All units are encouraged to arrive early for sound check to prevent problems and visit with the sound table technician to ensure that all music media are properly labeled, formatted, and in good working order for playback. No CDRW's are allowed in any show. **Music played from Spotify, Pandora, Dropbox, etc. is prohibited.**

Music will not be accepted in email format this season. All directors must bring your show music with you to each site. Sound checks can be made during scheduled breaks in performance order.

PROPS

All props should be properly taped, padded, and secured. Please comply to any host or circuit request to tape additional edges, surfaces, etc. Any refusal of this request will result in prop not being allowed into the competition area. (This may include equipment as well.) Props are allowed in the prop area up to one hour prior to your performance, and need to be removed from the building immediately following your performance.

VIDEO REGULATIONS

Each unit will receive a video pass at each contest so that a representative from the unit may video the unit's performance. Representatives are allowed to only video the unit that they represent. A box for recording will be set up at each contest. The representative may enter the box one unit prior and must exit one unit following their unit or the unit they represent will be disqualified.

FLOOR CARTS

Floor carts are NOT allowed in the performance gym on this campus.

CRITIQUE

Critique will be available. An email will be sent to unit directors regarding online sign-up procedures.

HORIZONTAL TIMING LINE

FLOOR MEASUREMENTS: 68x100 (PERFORMANCE AREA)

PERFORMANCE GYM -

Entrance/Exit: ENTER BACK LEFT and EXIT FRONT LEFT

Timing Line: **HORIZONTAL TIMING LINE**

68x100 (PERFORMANCE AREA)



(THIS IS THE VIEW FROM THE GE JUDGES AREA/SPECTATOR SIDE)

BODY WARM-UP



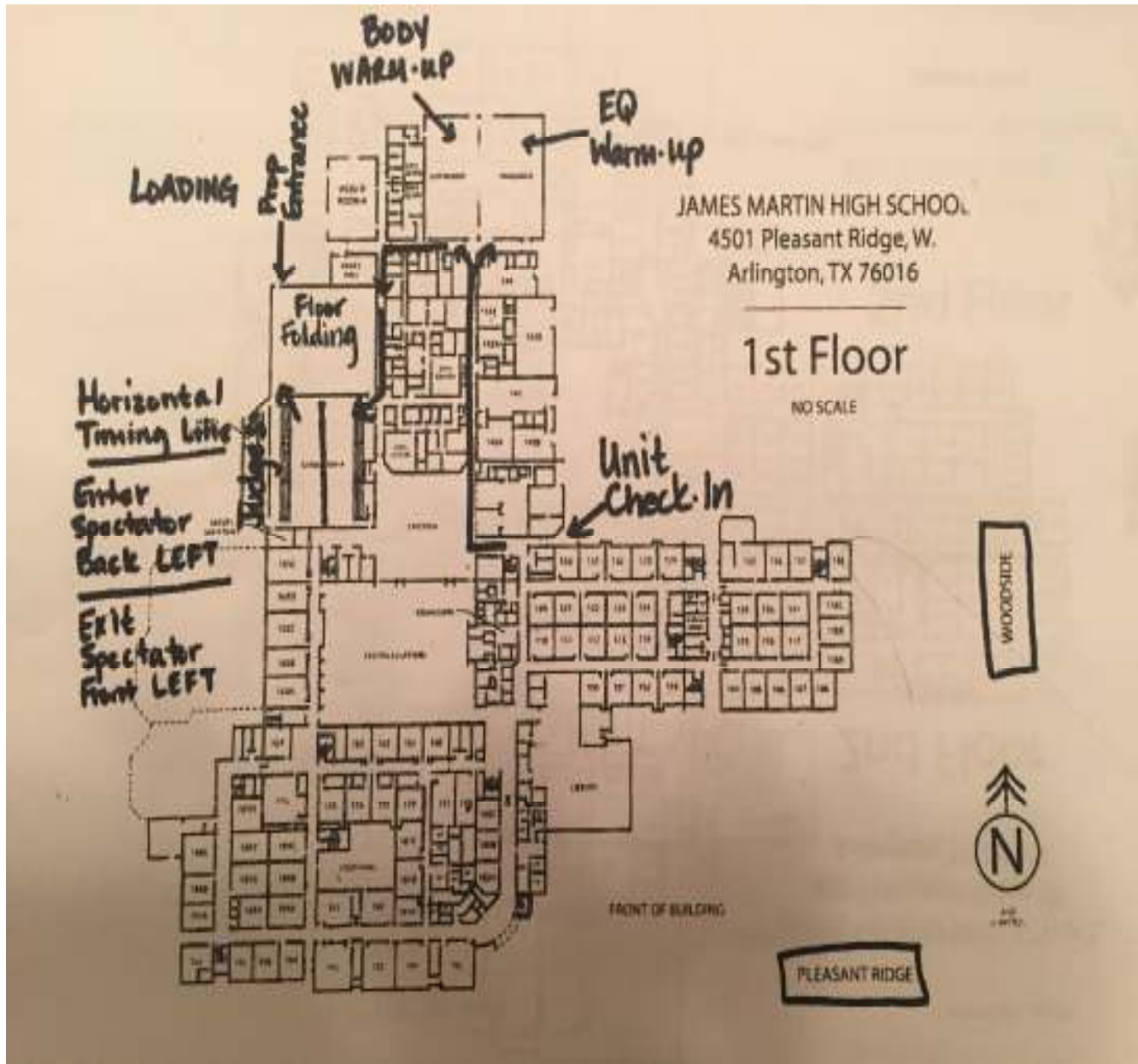
EQUIPMENT WARM-UP



FLOOR FOLDING/PROP STORAGE



INDOOR FACILITY MAP



OUTDOOR FACILITY MAP

